

### COMPONENT 2: ENVIRONMENTAL RESOURCES AND THEIR USE

This component compiles statistics focusing on measuring stocks and changes in stocks of these resources and their use for production and consumption.<sup>1</sup>

<sup>1</sup> based on UN FDES 2013

Statistics on this component are linked to the Sustainable Development Goals (SDGs):



### METALLIC AND NON-METALLIC INVENTORY, 2022

TOTAL GOLD  
RESOURCE AND RESERVE



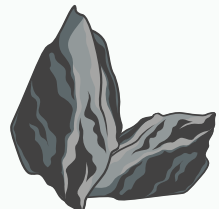
**11.27**  
BILLION  
METRIC TONS

TOTAL COPPER  
RESOURCE AND RESERVE



**14.96**  
BILLION  
METRIC TONS

TOTAL SHALE  
RESOURCE AND RESERVE



**3.25**  
BILLION  
METRIC TONS

TOTAL LIMESTONE  
RESOURCE AND RESERVE



**64.21**  
BILLION  
METRIC TONS

Source: Mines and Geosciences Bureau

### TOTAL FINAL ENERGY CONSUMPTION, 2022

TOTAL FINAL ENERGY CONSUMPTION

**35,858.62 KTOE**



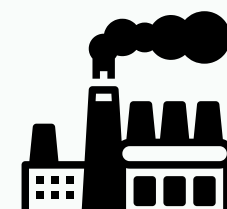
TRANSPORT

34.4%



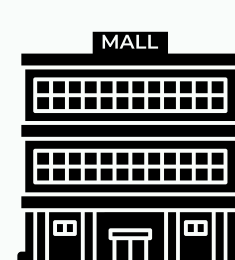
RESIDENTIAL

28.8%



INDUSTRY

19.8%



OTHERS\*

17.1%

Note: Ktoe - Thousand Tons of Oil Equivalent  
Source: Department of Energy

\*COMMERCIAL, AGRI., FISHERY AND FORESTRY, OTHERS, NON-ENERGY USE

### AREA REFORESTED, 2022

Reforestation is the establishment of forest plantations on temporarily unstocked lands that are considered as forest.

**REFORESTED AREA 45,997 HECTARES**

decreased by 51.9% from 95,666 hectares in 2021.

Source: Forest Management Bureau

### LOG PRODUCTION, 2022

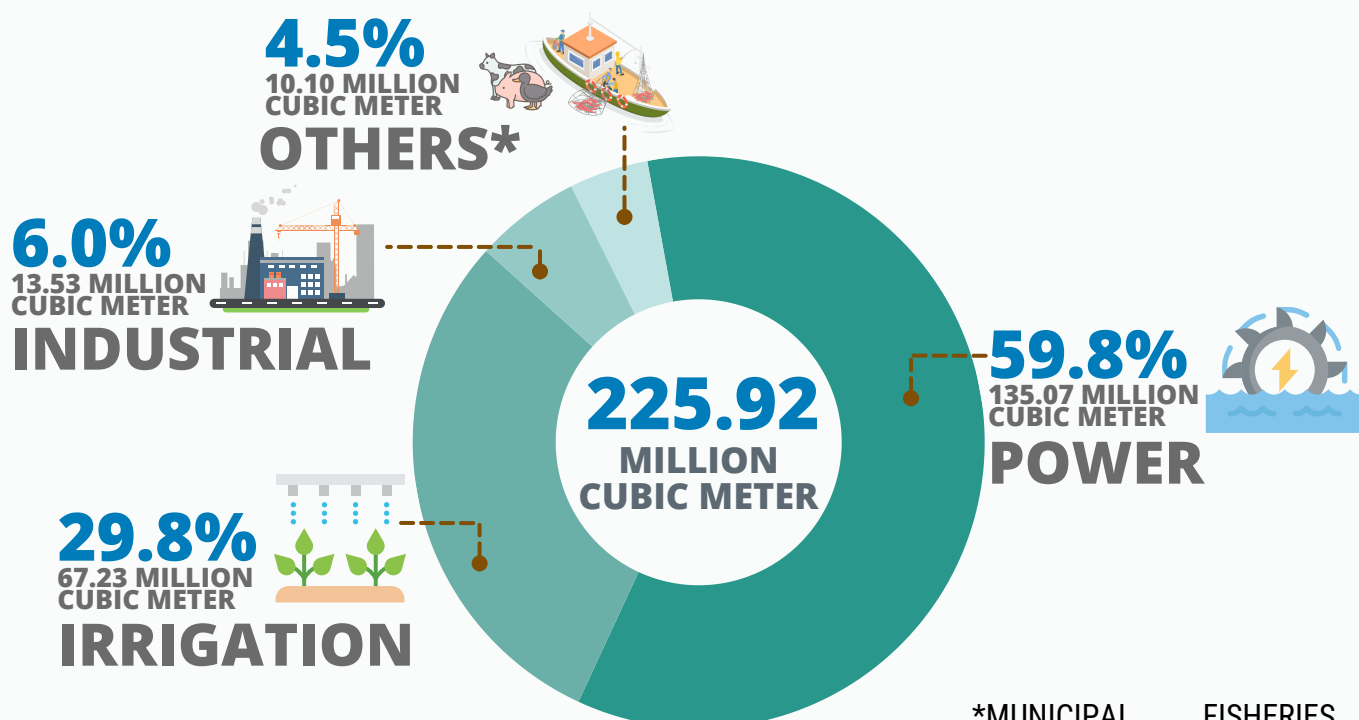
**LOG PRODUCTION**

**797 THOUSAND CUBIC METERS**

decreased by 3.6% from 827 thousand cubic meters in 2021.

Source: Forest Management Bureau

### TOTAL WATER ALLOCATED BY USE, 2022



Source: National Water Resources Board

### NUMBER OF CITES\* IMPORT AND EXPORT PERMITS ISSUED, 2022



**416**  
EXPORT  
PERMITS

**585**  
IMPORT  
PERMITS

\*CONVENTION ON INTERNATIONAL TRADE IN ENDANGERED SPECIES OF WILD FLORA AND FAUNA

Source: Biodiversity Management Bureau

