

COMPONENT 5: HUMAN SETTLEMENTS AND ENVIRONMENTAL HEALTH

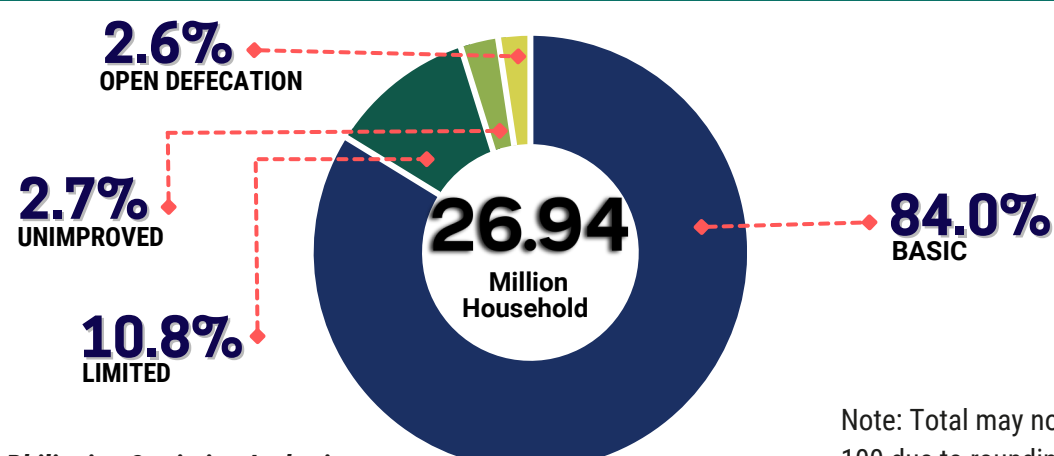
This component compiles statistics on the environment in which humans live and work, particularly with regard to living conditions and environmental health.¹

¹ based on UN FDES 2013

Statistics on this component are linked to the Sustainable Development Goals (SDGs):



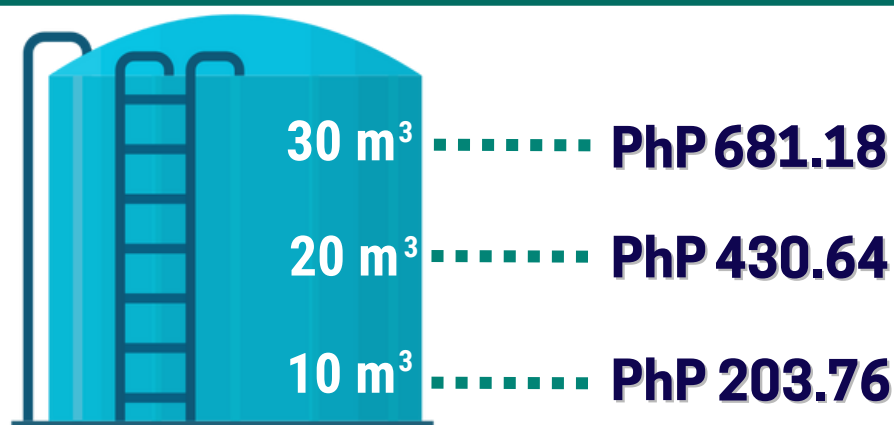
PROPORTION OF HOUSEHOLDS WITH SANITATION FACILITY BY SERVICE LEVEL, 2022



Note: Total may not add up to 100 due to rounding.

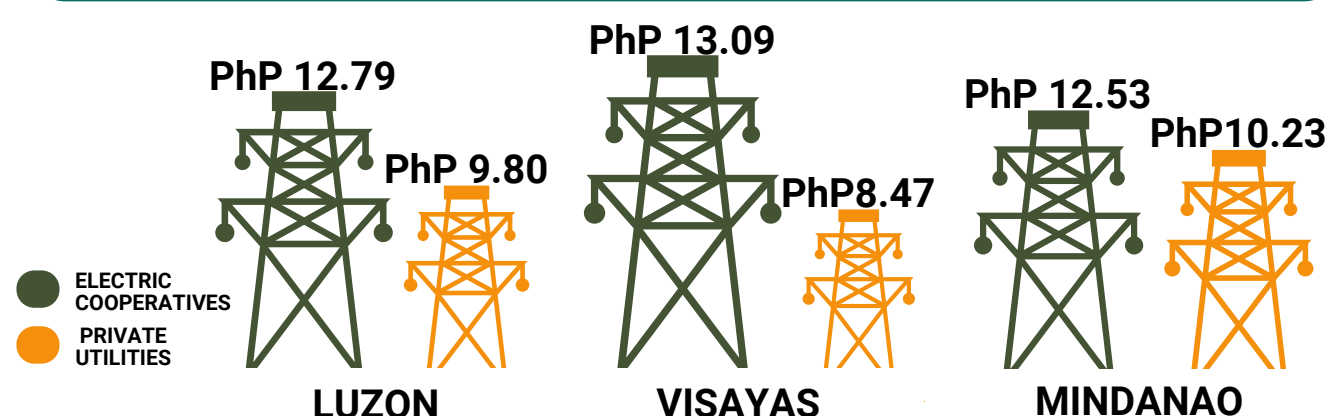
Source: Philippine Statistics Authority

AVERAGE WATER RATES OF WATER DISTRICTS, 2022



Source: Local Water Utilities Administration

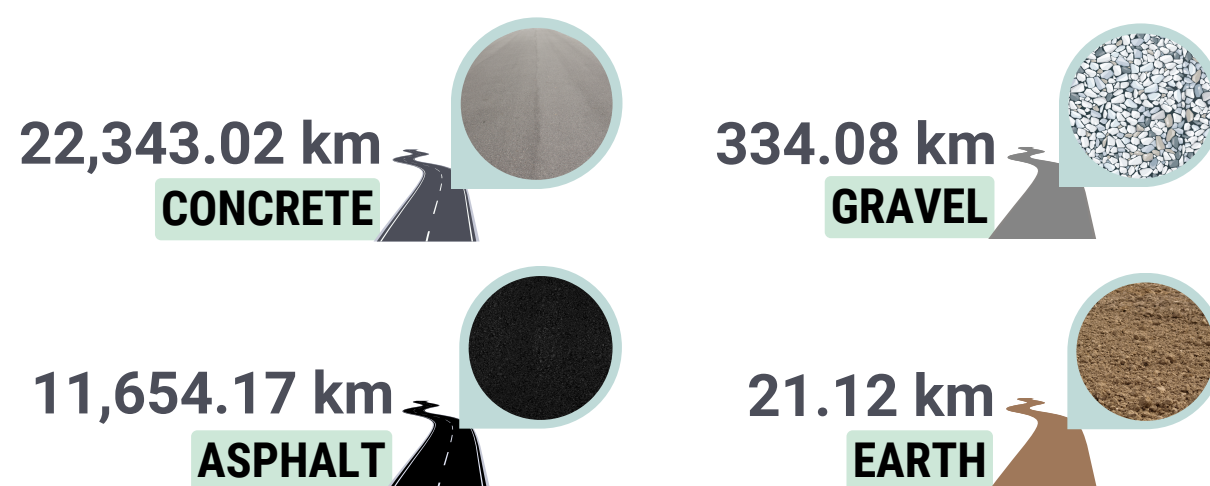
AVERAGE ELECTRICITY RATES BY MAJOR ISLAND GROUP, 2022



Source: Department of Energy

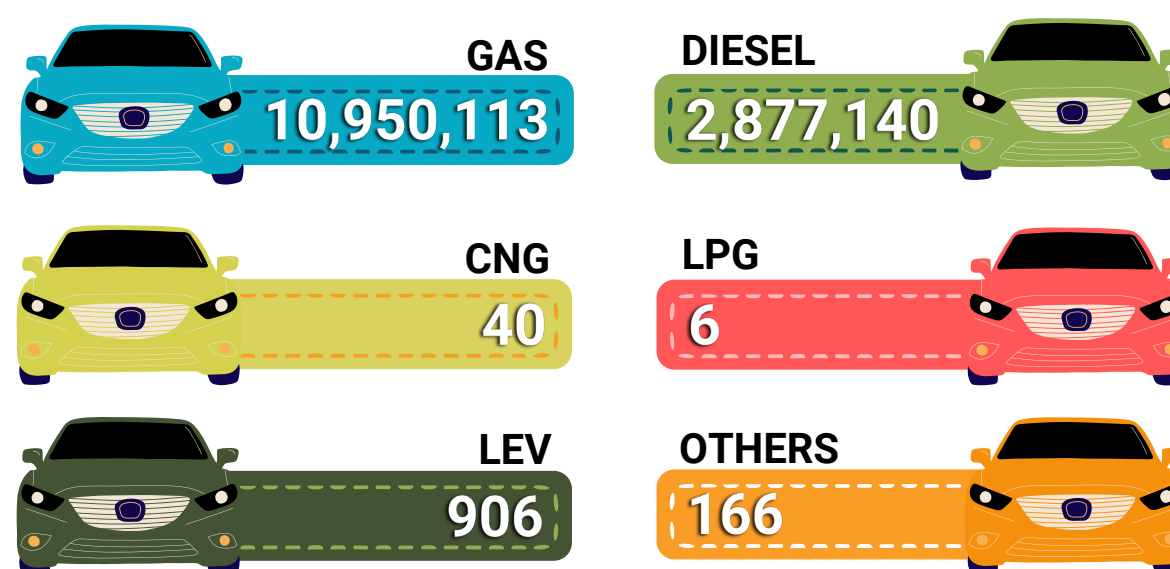
LENGTH OF NATIONAL ROAD BY SURFACE TYPE, 2022

PAVED 33,997.19 km **UNPAVED** 355.21 km



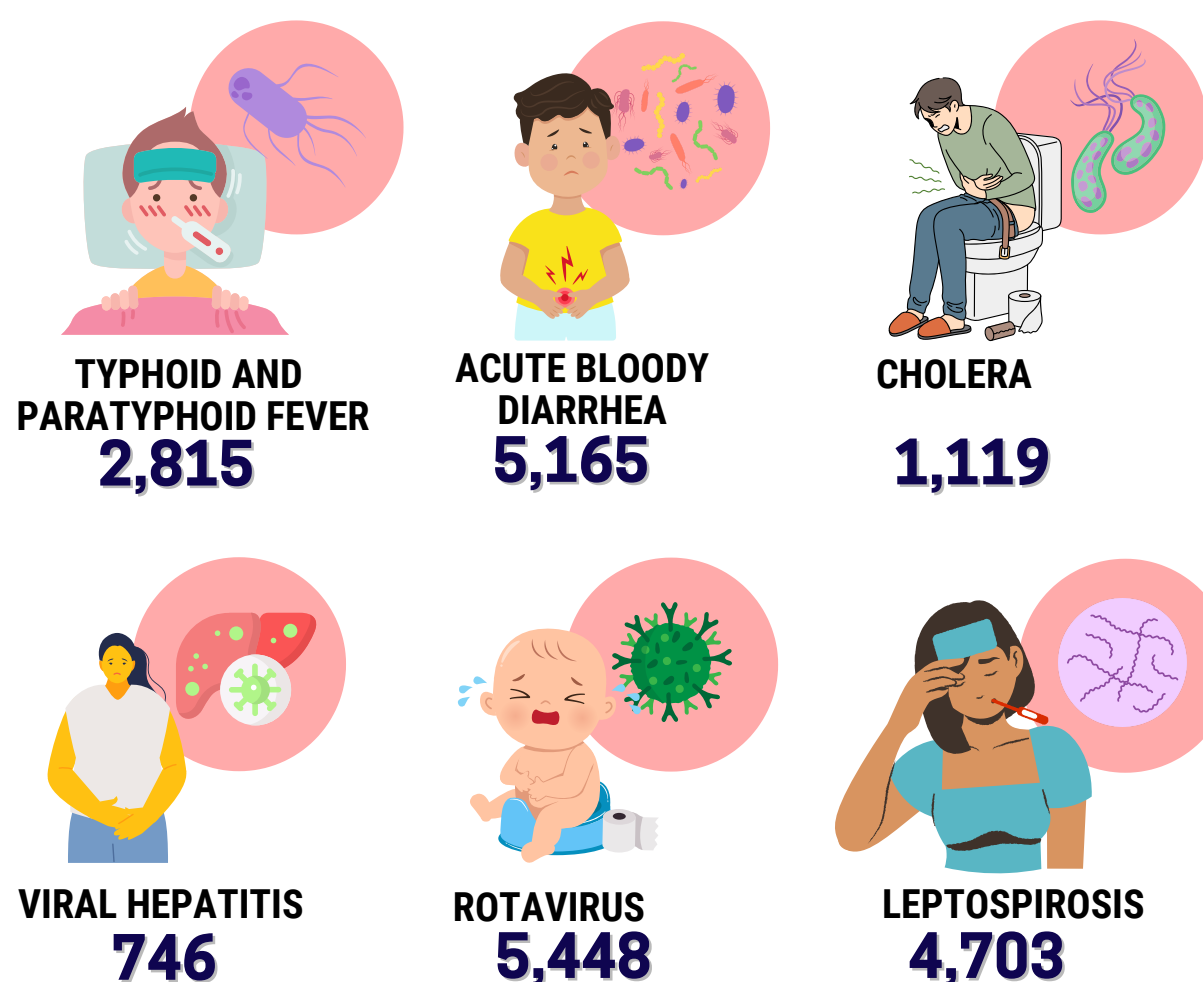
Source: Department of Public Works and Highways

NUMBER OF REGISTERED VEHICLES BY TYPE OF FUEL USED, 2022



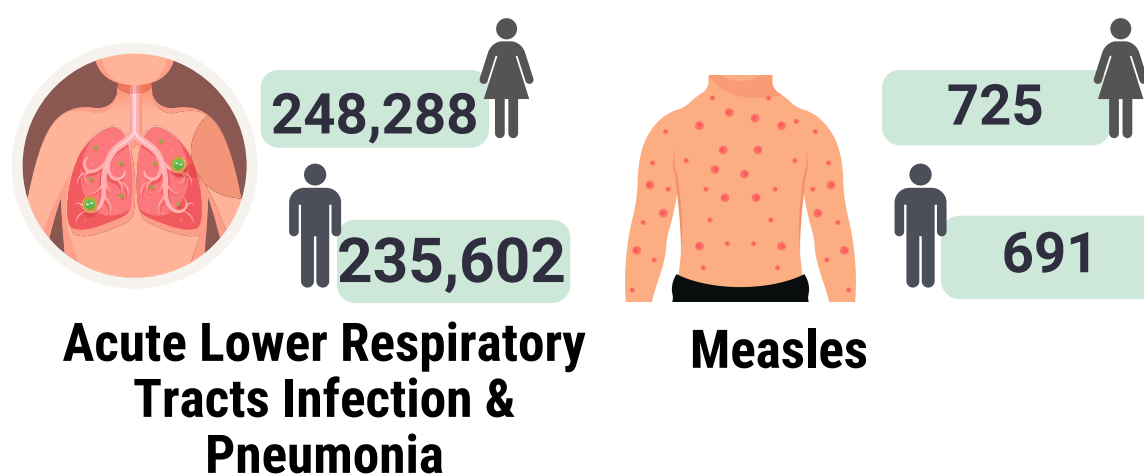
Source: Land Transportation Office

NUMBER OF CASES OF WATER-BORNE DISEASES, 2022



Source: Department of Health

NUMBER OF CASES OF AIRBORNE DISEASES, 2022



NUMBER OF CASES OF VECTOR-BORNE DISEASES, 2022

