

THE WATER ACCOUNTS OF THE PHILIPPINES

provide information on the flows of water between the environment and the economy - from its initial abstraction as input to various economic activities to its return to the environment.

WHAT IS ABSTRACTION?

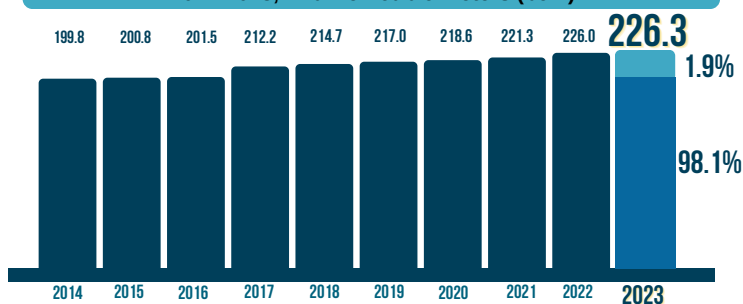
It is the amount of water that is removed from any source, either permanently or temporarily, in a given period of time. It is expressed in volume terms (cubic meters).



In 2023, about **97.7%** is abstracted from **surface water** while **2.3%** is abstracted from **groundwater**.

TOTAL WATER ABSTRACTION

2014-2023, in billion cubic meters (bcm)



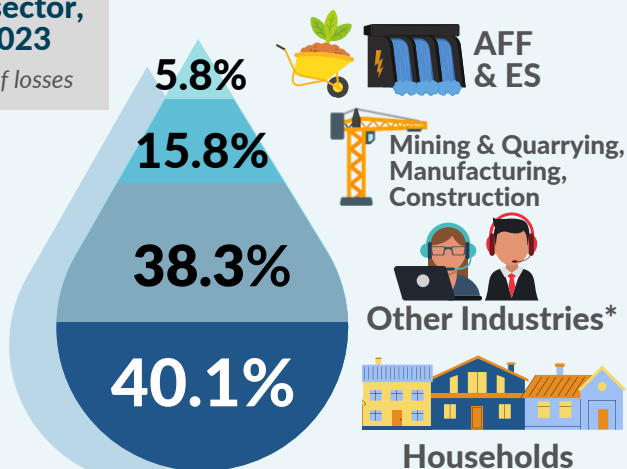
In 2023, the total abstracted water was estimated at **226.30 BILLION CUBIC METERS**. About **1.9%** is abstracted for distribution while **98.1%** is abstracted for own use.

WATER FOR DISTRIBUTION

SHARE
by sector,
2023

Net of losses

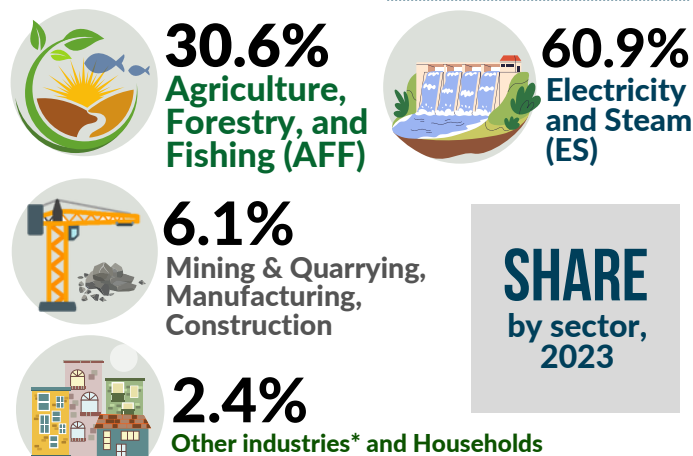
INCREASED to **4.25 bcm** 2023
from 3.72 bcm 2022.



*Includes all Services, Water Supply, and Waste Management

WATER FOR OWN USE

DECREASED to **222.07 bcm** in 2023
from 222.31 in 2022.



*Includes all Services and Waste Management

Source of Basic Data: National Water Resources Board

SDG INDICATORS 6.4.1 AND 6.4.2



WATER USE EFFICIENCY

increased from **PhP 211.05** of GVA per cubic meter of water used in 2022 to **PhP 222.81** per cubic meter in 2023.



LEVEL OF WATER STRESS¹

remains to be **Low** from **27.8%** in 2022 to **27.9%** in 2023.

¹ Based on parameters and criteria of FAO AQUASTAT
Low level of water stress ranges from 25 to 50 percent

Signature