



# LABOR TURNOVER STATISTICS

NATIONAL CAPITAL REGION

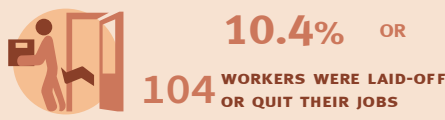
1ST QUARTER 2021

FOR EVERY 1,000 EMPLOYED PERSONS

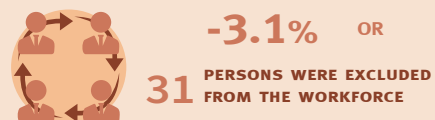
## ACCESSION RATE



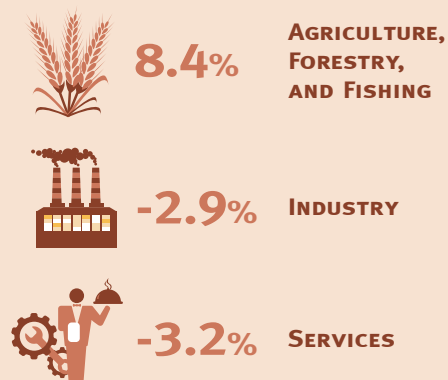
## SEPARATION RATE



## LABOR TURNOVER RATE



### LABOR TURNOVER RATE BY SECTOR

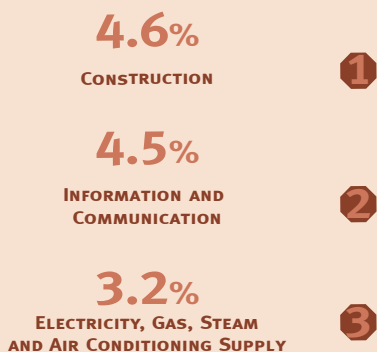


### TOP 3 INDUSTRIES WITH HIGHEST LABOR TURNOVER RATE



### TOP 3 INDUSTRIES WITH HIGHEST ACCESSION RATE BY REASON

#### BUSINESS EXPANSION

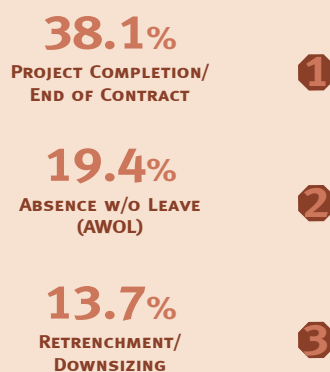


#### REPLACEMENT



### TOP 3 REASONS FOR SEPARATION OF WORKERS

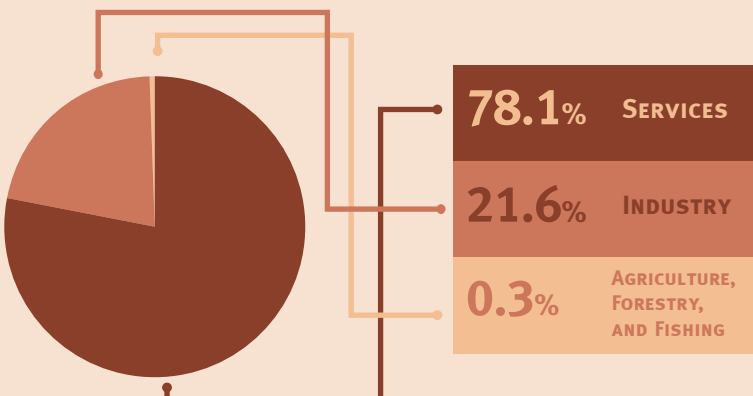
#### EMPLOYER-INITIATED



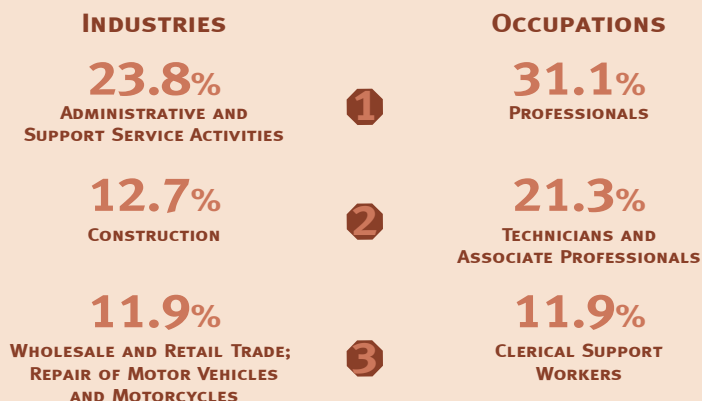
#### EMPLOYEE-INITIATED



### PERCENT DISTRIBUTION OF JOB VACANCIES IN ESTABLISHMENTS BY SECTOR



### TOP 3 INDUSTRIES AND MAJOR OCCUPATIONS IN TERMS OF SHARE TO TOTAL JOB VACANCIES



Source: Labor Turnover Survey, Philippine Statistics Authority.

