

OCCUPATIONAL SAFETY AND HEALTH PRACTICES: 2019



Top 5 Preventive and Control Measures Activities Conducted

89.7%

1



Posted safety signages or warnings

83.9%

2



Disseminated information material on safety and health

83.2%

3



Regularly inspected and conducted maintenance of equipment, mechanical and electrical facilities

82.4%

4



Conducted emergency response preparedness activities for earthquake, fire, chemical spills, etc.

82.0%

5



Organized safety and health committee

Top 5 Occupational Safety & Health Policies/Programs

1



Policy on Smoke-Free Workplace

85.3%

2



Fire Prevention and Control Program

83.6%

3



Policy and Program on Anti-Sexual Harassment

77.7%

4



Emergency Preparedness and Response Program

74.0%

5



Work Accident Prevention Program

72.3%

98.6%

Establishments Conducted Preventive Control and Measures

95.8%

Establishments Implemented Occupational Safety and Health Policies and Programs

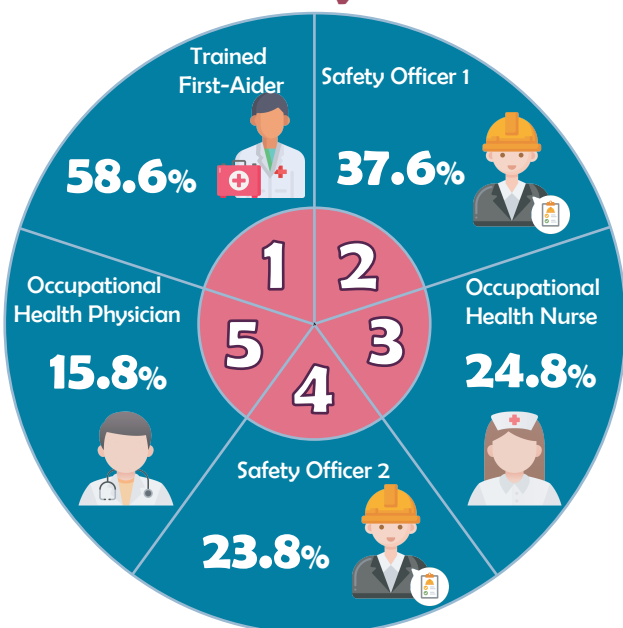
85.8%

Establishments Availed OSH-Related Trainings and Seminars

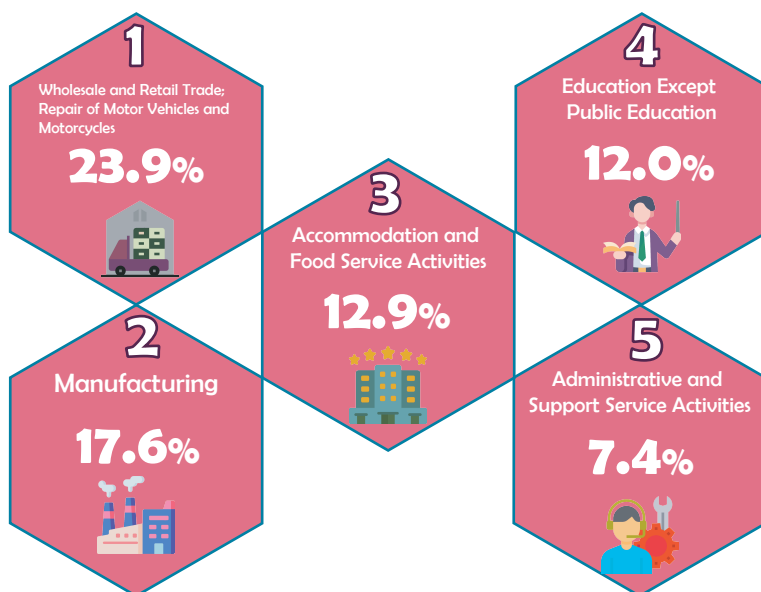
81.7%

Establishments with Designated Safety and Health Personnel

Top 5 Designated Health and Safety Personnel



Top 5 Industries with Designated Health and Safety Personnel



Safety Officer 1 - refers to an employee who has completed the mandatory eight (8)-hour OSH orientation course as prescribed in the OSH Standards and two (2)-hour trainers' training.

Safety Officer 2 - refers to an employee who has completed the mandatory forty (40)-hour OSH training course applicable to the industry as prescribed in the OSH Standards.



For Technical Inquiries
edsd.staff@psa.gov.ph
lsrsd.staff@psa.gov.ph



Visit us at
<https://psa.gov.ph>



Follow us on Twitter
@PSAgovph



Like us on Facebook
/PSAgovph



Management System
ISO 9001:2015
www.tuv.com
ID 9108640991

