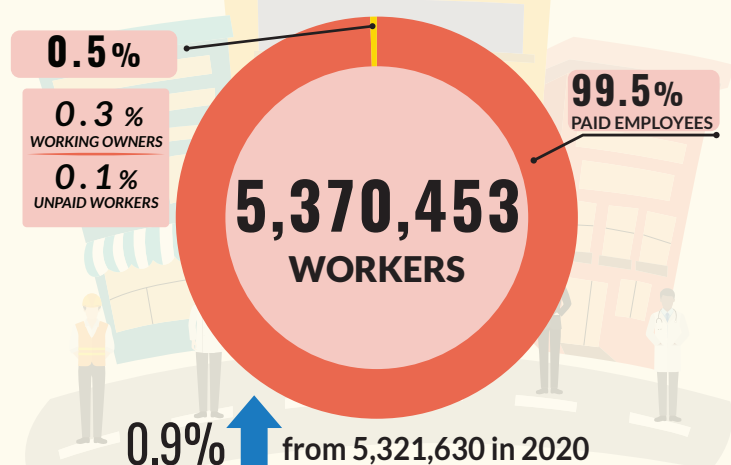
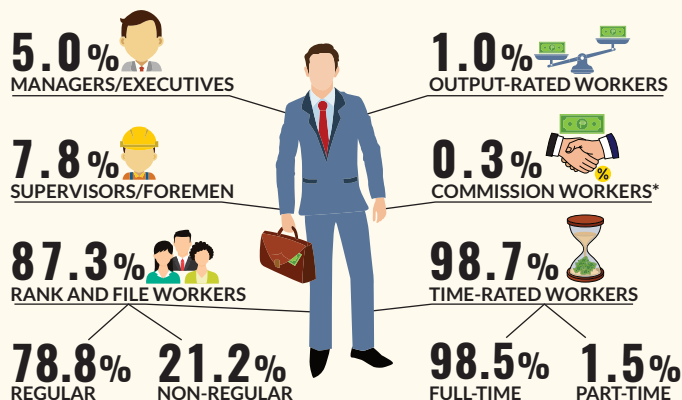


TOTAL EMPLOYMENT



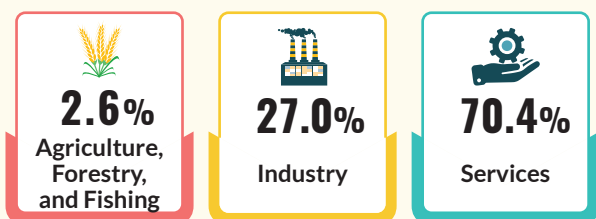
PAID EMPLOYEES

5,346,253

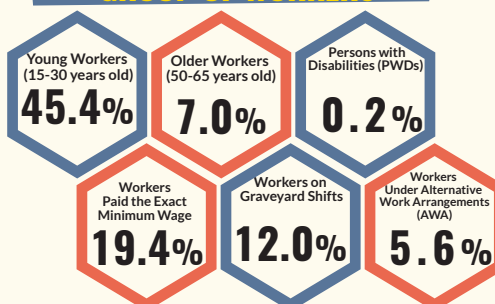


*Purely paid on Commission With Employer Control and Supervision

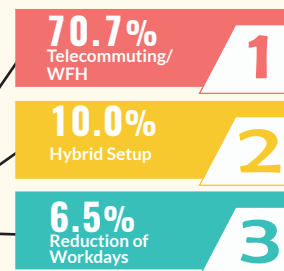
EMPLOYMENT BY SECTOR



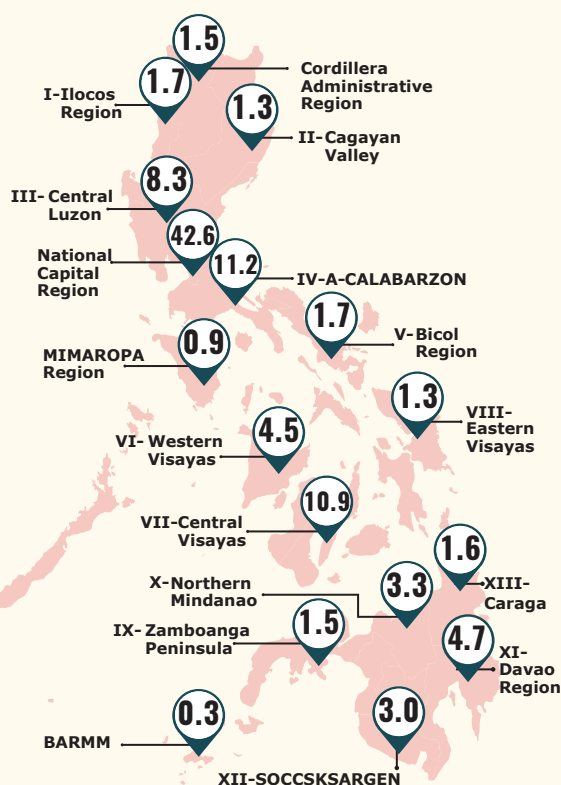
EMPLOYMENT OF SPECIFIC GROUP OF WORKERS



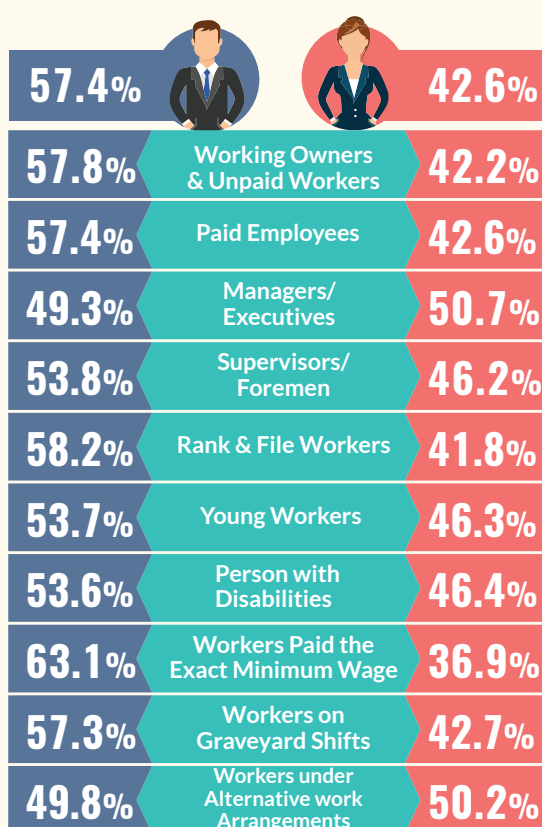
TOP 3 MODES OF ALTERNATIVE WORK ARRANGEMENTS (AWA)



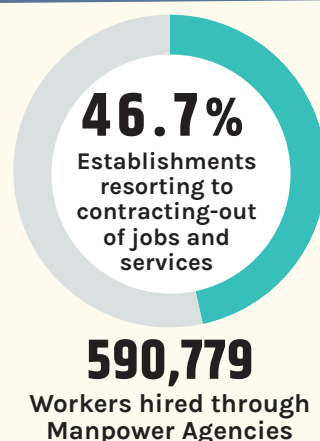
EMPLOYMENT BY REGION (In Percent)



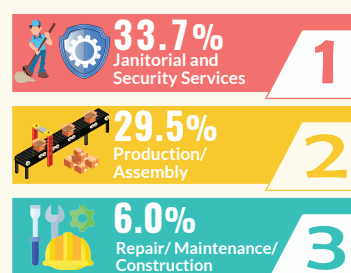
EMPLOYMENT BY SEX



AGENCY-HIRED WORKERS



TOP 3 PROCESSES CONTRACTED OUT



Note: Details may not add up to totals due to rounding.