



LABSTAT

Updates

Department of Labor and Employment
Manila, Philippines

Vol. 11 No. 38

December 2007

WAGE RATES OF PRODUCTION SUPERVISORS AND GENERAL FOREMEN, QUALITY INSPECTORS AND PRODUCTION CLERKS IN MANUFACTURING (15th of an 18-Part Series on 2006 OWS)

This issue of the LABSTAT Updates on the results of the 2006 Occupational Wages Survey (OWS) focuses on the wage rates of three occupations in selected industry groups of manufacturing. These are production supervisors and general foremen, monitored in 20 industry groups, and quality inspectors and production clerks which are monitored in 14 industry groups.

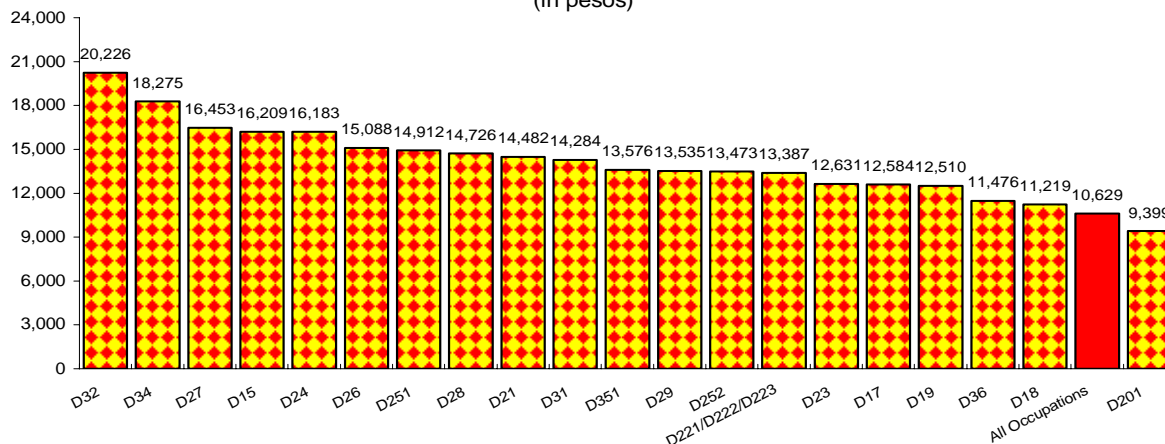
The wage rates of 169 occupations across 45 industry groups were covered in the OWS. These are posted on the BLES website.

Almost all production supervisors and general foremen had higher average wage rates than the all-occupation average

In August 2006, among production supervisors and general foremen in manufacturing, those in the manufacture of radio, television and communication equipment and apparatus received the highest average monthly wage rate at ₱20,226. The wage rate of similar workers in the manufacture of motor vehicles, trailers and semi-trailers placed second at ₱18,275. Those of the other 18 covered sub-industries ranged from ₱9,399 to ₱16,453. (Figure 1)

Noteworthy, except for production supervisors and general foremen in the manufacture of wood and wood products except furniture, the average monthly wage rates of the occupation in all industry groups monitored in manufacturing were greater than the all-occupation average of ₱10,629.

FIGURE 1 - Average Monthly Wage Rates of Production Supervisors and General Foremen in Manufacturing, Philippines: August 2006
(in pesos)



- | | | |
|---|--|---|
| D15 - Food Products and Beverages | D221/D222/D223 - Publishing and Printing except Reproduction of Recorded Media | D28 - Fabricated Metal Products, except Machinery and Equipment |
| D17 - Textiles | D23 - Coke, Refined Petroleum and Other Fuel Products | D29 - Machinery and Equipment, n.e.c. |
| D18 - Wearing Apparel | D24 - Chemicals and Chemical Products | D31 - Electrical Machinery and Apparatus, n.e.c. |
| D19 - Tanning and Dressing of Leather; Luggage, Handbags and Footwear | D251 - Rubber Products | D32 - Radio, Television and Communication Equipment and Apparatus |
| D201 - Wood and Wood Products except Furniture | D252 - Plastic Products | D34 - Motor Vehicles, Trailers and Semi-Trailers |
| D21 - Paper and Paper Products | D26 - Other Non-Metallic Mineral Products | D351 - Building and Repairing of Ships and Boats |
| | D27 - Basic Metals | D36 - Repair of Furniture |

Source of data: Bureau of Labor and Employment Statistics, Occupational Wages Survey.

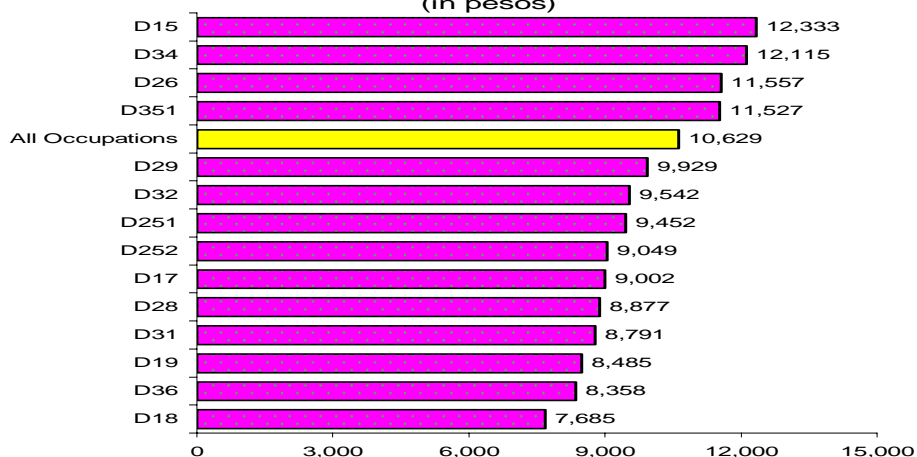
Highest wage rates among quality inspectors in the manufacture of food and beverages; and manufacture of motor vehicles, trailers and semi-trailers

Among the quality inspectors in 14 manufacturing industry groups covered by the 2006 OWS, those in the manufacture of food products and beverages, and manufacture of motor vehicles, trailers and semi-trailers were paid the highest average wage rates at ₱12,333 and ₱12,115, respectively. Relatively high wage rates were also posted in the manufacture of other non-metallic mineral products (₱11,557) and building and repairing of ships and boats (₱11,527). These were the

only divisions of manufacturing industry groups monitored with monthly wage rates of quality inspectors greater than the average for all the occupations covered by the survey. (Figure 2)

Wage rates of other sub-industries with similar occupation varied from ₱7,685 to ₱9,929.

FIGURE 2 - Average Monthly Wage Rates of Quality Inspectors in Manufacturing, Philippines: August 2006 (in pesos)



- | | | |
|---|---|---|
| D15 - Food Products and Beverages | D252 - Plastic Products | D32 - Radio, Television and Communication Equipment and Apparatus |
| D17 - Textiles | D26 - Other Non-Metallic Mineral Products | D34 - Motor Vehicles, Trailers and Semi-Trailers |
| D18 - Wearing Apparel | D28 - Fabricated Metal Products, except Machinery and Equipment | D351 - Building and Repairing of Ships and Boats |
| D19 - Tanning and Dressing of Leather; Luggage, Handbags and Footwear | D29 - Machinery and Equipment, n.e.c. | D36 - Repair of Furniture |
| D251 - Rubber Products | D31 - Electrical Machinery and Apparatus, n.e.c. | |

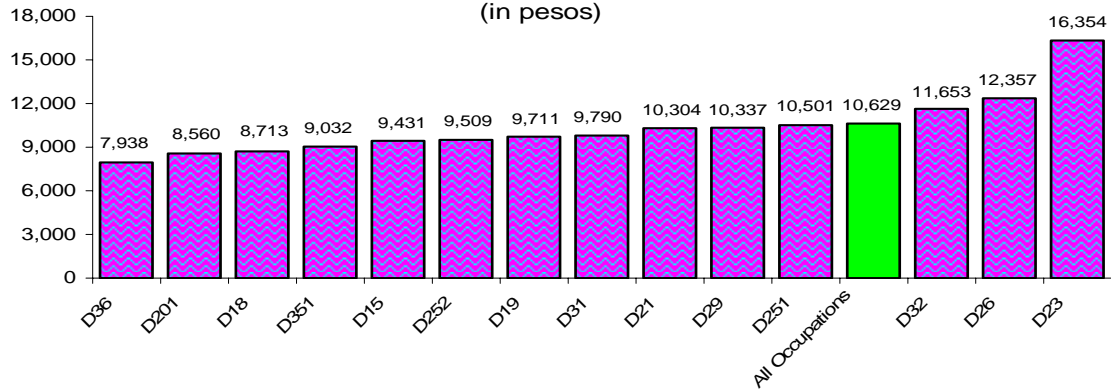
Source of data: Bureau of Labor and Employment Statistics, Occupational Wages Survey.

Average wage rate of production clerks highest in the manufacture of coke, refined petroleum and other fuel products; the lowest in the manufacture and repair of furniture

Wage rates of production clerks were also monitored in 14 sub-industries of manufacturing. Production clerks in the manufacture of coke, refined petroleum and other fuel products recorded the highest average wage rate at ₱16,354. This sub-industry and two others (e.g. manufacture of other non-metallic mineral products; and manufacture of radio, television and

communication equipment and apparatus) recorded higher average wage rates than the all occupation average wage rate at ₱10,629. Minimal differences in wage rates were observed for the rest of the sub-industries. The manufacture and repair of furniture at ₱7,938 recorded the lowest wage rate. (Figure 3)

FIGURE 3 - Average Monthly Wage Rates of Production Clerks in Manufacturing, Philippines: August 2006
(in pesos)



D15 - Food Products and Beverages	D21 - Paper and Paper Products	D29 - Machinery and Equipment, n.e.c.
D18 - Wearing Apparel	D23 - Manufacture of Coke, Refined Petroleum and Other Fuel Products	D31 - Electrical Machinery and Apparatus, n.e.c.
D19 - Tanning and Dressing of Leather; Luggage, Handbags and Footwear	D251 - Rubber Products	D32 - Radio, Television and Communication Equipment and Apparatus
D201 - Wood and Wood Products except Furniture	D252 - Plastic Products	D351 - Building and Repairing of Ships and Boats
D26 - Other Non-Metallic Mineral Products	D36 - Repair of Furniture	

Source of data: Bureau of Labor and Employment Statistics, Occupational Wages Survey.

Definition of Terms:

- o **Wage rate** refers to the sum of basic pay and regular/guaranteed cash allowances.
- o **Basic pay** refers to pay for normal/regular working time before deductions for employees' social security contributions and withholding taxes. It excludes overtime, night shift differential and other premium pay; commissions, tips and share of employees in service charge; and payment in kind.
- o **Allowances** refer to regular/guaranteed cash payments. These include cost of living allowance but exclude reimbursements for travel, entertainment, meals and other expenses, etc. incurred in conducting the business of the employer; cost of uniform/working clothes; bonuses and gratuities; family allowances.

FOR INQUIRIES:

Regarding this report contact **LABOR STANDARDS STATISTICS DIVISION** at 527-3000 loc 311/527-9325
 Regarding other statistics and technical services contact **BLES Databank** at 527-3000 loc 317
 Or write to BLES c/o Databank, 3/F DOLE Bldg. Gen. Luna St., Intramuros, Manila 1002
 FAX 527-9325 E-mail: bles_dole@yahoo.com Website: <http://www.bles.dole.gov.ph>