

## Wage and Salary Workers Employed in Private Establishments

*(Fourth of a five-part series)*

Class of worker or status in employment categorizes the total employed as a) wage and salary worker, b) employer in own family-operated farm or business, c) self-employed without any paid employee and d) unpaid family worker in own family-operated farm or business. The generally prevalent wage and salary workers comprise those employees working in private household for pay, private establishment, government/government corporation and those working in own family-operated farm or business and receives remuneration in any kind in the performance of their specific tasks.

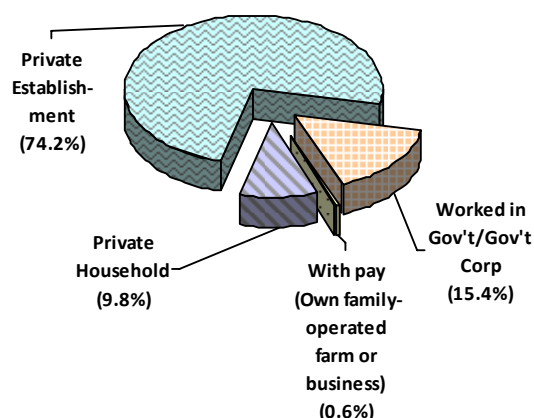
This issue of LABSTAT Updates provides a summary of the demographic and economic characteristics of wage and salary workers employed in private establishments in 2010. The data refer to the averages of the four survey rounds (January, April, July, October) of the Labor Force Survey (LFS) conducted by the National Statistics Office. As used in the survey, these employees in private establishments are those who worked for pay, in cash or in kind. They are not only persons working for private industry but also include those working for religious group (priests, acolytes), missionaries (nuns, sisters), unions, and non-profit organizations.

In 2010, wage and salary workers employed in private establishments constitute 40.4% of the total employed (14.565 million vs. 36.035 million).

### Demographic Characteristics (Table 1)

- Employed workforce in private establishments represented the largest share of 74.2% (14.565 million vs. 19.626 million) among all types of wage and salary workers in 2010. (Figure 1)
- Seven (7) out of 10 (70.6% or 10.282 million) employees in private establishments were men.
- Around 68.9% (10.036 million) of workers in private establishments were between 25-54 years old. (Figure 2)

**FIGURE 1 - Percent Distribution of Wage and Salary Workers by Type, Philippines: 2010**



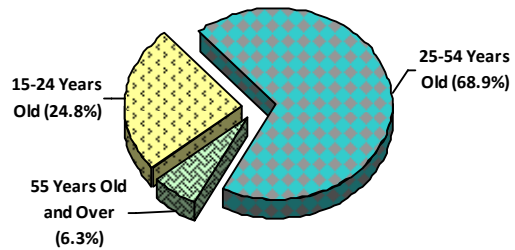
**Demographic Characteristics** (Cont'd)

- Almost three-fifths of these private employees (57.9% or 8.426 million) were married.
- Majority of them were not head of their respective households (61.7% or 8.988 million).
- Two out of every 5 workers had secondary (42.4%) education. (Figure 3)

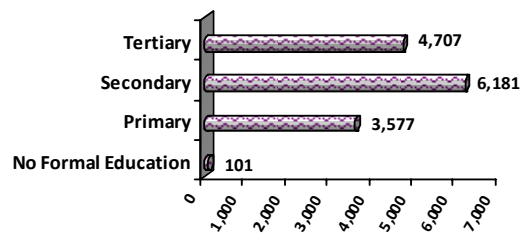
**Economic Characteristics** (Table 2)

- Relatively high proportions of workers in private establishments were located in the National Capital Region (17.7% or 2.575 million), Region IV-A (15.4% or 2.249 million) and Region III (13.3% or 1.938 million). On the other hand, the lowest share was noted in Autonomous Region in Muslim Mindanao with 0.6% (81,000). (Figure 4)
- Seven out of 10 employees (70.0% of 14.565 million) were permanently employed.
- More than three-fourths (77.8% or 11.337 million) rendered full time work (40 hours and more per week).
- Almost half were employed in the services sector (6.976 million or 47.9%). (Figure 5)
- Laborers and unskilled workers accounted for the biggest share of 36.1% (5.260 million) across occupation groups.
- Workers in private establishments received an average daily basic pay of ₱294.19.
- Weekly hours worked among these workers averaged to 44.5.

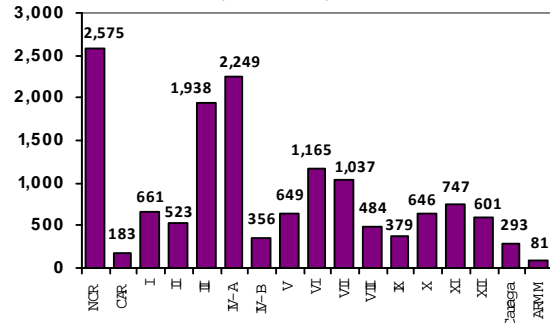
**FIGURE 2 - Percent Distribution of Wage and Salary Workers Employed in Private Establishments by Age Group, Philippines: 2010**



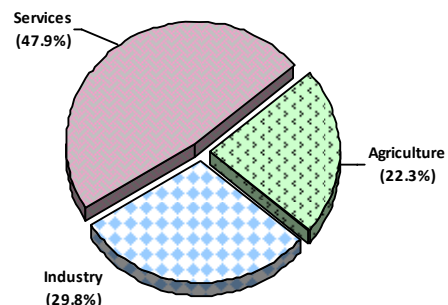
**FIGURE 3 - Wage and Salary Workers Employed in Private Establishments by Educational Attainment, Philippines: 2010 (In Thousands)**



**FIGURE 4 - Wage and Salary Workers Employed in Private Establishments by Region, Philippines: 2010 (In Thousands)**



**FIGURE 5 - Percent Distribution of Wage and Salary Workers Employed in Private Establishments by Sector, Philippines: 2010**



**FOR INQUIRIES:**

Regarding this report contact the TECHNICAL SERVICES DIVISION at 527-3000 loc 317  
 Regarding other statistics and technical services contact the BLES Databank at 527-9311 (Telefax)  
 Or write to BLES c/o Databank, 3/F DOLE Bldg., Gen. Luna St., Intramuros, Manila 1002  
 Fax: 527-5506 E-mail: bles\_tsd@yahoo.com Website: <http://www.bles.dole.gov.ph>

**TABLE 1 - Demographic Characteristics of Wage and Salary Workers  
Employed in Private Establishments, Philippines: 2010**  
(In Thousands Except Percent)

INDICATOR	Number	Percent Share
<b>TOTAL</b>	<b>14,565</b>	<b>100.0</b>
<b>Sex</b>		
Men	10,282	70.6
Women	4,283	29.4
<b>Age</b>		
15 – 24 Years Old	3,613	24.8
25 – 54 Years Old	10,036	68.9
55 Years Old and Over	916	6.3
<b>Marital Status</b>		
Single	5,518	37.9
Married	8,426	57.9
Others	621	4.3
<b>Relationship to Household Head</b>		
Head of Household	5,577	38.3
Non-head	8,988	61.7
<b>Educational Attainment</b>		
No Formal Education	101	0.7
Primary	3,577	24.6
Secondary	6,181	42.4
Tertiary	4,707	32.3
<i>Undergraduate</i>	<i>2,246</i>	<i>15.4</i>
<i>Graduate</i>	<i>2,461</i>	<i>16.9</i>

Note: Details may not add up to totals due to rounding.  
Source of basic data: National Statistics Office, Labor Force Survey, Public Use Files.

**TABLE 2 - Economic Characteristics of Wage and Salary Workers  
Employed in Private Establishments, Philippines: 2010**  
(In Thousands Except Percent)

INDICATOR	Number	Percent Share
<b>TOTAL</b>	<b>14,565</b>	<b>100.0</b>
<b>Nature of Employment</b>		
Permanent Job	10,192	70.0
Short Term	3,707	25.5
Different Employer	667	4.6
<b>Full/Part-Time Employment</b>		
Worked Less Than 40 Hours	3,080	21.1
Worked 40 Hours and Over	11,337	77.8
With a Job, Not at Work	148	1.0
<b>Sector</b>		
Agriculture	3,243	22.3
Industry	4,346	29.8
Services	6,976	47.9
<b>Major Occupation</b>		
Special-Interest Organizations, Corporate Executives, Managers, Managing Proprietors and Supervisors	484	3.3
Service Workers, and Shop and Market Sales Workers	2,202	15.1
Farmers, Forestry Workers and Fishermen	216	1.5
Plant and Machine Operators and Assemblers	1,560	10.7
Laborers and Unskilled Workers	5,260	36.1
Others	4,842	33.2
<b>Average Daily Basic Pay (Php)</b>	<b>294.19</b>	-
<b>Mean Hours of Work per Week</b>	<b>44.5</b>	-

Note: Details may not add up to totals due to rounding.  
Source of basic data: National Statistics Office, Labor Force Survey, Public Use Files.