

## THE EMPLOYEES' COMPENSATION PROGRAM (ECP)

### ... Employers' Awareness

(First of a series)

This LABSTAT Updates presents statistical briefs on the Employee's Compensation Commission (ECC) and the Employees' Compensation Program (ECP). The ECP provides a package of benefits and services for public and private sector employees and their dependents in the event of work-connected contingencies such as sickness, injury, disability or death. It is implemented by the ECC, a quasi-judicial corporate entity attached to the Department of Labor and Employment (DOLE) for policy coordination and guidance.

The statistics were based on the results of the 2011/2012 BLES Integrated Survey (BITS) conducted in 2012 by the Bureau of Labor and Employment Statistics (BLES) in coordination with the DOLE Regional Offices.

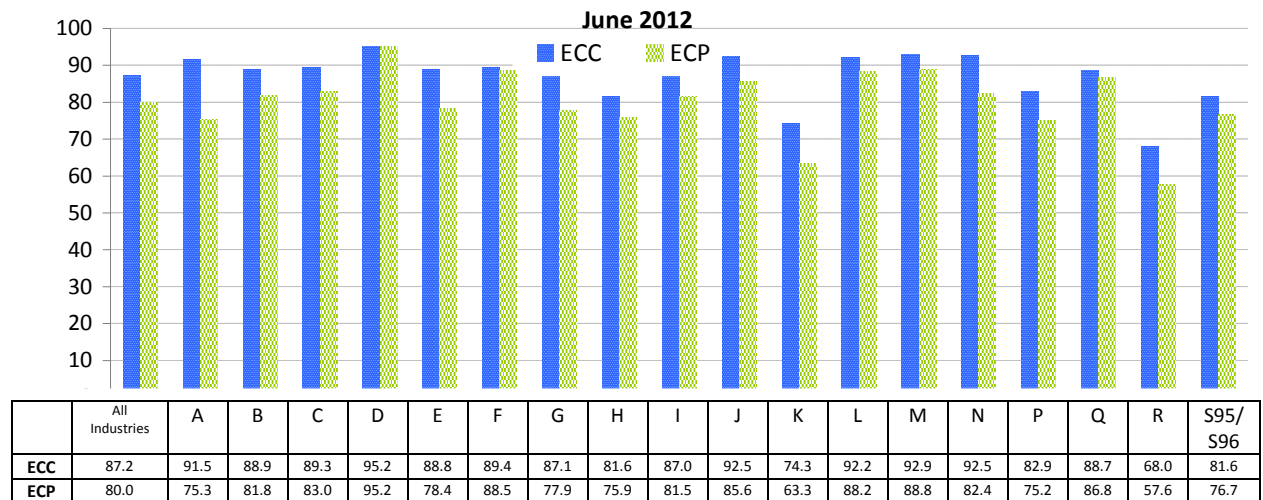
The BITS is a nationwide survey covering 7,061 establishments with 20 or more workers in 69 industry groups. It also generates statistics on employment of specific groups of workers; occupational shortages and surpluses; training of workers; recruitment and hiring practices for entry-level jobs; occupational safety and health practices; and occupational injuries and diseases that can be used as basis for policy and program formulation and evaluation.

Specifically, this issue describes the level of awareness of establishments on the ECC and ECP. It also presents statistics on the type of information about ECP learned by the establishments, the mode it was learned, and the modes by which the establishments disseminate information on ECP to their employees. The metadata and statistical tables of the survey are posted at the BLES website.

### **Awareness of ECC and ECP highest in Electricity, Gas, Steam and Air Conditioning Supply**

- Out of the total 26,253 establishments employing 20 or more workers in 2012 about 87% (22,901) were aware of the existence of the Employees' Compensation Commission (ECC). (Figure 1)
- Awareness of ECC was highest in electricity, gas, steam and air conditioning supply at 95.2%, followed by professional, scientific and technical activities at 92.9%.
- Awareness was lowest in arts and entertainment and recreation at 68.0%.
- Meanwhile, four out of five establishments or 80.0% (20,998) were aware of the Employees' Compensation Program (ECP).
- Similarly, very high proportion of establishments in electricity, gas, steam and air conditioning supply (95.2%) reported awareness on ECP, while only 57.6% in arts, entertainment and recreation reported the same.

**FIGURE 1 - Percentage Distribution of Establishments With 20 or More Workers Aware of ECC and ECP by Major Industry Group, Philippines:**



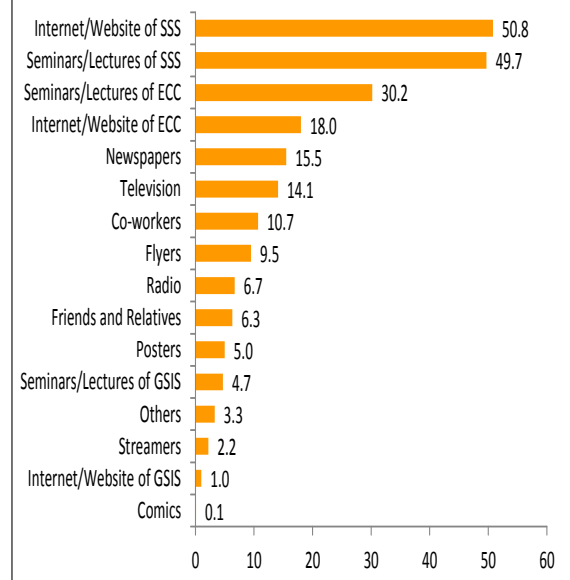
A – Agriculture, Forestry and Fishing  
 B – Mining and Quarrying  
 C – Manufacturing  
 D – Electricity, Gas, Steam and Air Conditioning Supply  
 E – Water Supply; Sewerage, Waste Management and Remediation Activities  
 F – Construction  
 G – Wholesale and Retail Trade; Repair of Motor Vehicles and Motorcycles  
 H – Transportation and Storage  
 I – Accommodation and Food Service Activities  
 J – Information and Communication  
 K – Financial and Insurance Activities  
 L – Real Estate Activities  
 M – Professional, Scientific and Technical Activities  
 N – Administrative and Support Service Activities  
 P – Education except Public Education  
 Q – Human Health and Social Work Activities except Public Health Activities  
 R – Arts, Entertainment and Recreation  
 S95/S96 – Repair of Computers and Personal and Household Goods; Other Personal Service Activities

Source of data: Bureau of Labor and Employment Statistics, 2011/2012 BLES Integrated Survey.

**Internet/website and seminars/lectures of SSS the most common sources of information about ECP**

- The internet/website of SSS (50.8%) and its seminars/lectures (49.7%) were the most common sources of information about ECP. (Figure 2)
- Seminars/lectures of ECC ranked third at 30.2%.
- Less than 20.0% of establishments derived information on ECP from internet/website of ECC (18.0%), newspapers (15.5%), television (14.1%), co-workers (10.7%), with the lowest at 0.1% on comics.

**FIGURE 2- Percentage Distribution of Establishments With 20 or More Workers Aware of ECP by Mode of Learning about ECP, Philippines: June 2012**



Note: Details will not add up to 100% due to multiple responses.  
 Source of data: Bureau of Labor and Employment Statistics, 2011/2012 BLES Integrated Survey.

### **Cash income benefits for sickness, disability or death; and medical benefits/services - the most common ECP benefits learned by establishments**

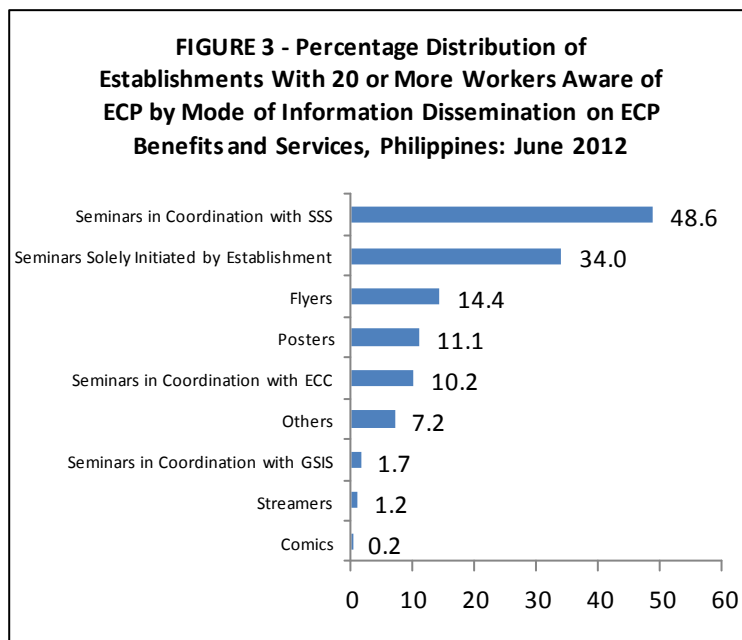
- Most of the benefits learned by the establishments from the various modes pertained to cash income benefits for sickness, disability or death (83.5%); and medical benefits/services (76.5%).
- Less than half learned about death benefits (42.8%), funeral benefits (31.7%), rehabilitation services (16.3%) and carer's allowance (5.4%).
- Only 18.3% and 11.5% of establishments learned about entrepreneurial and vocational training, respectively.

<b>Types of Benefits</b>	<b>Percent</b>
Carer's Allowance	5.4
Rehabilitation Services	16.3
Funeral Benefits	31.7
Death Benefits	42.8
Medical Benefits/Services	76.5
<b>Cash Income Benefits for Sickness, Disability or Death</b>	<b>83.5</b>
<b>Types of Services</b>	
Vocational Training	11.5
Entrepreneurial Training	18.3

*Note: Details will not add up to 100% due to multiple responses.*

### **Establishments' information dissemination on ECP mostly thru seminars**

- Most establishments disseminated information on ECP thru seminars on ECP in coordination with SSS (48.6%) or solely initiated by them (34.0%). (*Figure 3*)
- Other establishments informed their workers about ECP thru flyers (14.4%), posters (11.1%) and seminars on ECP in coordination with ECC (10.2%).
- Only small percentages disseminated information on ECP thru seminars on ECP in coordination with GSIS (1.7%), streamers (1.2%) and comics (0.2%).



*Note: Details will not add up to 100% due to multiple responses.*

*Source of data: Bureau of Labor and Employment Statistics, 2011/2012 BLES Integrated Survey.*

**FOR INQUIRIES**

Regarding this report contact **LABOR STANDARDS STATISTICS DIVISION** at 527-3000 loc. 311  
 Regarding other statistics and technical services contact **BLES DATABANK** at TELEFAX 527-9311  
 Or Write to BLES c/o **Databank**, 3/F DOLE Bldg., Gen. Luna St., Intramuros, Manila, 1002  
 FAX 527-5506 E-mail: bles\_issd@dole.gov.ph Website at <http://www.bles.dole.gov.ph>