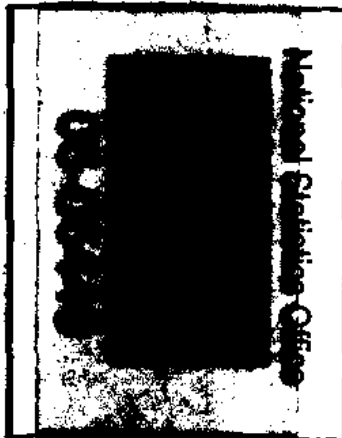


SPECIAL REPORT NO. 2

1980

**CENSUS OF POPULATION BY
CITY/MUNICIPALITY AND BARANGAY**



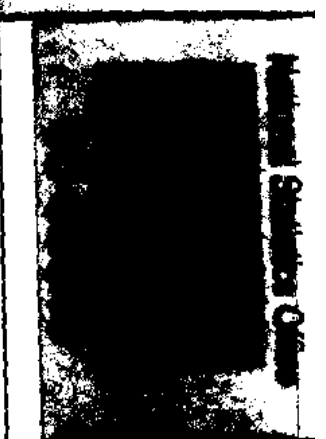
ZAMBOANGA DEL SUR

REPUBLIC OF THE PHILIPPINES
NATIONAL ECONOMIC AND DEVELOPMENT AUTHORITY
NATIONAL CENSUS AND STATISTICS OFFICE
MANILA



MALACANANG
MANILA

BY THE PRESIDENT OF THE PHILIPPINES
PROCLAMATION NO. 2170



DECLARING AS OFFICIAL THE 1980 POPULATION COUNT CONDUCTED
BY THE NATIONAL CENSUS AND STATISTICS OFFICE.

WHEREAS, pursuant to Batas Pambansa Bldg. 72, the National Census and Statistics Office (NCSO) is tasked with undertaking a comprehensive census of population every decade, beginning in 1980, on the provincial, city, municipal and barangay levels;

WHEREAS, per his Memorandum dated January 12, 1982, the Chairman of the National Census Coordinating Board submits the final results of the 1980 census of population for the Philippines by province, city, municipality and barangay; and

WHEREAS under Section 8 of Batas Pambansa Blg. 72, the final population count as determined from the processed census returns shall be considered as official for all purposes only upon proclamation by the President.

NOW THEREFORE, I, FERDINAND E. MARCOS President of the Philippines, by Virtue of the powers vested in me by law, do hereby approve the Final Report of the National Census Coordinating Board on the 1980 Census of Population containing one volume of summary reports which shows a national population as of May 1, 1980 of 48,098,460, and 13 volumes of reports By Region, Province, City, Municipality and Barangay, as submitted by the National Census and Statistics Office which is appended to this proclamation as annex "A" and made an integral part hereof, and the same is hereby declared as official for all purposes.

IN WITNESS WHEREOF, I have hereunto set my hand, and caused the seal of the Republic of the Philippines to be affixed.

Done in the City of Manila this 12th day of March, in the year of Our Lord, nineteen hundred and eighty-two.

By the President:

A large, stylized handwritten signature of Ferdinand E. Marcos is written over the signature line. The signature is bold and cursive, with a prominent initial 'F' and 'M'.

President of the Philippines

JUAN C. TUVERA
Presidential Executive Assistant

MALACAÑANG
Manila

LETTER OF INSTRUCTIONS NO. 1175

TO: The National Economic and Development Authority
The National Census and Statistics Office
The Ministry of Local Government
The Ministry of Finance
The Ministry of the Budget
The Ministry of Justice
The Commission on Elections, and all Ministries, Bureaus, Offices, Agencies and Government Instrumentalities, including government-owned and controlled corporations

WHEREAS, Batas Pambansa Blg. 72 provides for the taking of a national census of population by province, city, municipality and barangay;

WHEREAS, the NEDA had submitted the preliminary results of the 1980 population census of the Philippines by municipality, city and province as conducted by the National Census and Statistics Office (NCSO), which results were approved by the President under LOI 1083, for official use by all agencies and instrumentalities of the government in their planning and/or appraisal of development activities relating to population and other population-related matters;

WHEREAS, the population count at the barangay level could not as yet be finalized by the NCSO inasmuch as there is no complete official listing of barangays available as of this date and it appears that the NCSO list does not tally with the lists provided by the Ministry of Local Governments, the Commission on Elections and the Ministry of Finance;

WHEREAS, Section 8 of Batas Pambansa Blg. 72 provides that "the final population count as determined from the pro-
cessed census returns shall be considered *official for all purposes* upon proclamation by the President." (Underscoring supplied)
NOW, THEREFORE, I, FERDINAND E. MARCOS, President of the Philippines, by virtue of the powers vested in me by law, do hereby order and direct as follows:

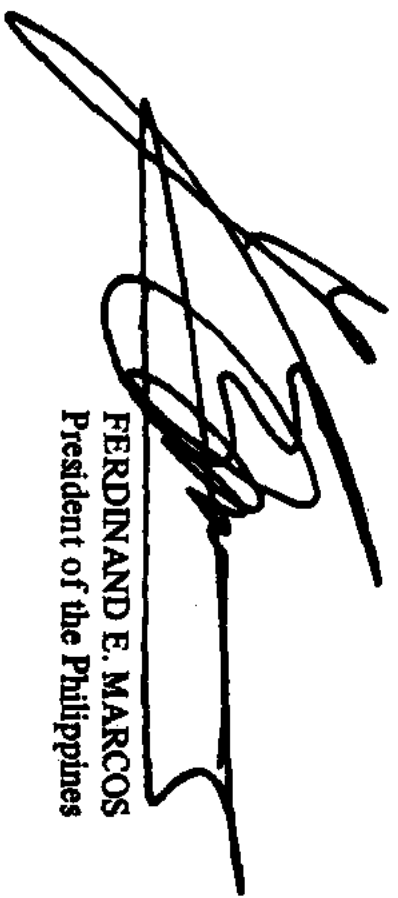
1. In order that the results of the 1980 population census may be proclaimed as provided under Batas Pambansa Blg. 72, and pending the issuance by the Ministry of Local Governments (MLG) of an integrated listing of barangays which shall be considered official for all purposes, the NCSO is hereby directed to finalize the population census at the barangay level by including therein the population counts in all barangays recognized by the Ministry of Local Governments and/or the Commission on Election (COMELEC).

2. Population counts of (a) barangays in existence in 1970 or 1972 which may not be found in either MLG or COMELEC lists, shall be included, and, (b) those barangays created (after the ratification of the Constitution in January 16, 1973) pursuant to Presidential Decree 86 or P.D. 86-A which concern mainly poblaciones, and in the case of Metro Manila, wards, shall be separately indicated and properly noted for formal creation in conformity with the Constitution.

3. Population counts of all other barangays which do not fall into categories (a) and (b) above shall be credited to the corresponding barangays of origin.

This Letter of Instructions shall take effect immediately.

Done in the City of Manila this 19th day of November, in the Year of Our Lord, nineteen hundred and eighty-one.



FERDINAND E. MARCOS
President of the Philippines

FOREWORD


Presented in this report (Special Report No.2) is the final population count classified by sex and the number of private households for each barangay, municipality/city in the Metropolitan Manila Area (NCR) based on the data collected during the 1980 Census of Population in May, 1980.

Pursuant to Batas Pambansa Bilang 72 approved on June 11, 1980, the President under Proclamation No. 2170 dated March 12, 1982 has declared official for all purposes the population count by barangay, by city/municipality and by province.

This regional report is just one of the series of reports being prepared from the result of the 1980 Census, in addition to the two volumes being published traditionally in every population census. Volume I is a provincial report for each of the 73 provinces, containing demographic and other characteristics of the population and housing characteristics, while Volume II is a National Summary and will present statistics for each region and province of the country. A special volume for the National Capital Region will also be published.

Hopefully, the statistics presented in this report will help government agencies in their development planning and program such as those for the Kilusang Kabuhayan at Kaularan (KKK), Biyaya ng Dagat, Samahang Nayon, etc.

The National Census and Statistics Office thankful to His Excellency, the President of the Philippines, and to the Batasang Pambansa for authorizing the taking of the census. We are also grateful to the National Census Coordinating Board (NCCB) for coordinating a systemized involvement of government agencies and instrumentalities in the census taking. Our gratitude is also due the different ministries and other national offices, the local governments and the mass media for their active participation during the field operation. Special mention is made of the assistance and cooperation of the Ministry of Education and Culture whose teachers acted as census supervisors and enumerators during the field enumeration.


TITO A. MIJARES
Executive Director

Manila

April 1982

TOTAL AND PRIVATE HOUSEHOLD POPULATION BY SEX AND NUMBER OF PRIVATE HOUSEHOLDS BY PROVINCE, MUNICIPALITY AND BARANGAY: 1980

(Total population includes the population of private households and collective households.)

CITY, MUNICIPALITY AND BARANGAY	TOTAL POPULATION		PRIVATE HOUSEHOLD POPULATION		NUMBER OF PRIVATE HOUSEHOLDS		
	BOTH SEXES	MALE	FEMALE	BOTH SEXES		MALE	FEMALE
METROPOLITAN MANILA	5,925,884	2,855,712	3,070,172	5,890,023	2,834,313	3,055,710	1,103,563
MANILA	1,630,485	783,127	847,358	1,619,072	778,170	840,903	301,356
TONDOL	565,319	277,577	287,742	564,662	277,324	287,338	103,069
BARANGAY 1	2,358	1,061	1,297	2,358	1,061	1,297	451
BARANGAY 2	1,323	627	696	1,323	627	696	246
BARANGAY 3	1,933	867	1,066	1,933	867	1,066	327
BARANGAY 4	2,172	1,027	1,145	2,162	1,021	1,141	384
BARANGAY 5	1,903	891	1,012	1,903	891	1,012	370
BARANGAY 6	1,110	495	615	1,036	478	558	190
BARANGAY 7	1,994	1,121	873	1,994	873	1,121	362
BARANGAY 8	408	205	203	408	205	203	85
BARANGAY 9	497	247	250	497	247	250	97
BARANGAY 10	1,103	519	584	1,069	501	568	189
BARANGAY 11	2,841	1,410	1,431	2,841	1,410	1,431	517
BARANGAY 12	2,059	1,022	1,037	2,059	1,022	1,037	377
BARANGAY 13	2,515	1,273	1,242	2,515	1,273	1,242	419
BARANGAY 14	1,413	722	691	1,413	722	691	266
BARANGAY 15	1,256	640	616	1,256	640	616	254
BARANGAY 16	2,049	1,026	1,023	2,049	1,026	1,023	350
BARANGAY 17	1,992	992	1,000	1,992	992	1,000	329
BARANGAY 18	3,016	1,580	1,436	3,016	1,580	1,436	593
BARANGAY 19	804	392	412	804	392	412	156
BARANGAY 20	2,668	1,379	1,289	2,668	1,379	1,289	510
BARANGAY 21	901	466	435	901	466	435	175
BARANGAY 22	6,968	3,562	3,406	6,968	3,562	3,406	1,429
BARANGAY 23	1,912	956	956	1,912	956	956	412
BARANGAY 24	378	378	348	378	378	348	130
BARANGAY 25	3,132	1,524	1,608	3,132	1,524	1,608	551

**TOTAL AND PRIVATE HOUSEHOLD POPULATION BY SEX AND NUMBER OF PRIVATE HOUSEHOLDS
BY PROVINCE, MUNICIPALITY AND BARANGAY: 1990 - CONTINUED**
(Total population includes the population of private households and collective households.)

CITY, MUNICIPALITY AND BARANGAY	TOTAL POPULATION		PRIVATE HOUSEHOLD POPULATION		NUMBER OF PRIVATE HOUSEHOLDS		
	BOTH SEXES	MALE	FEMALE	BOTH SEXES		MALE	FEMALE
BAFANGAY 26	3,321	1,651	1,670	3,321	1,651	1,670	586
BAPANGAY 27	3,475	1,748	1,727	3,475	1,748	1,727	720
BARANGAY 28	2,713	1,323	1,390	2,713	1,323	1,390	504
BARANGAY 29	4,420	2,247	2,173	4,420	2,247	2,173	932
BARANGAY 30	2,075	1,067	1,008	2,075	1,067	1,008	491
BARANGAY 31	2,572	1,310	1,262	2,572	1,310	1,262	519
BARANGAY 32	2,294	1,134	1,160	2,294	1,134	1,160	449
BARANGAY 33	4,215	2,095	2,120	4,215	2,095	2,120	772
BARANGAY 34	1,391	704	687	1,391	704	687	219
BARANGAY 35	2,022	1,012	1,010	2,022	1,012	1,010	358
BARANGAY 36	1,702	855	847	1,702	855	847	320
BARANGAY 37	2,736	1,352	984	2,736	1,352	984	371
BARANGAY 38	2,427	1,245	1,182	2,427	1,245	1,182	429
BARANGAY 39	3,537	1,778	1,759	3,537	1,778	1,759	695
BARANGAY 40	1,385	705	680	1,385	705	680	241
BARANGAY 41	2,696	1,363	1,333	2,696	1,363	1,333	504
BARANGAY 42	2,200	1,152	1,152	2,200	1,152	1,152	398
BARANGAY 43	1,642	838	804	1,642	838	804	288
BARANGAY 44	2,531	1,295	1,236	2,531	1,295	1,236	471
BAFANGAY 45	1,802	899	933	1,802	899	933	351
BAFANGAY 46	2,057	1,020	1,037	2,057	1,020	1,037	385
BAFANGAY 47	2,152	1,117	1,085	2,152	1,117	1,085	406
BARANGAY 48	3,884	1,937	1,947	3,884	1,937	1,947	728
BARANGAY 49	2,072	1,011	1,061	2,072	1,011	1,061	358
BARANGAY 50	4,839	2,357	2,482	4,839	2,357	2,482	887
BARANGAY 51	2,672	1,304	1,368	2,672	1,304	1,368	487
BARANGAY 52	2,920	1,479	1,441	2,920	1,479	1,441	473
BAFANGAY 53	3,178	1,561	1,617	3,178	1,561	1,617	558
BAFANGAY 54	2,359	1,135	1,224	2,359	1,135	1,224	427
BAPANGAY 55	2,691	1,246	1,345	2,691	1,246	1,345	438
BARANGAY 56	2,984	1,449	1,535	2,984	1,449	1,535	522
BARANGAY 57	1,803	897	906	1,803	897	906	353
BAPANGAY 58	2,922	1,434	1,488	2,922	1,434	1,488	544
BARANGAY 59	1,901	949	952	1,901	949	952	368
BAFANGAY 60	2,900	1,431	1,469	2,900	1,431	1,469	482

TOTAL AND PRIVATE HOUSEHOLD POPULATION BY SEX AND NUMBER OF PRIVATE HOUSEHOLDS BY PROVINCE, MUNICIPALITY AND BARANGAY: 1980 - CONTINUED

(Total population includes the population of private households and collective households.)

CITY, MUNICIPALITY AND BARANGAY	TOTAL POPULATION		PRIVATE HOUSEHOLD POPULATION		NUMBER OF PRIVATE HOUSEHOLDS		
	BOTH SEXES	MALE	FEMALE	BOTH SEXES		MALE	FEMALE
BARANGAY 61	1,910	916	994	1,910	916	994	400
BARANGAY 62	2,279	1,119	1,160	2,279	1,119	1,160	471
BARANGAY 63	2,118	998	1,120	2,118	998	1,120	309
BARANGAY 64	908	425	483	908	425	483	158
BARANGAY 65	1,989	946	1,043	1,989	946	1,043	358
BARANGAY 66	2,063	1,015	968	2,063	1,015	1,048	401
BARANGAY 67	1,995	1,027	968	1,995	1,027	968	418
BARANGAY 68	1,181	603	578	1,181	603	578	233
BARANGAY 69	2,652	1,253	1,399	2,652	1,253	1,399	486
BARANGAY 70	2,145	1,085	1,060	2,145	1,085	1,060	393
BARANGAY 71	2,452	1,181	1,271	2,452	1,181	1,271	434
BARANGAY 72	1,910	954	956	1,910	954	956	383
BARANGAY 73	1,258	657	601	1,246	651	595	200
BARANGAY 74	1,267	652	615	1,267	652	615	242
BARANGAY 75	1,651	813	838	1,638	800	838	282
BARANGAY 76	1,760	857	903	1,760	857	903	310
BARANGAY 77	1,276	667	609	1,276	667	609	240
BARANGAY 78	1,385	656	729	1,385	656	729	247
BARANGAY 79	1,434	692	742	1,434	692	742	244
BARANGAY 80	1,915	967	948	1,915	967	948	355
BARANGAY 81	1,394	704	690	1,394	704	690	264
BARANGAY 82	2,393	1,150	1,243	2,393	1,150	1,243	434
BARANGAY 83	1,252	634	618	1,252	634	618	207
BARANGAY 84	1,082	532	550	1,082	532	550	169
BARANGAY 85	3,085	1,532	1,553	3,085	1,532	1,553	546
BARANGAY 86	1,677	786	891	1,677	786	891	283
BARANGAY 87	1,831	892	939	1,831	892	939	328
BARANGAY 88	1,752	534	518	1,752	534	518	197
BARANGAY 89	961	465	496	961	465	496	167
BARANGAY 90	822	401	421	822	401	421	151
BARANGAY 91	3,294	1,660	1,634	3,294	1,660	1,634	606
BARANGAY 92	2,995	1,452	1,543	2,995	1,452	1,543	535
BARANGAY 93	3,044	1,556	1,488	3,044	1,556	1,488	545
BARANGAY 94	1,539	757	782	1,539	757	782	283
BAFANGAY 95	4,367	2,166	2,201	4,367	2,166	2,201	838

TOTAL AND PRIVATE HOUSEHOLD POPULATION BY SEX AND NUMBER OF PRIVATE HOUSEHOLDS
BY PROVINCE, MUNICIPALITY AND BARANGAY: 1960 - CONTINUED

(Total population includes the population of private households and collective households.)

CITY, MUNICIPALITY AND BARANGAY	TOTAL POPULATION		PRIVATE HOUSEHOLD POPULATION		NUMBER OF PRIVATE HOUSEHOLDS		
	BOTH SEXES	MALE	FEMALE	BOTH SEXES		MALE	FEMALE
BARANGAY 96	3,033	1,469	1,564	3,033	1,469	1,564	522
BARANGAY 97	2,306	1,110	1,196	2,295	1,105	1,190	439
BARANGAY 98	1,011	500	511	1,011	500	511	186
BARANGAY 99	1,719	863	856	1,719	863	856	288
BARANGAY 100	971	479	492	962	476	484	17
BARANGAY 101	1,933	957	976	1,933	957	976	363
BARANGAY 102	2,568	1,300	1,268	2,568	1,300	1,268	446
BARANGAY 103	3,338	1,692	1,646	3,338	1,692	1,646	586
BARANGAY 104	3,592	1,870	1,722	3,592	1,870	1,722	676
BARANGAY 105	3,241	1,650	1,591	3,241	1,650	1,591	558
BARANGAY 106	1,328	694	634	1,328	694	634	267
BARANGAY 107	5,991	3,029	2,962	5,991	3,029	2,962	1,071
BARANGAY 108	3,042	1,531	1,511	3,042	1,531	1,511	569
BARANGAY 109	2,850	1,446	1,404	2,850	1,446	1,404	512
BARANGAY 110	2,396	1,227	1,169	2,382	1,218	1,164	427
BARANGAY 111	1,899	972	927	1,899	972	927	346
BARANGAY 112	3,839	1,954	1,885	3,839	1,954	1,885	707
BARANGAY 113	2,396	1,214	1,182	2,396	1,214	1,182	419
BARANGAY 114	1,789	929	860	1,789	929	860	289
BARANGAY 115	4,745	2,406	2,339	4,745	2,406	2,339	807
BARANGAY 116	5,758	2,883	2,875	5,758	2,883	2,875	1,132
BARANGAY 117	3,149	1,580	1,569	3,149	1,580	1,569	545
BARANGAY 118	4,313	2,132	2,181	4,313	2,132	2,181	793
BARANGAY 119	3,636	1,824	1,812	3,636	1,824	1,812	662
BARANGAY 120	2,795	1,436	1,359	2,795	1,436	1,359	545
BARANGAY 121	4,220	2,089	2,131	4,220	2,089	2,131	755
BARANGAY 122	3,083	1,554	1,529	3,083	1,554	1,529	499
BARANGAY 123	2,722	1,367	1,355	2,722	1,367	1,355	542
BARANGAY 124	2,072	1,017	1,055	2,061	1,015	1,046	381
BARANGAY 125	2,329	1,153	1,176	2,329	1,153	1,176	422
BARANGAY 126	1,026	459	567	1,026	459	567	166
BARANGAY 127	674	314	360	671	311	360	102
BARANGAY 128	6,256	3,116	3,140	6,256	3,116	3,140	1,268
BARANGAY 129	4,590	2,338	2,252	4,590	2,338	2,252	830
BARANGAY 130	1,529	735	794	1,529	735	794	259

TOTAL AND PRIVATE HOUSEHOLD POPULATION BY SEX AND NUMBER OF PRIVATE HOUSEHOLDS
OF PROVINCE, MUNICIPALITY AND BARANGAY: 1980 - CONTINUED

(Total population includes the population of private households and collective households.)

CITY, MUNICIPALITY AND BARANGAY	TOTAL POPULATION		PRIVATE HOUSEHOLD POPULATION		NUMBER OF PRIVATE HOUSEHOLDS		
	BOTH SEXES	MALE	FEMALE	BOTH SEXES		MALE	FEMALE
BARANGAY 131	1,744	871	873	1,736	871	859	311
BARANGAY 132	2,074	1,018	1,056	2,074	1,018	1,056	366
BARANGAY 133	2,613	1,307	1,306	2,612	1,307	1,306	454
BARANGAY 134	1,320	600	720	1,320	600	720	254
BARANGAY 135	1,330	646	684	1,330	646	684	257
BARANGAY 136	901	424	477	901	424	477	156
BARANGAY 137	1,606	748	858	1,606	748	858	288
BARANGAY 138	2,863	1,406	1,457	2,863	1,406	1,457	522
BARANGAY 139	498	235	263	498	235	263	95
BARANGAY 140	722	321	401	722	321	401	118
BARANGAY 141	486	229	257	486	229	257	91
BARANGAY 142	1,783	872	911	1,783	872	911	301
BARANGAY 143	722	370	352	722	370	352	128
BARANGAY 144	1,549	807	742	1,549	807	742	256
BARANGAY 145	1,048	525	523	1,048	525	523	182
BARANGAY 146	2,845	1,369	1,476	2,845	1,369	1,476	522
BARANGAY 147	1,076	522	554	1,076	522	554	189
BARANGAY 148	2,641	1,266	1,381	2,631	1,260	1,370	465
BARANGAY 149	2,189	1,073	1,116	2,189	1,073	1,116	438
BARANGAY 150	2,154	1,097	1,057	2,154	1,097	1,057	424
BARANGAY 151	1,218	602	616	1,218	602	616	23
BARANGAY 152	2,752	1,390	1,362	2,752	1,390	1,362	487
BARANGAY 153	2,570	1,261	1,309	2,570	1,261	1,309	489
BARANGAY 154	1,317	587	730	1,317	587	730	262
BARANGAY 155	2,479	1,256	1,223	2,479	1,256	1,223	462
BARANGAY 156	1,662	828	834	1,662	828	834	304
BARANGAY 157	1,132	569	563	1,132	569	563	23
BARANGAY 158	2,493	1,235	1,258	2,493	1,235	1,258	467
BARANGAY 159	2,805	1,385	1,420	2,805	1,385	1,420	489
BARANGAY 160	1,807	908	899	1,807	908	899	353
BARANGAY 161	1,382	679	712	1,382	670	712	263
BARANGAY 162	1,056	504	552	1,056	504	552	186
BARANGAY 163	3,178	1,537	1,641	3,178	1,537	1,641	595
BARANGAY 164	2,056	1,017	1,039	2,056	1,017	1,039	392
BARANGAY 165	1,509	728	781	1,509	728	781	297

TOTAL AND PRIVATE HOUSEHOLD POPULATION BY SEX AND NUMBER OF PRIVATE HOUSEHOLDS
BY PROVINCES, MUNICIPALITY AND BARANGAY: 1990 - CONTINUED

(Total population includes the population of private households and collective households.)

CITY, MUNICIPALITY AND BARANGAY	TOTAL POPULATION		PRIVATE HOUSEHOLD POPULATION		NUMBER OF PRIVATE HOUSEHOLDS		
	BOTH SEXES	MALE	FEMALE	BOTH SEXES		MALE	FEMALE
BARANGAY 166	1,589	697	892	1,589	697	892	288
BARANGAY 167	1,180	542	638	1,171	541	630	192
BARANGAY 168	1,744	782	962	1,744	782	962	307
BARANGAY 169	1,798	818	980	1,782	815	967	308
BARANGAY 170	1,095	461	634	1,073	454	619	187
BARANGAY 171	1,393	638	755	1,376	621	755	224
BARANGAY 172	1,207	575	632	1,207	575	632	200
BARANGAY 173	2,125	1,007	1,118	2,125	1,007	1,118	379
BARANGAY 174	947	410	537	937	400	537	171
BARANGAY 175	1,243	554	689	1,243	554	689	206
BARANGAY 176	1,586	704	882	1,574	701	873	269
BARANGAY 177	1,833	900	933	1,832	900	933	348
BARANGAY 178	1,697	793	904	1,697	793	904	272
BARANGAY 179	2,197	1,085	1,112	2,170	1,076	1,094	395
BARANGAY 180	1,806	870	936	1,806	870	936	351
BARANGAY 181	1,801	890	911	1,801	890	911	304
BARANGAY 182	5,380	2,694	2,686	5,380	2,694	2,686	953
BARANGAY 183	3,286	1,570	1,716	3,286	1,570	1,716	594
BARANGAY 184	4,800	2,396	2,404	4,800	2,396	2,404	831
BARANGAY 185	3,874	1,927	1,947	3,874	1,927	1,947	718
BARANGAY 186	2,559	1,228	1,331	2,559	1,228	1,331	464
BARANGAY 187	1,164	567	597	1,164	567	597	200
BARANGAY 188	974	486	488	961	480	481	162
BARANGAY 189	1,763	875	888	1,763	875	888	345
BARANGAY 190	1,255	611	644	1,255	611	644	242
BARANGAY 191	970	475	495	970	475	495	177
BARANGAY 192	1,586	779	807	1,586	779	807	300
BARANGAY 193	438	205	233	438	205	233	79
BARANGAY 194	1,067	534	533	1,067	534	533	203
BARANGAY 195	984	488	496	973	482	491	158
BARANGAY 196	1,708	828	880	1,708	828	880	296
BARANGAY 197	1,321	663	658	1,321	663	658	258
BARANGAY 198	3,767	1,869	1,898	3,767	1,869	1,898	652
BARANGAY 199	2,779	1,397	1,382	2,779	1,397	1,382	517
BARANGAY 200	2,292	1,102	1,190	2,292	1,102	1,190	401

**TOTAL AND PRIVATE HOUSEHOLD POPULATION BY SEX AND NUMBER OF PRIVATE HOUSEHOLDS
BY PROVINCE, MUNICIPALITY AND BARANGAY: 1990 - CONTINUED**

(Total population includes the population of private households and collective households.)

CITY, MUNICIPALITY AND BARANGAY	TOTAL POPULATION		PRIVATE HOUSEHOLD POPULATION		NUMBER OF PRIVATE HOUSEHOLDS		
	BOTH SEXES	MALE	FEMALE	BOTH SEXES		MALE	FEMALE
BAFANGAY 201	2,792	1,296	1,496	2,788	1,292	1,496	522
BAFANGAY 202	2,281	1,050	1,231	2,281	1,050	1,231	43
BAFANGAY 202-A	1,281	615	666	1,281	615	666	253
BAFANGAY 203	2,116	958	1,158	2,116	958	1,158	420
BARANGAY 204	3,513	1,687	1,826	3,513	1,687	1,826	674
BAFANGAY 205	3,122	1,543	1,579	3,122	1,543	1,579	607
HARANGAY 206	2,445	1,235	1,210	2,445	1,235	1,210	489
BARANGAY 207	1,552	726	826	1,552	726	826	280
BARANGAY 208	1,650	858	842	1,650	808	842	320
BARANGAY 209	4,031	1,913	2,118	3,991	1,904	2,087	697
BARANGAY 210	2,634	1,298	1,336	2,617	1,283	1,334	487
BARANGAY 211	2,254	1,179	1,145	2,254	1,109	1,145	413
BAFANGAY 212	2,597	1,312	1,285	2,597	1,312	1,285	450
BARANGAY 213	2,475	1,215	1,269	2,475	1,215	1,260	495
BARANGAY 214	1,364	644	720	1,364	644	720	255
BARANGAY 215	2,676	1,286	1,390	2,676	1,286	1,390	513
BARANGAY 216	2,759	1,382	1,377	2,759	1,382	1,377	495
BARANGAY 217	1,135	571	564	1,135	571	564	215
BARANGAY 218	1,463	726	737	1,463	726	737	283
BARANGAY 219	1,776	801	975	1,776	801	975	364
BARANGAY 220	1,910	839	1,071	1,884	834	1,050	347
BARANGAY 221	2,868	1,383	1,485	2,868	1,383	1,485	517
BARANGAY 222	1,651	801	850	1,651	801	850	298
BARANGAY 223	1,305	641	664	1,305	641	664	261
BARANGAY 224	920	437	483	920	437	483	161
BARANGAY 225	2,119	1,039	1,080	2,119	1,039	1,080	370
BARANGAY 226	1,993	970	1,023	1,992	970	1,023	341
BARANGAY 227	3,717	1,467	1,540	3,007	1,467	1,540	533
BARANGAY 228	1,800	899	901	1,800	899	901	316
BARANGAY 229	1,941	961	980	1,911	954	957	326
BARANGAY 230	1,125	541	584	1,125	541	584	183
BARANGAY 231	1,671	807	864	1,671	807	864	326
BARANGAY 232	3,409	1,680	1,729	3,409	1,680	1,729	640
BARANGAY 233	1,561	747	754	1,434	738	696	253
BARANGAY 234	1,918	949	978	1,918	940	978	345

TOTAL AND PRIVATE HOUSEHOLD POPULATION BY SEX AND NUMBER OF PRIVATE HOUSEHOLDS
BY PROVINCE, MUNICIPALITY AND BARANGAY: 1980 - CONTINUED
(Total population includes the population of private households and collective households.)

CITY, MUNICIPALITY AND BARANGAY	TOTAL POPULATION		PRIVATE HOUSEHOLD POPULATION		NUMBER OF PRIVATE HOUSEHOLDS		
	BOTH SEXES	MALE	FEMALE	BOTH SEXES		MALE	FEMALE
BARANGAY 235	2,543	1,225	1,318	2,543	1,225	1,318	443
BARANGAY 236	993	504	489	993	504	489	168
BAPANGAY 237	1,247	593	654	1,247	593	654	218
BAPANGAY 238	1,170	547	623	1,170	547	623	206
BARANGAY 239	2,526	1,238	1,288	2,516	1,235	1,281	406
BARANGAY 240	251	107	144	251	107	144	41
BARANGAY 241	1,808	892	916	1,808	892	916	319
BARANGAY 242	909	392	517	895	378	517	129
BARANGAY 243	1,490	731	759	1,493	731	759	228
BAPANGAY 244	1,303	642	661	1,303	642	661	253
BARANGAY 245	1,070	492	578	1,055	484	571	202
BARANGAY 246	1,255	597	658	1,255	597	658	232
BAPANGAY 247	384	179	205	372	169	203	64
BARANGAY 248	818	382	436	802	380	422	139
BARANGAY 249	1,358	642	718	1,358	642	718	249
BAPANGAY 250	2,097	938	1,159	2,097	938	1,159	373
BARANGAY 251	889	424	465	889	424	465	145
BARANGAY 252	727	354	373	727	354	373	121
BARANGAY 253	2,502	1,205	1,297	2,502	1,205	1,297	450
BARANGAY 254	3,871	1,906	1,965	3,871	1,906	1,965	706
BARANGAY 255	2,927	1,399	1,528	2,927	1,399	1,528	535
BAPANGAY 256	1,969	979	990	1,969	979	990	345
BARANGAY 257	700	331	369	684	328	356	121
BARANGAY 258	2,263	1,094	1,169	2,263	1,094	1,169	411
BAPANGAY 259	1,991	915	1,076	1,979	903	1,076	336
BAPANGAY 260	1,077	521	556	1,066	515	551	183
BARANGAY 261	1,871	907	964	1,871	907	964	363
BAPANGAY 262	1,301	584	717	1,299	582	717	253
BARANGAY 263	1,272	536	736	1,262	536	726	221
BAPANGAY 264	2,717	1,339	1,378	2,717	1,339	1,378	475
BARANGAY 265	164	79	85	164	79	85	27
BARANGAY 266	2,548	1,069	1,479	2,548	1,069	1,479	436
CARANGAY 267	2,198	1,089	1,109	2,198	1,089	1,109	363
	16,519	7,507	9,012	16,416	7,459	8,957	2,977

TOTAL AND PRIVATE HOUSEHOLD POPULATION BY SEX AND NUMBER OF PRIVATE HOUSEHOLDS
BY PROVINCE, MUNICIPALITY AND BARANGAY: 1980 - CONTINUED

(Total population includes the population of private households and collective households.)

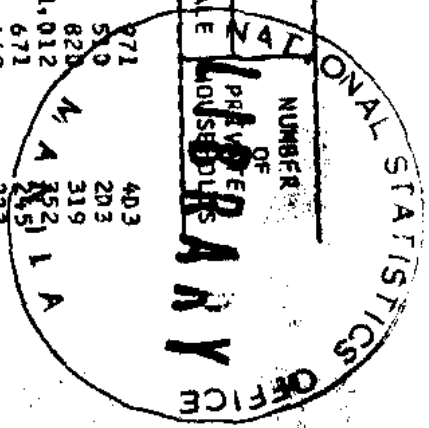
CITY, MUNICIPALITY AND BARANGAY	TOTAL POPULATION				PRIVATE HOUSEHOLD POPULATION				NUMBER OF PRIVATE HOUSEHOLDS				
	BOTH SEXES		MALE		FEMALE		BOTH SEXES			MALE		FEMALE	
BARANGAY 287	1,667	719	948	1,667	719	948	324						
BARANGAY 288	1,937	838	1,099	1,937	838	1,099	34						
BARANGAY 289	1,246	585	661	1,242	581	661	205						
BARANGAY 290	372	184	168	367	182	185	64						
BARANGAY 291	395	193	202	388	185	195	71						
BARANGAY 292	2,196	918	1,278	2,186	916	1,268	367						
BARANGAY 293	4,130	1,982	2,148	4,117	1,976	2,141	804						
BARANGAY 294	2,231	1,008	1,223	2,175	980	1,195	379						
BARANGAY 295	795	375	420	795	375	420	129						
BARANGAY 296	1,550	705	845	1,550	705	845	294						
QUIAPO	26,651	12,292	14,359	26,341	12,173	14,168	5,327						
BARANGAY 383	863	441	422	863	441	422	168						
BARANGAY 384	1,102	471	631	1,102	471	631	189						
BARANGAY 385	2,267	1,073	1,194	2,267	1,073	1,194	425						
BARANGAY 386	2,180	1,024	1,156	2,16	1,008	1,152	443						
BARANGAY 387	2,788	1,293	1,495	2,788	1,293	1,495	501						
BARANGAY 388	1,464	694	770	1,464	694	770	282						
BARANGAY 389	1,731	780	951	1,727	778	949	341						
BARANGAY 390	1,357	562	795	1,351	516	835	261						
BARANGAY 391	3,151	1,484	1,667	3,151	1,484	1,667	648						
BARANGAY 392	1,732	740	992	1,732	740	992	373						
BARANGAY 393	2,007	860	1,147	2,007	860	1,147	442						
BARANGAY 394	1,261	612	649	1,261	612	649	325						
BARANGAY 396	1,341	651	690	1,341	651	690	246						
BARANGAY 307	898	399	499	888	389	499	177						
BARANGAY 308	2,509	1,208	1,301	2,439	1,163	1,276	506						
SAN NICOLAS	39,200	19,155	20,045	39,181	19,144	20,037	7,031						
BARANGAY 268	1,140	534	606	1,140	534	606	231						
BARANGAY 269	876	399	477	876	399	477	138						
BARANGAY 270	2,649	1,234	1,415	2,649	1,234	1,415	458						
BARANGAY 271	1,801	807	994	1,801	807	994	328						
BARANGAY 272	1,538	760	778	1,538	760	778	282						
BARANGAY 273	1,448	709	739	1,448	709	739	247						

TOTAL AND PRIVATE HOUSEHOLD POPULATION BY SEX AND NUMBER OF PRIVATE HOUSEHOLDS
BY PROVINCE, MUNICIPALITY AND BARANGAY: 1980 - CONTINUED
(Total population includes the population of private households and collective households.)

CITY, MUNICIPALITY AND BARANGAY	TOTAL POPULATION		PRIVATE HOUSEHOLD POPULATION		NUMBER OF PRIVATE HOUSEHOLDS		
	BOTH SEXES	MALE	FEMALE	BOTH SEXES		MALE	FEMALE
BARANGAY 274	2,042	1,034	1,008	2,042	1,034	1,008	413
BARANGAY 275	4,324	2,169	2,155	4,324	2,169	2,155	828
BARANGAY 276	2,945	1,470	1,475	2,945	1,470	1,475	557
BARANGAY 277	2,433	1,267	1,166	2,433	1,267	1,166	427
BARANGAY 278	2,580	1,325	1,255	2,580	1,325	1,255	483
BARANGAY 279	2,891	1,470	1,421	2,891	1,470	1,421	501
BARANGAY 280	1,005	519	486	1,005	519	486	186
BARANGAY 281	3,284	1,474	1,810	3,284	1,474	1,810	541
BARANGAY 282	1,249	548	701	1,249	548	701	220
BARANGAY 283	2,063	1,028	1,035	2,063	1,028	1,035	345
BARANGAY 284	1,660	786	874	1,660	786	874	295
BARANGAY 285	1,587	742	845	1,587	742	845	272
BARANGAY 286	1,685	880	805	1,666	869	797	277
SANTA CRUZ	135,805	64,761	71,044	133,098	62,940	70,158	25,383
BARANGAY 297	1,499	747	752	1,499	747	752	282
BARANGAY 298	1,297	668	629	1,216	614	602	229
BARANGAY 299	1,082	504	578	1,082	504	578	187
BARANGAY 300	683	335	348	682	335	348	125
BARANGAY 301	1,246	631	615	1,246	631	615	223
BARANGAY 302	887	436	451	871	428	443	184
BARANGAY 303	338	173	165	326	161	165	72
BARANGAY 304	174	92	92	146	68	78	33
BARANGAY 305	1,024	501	523	1,002	479	523	182
BARANGAY 309	774	374	400	774	374	400	145
BARANGAY 310	3,919	2,478	1,441	2,443	1,109	1,334	507
BARANGAY 311	1,568	632	936	1,244	604	640	301
BARANGAY 312	1,023	485	538	1,023	482	538	251
BARANGAY 313	2,592	1,260	1,332	2,537	1,223	1,314	527
BARANGAY 314	2,201	1,012	1,189	2,171	986	1,185	430
BARANGAY 315	1,699	791	908	1,684	791	893	309
BARANGAY 316	2,529	1,152	1,377	2,503	1,141	1,359	477
BARANGAY 317	2,018	912	1,106	2,018	912	1,106	368
BARANGAY 318	1,357	654	703	1,352	649	703	259
BARANGAY 319	1,232	555	677	1,232	555	677	235

**TOTAL AND PRIVATE HOUSEHOLD POPULATION BY SEX AND NUMBER OF PRIVATE HOUSEHOLDS
BY PROVINCE, MUNICIPALITY AND BARANGAY; 1990 - CONTINUED**
(Total population includes the population of private households and collective households.)

CITY, MUNICIPALITY AND BARANGAY	TOTAL POPULATION		PRIVATE HOUSEHOLD POPULATION		NUMBER OF PRIVATE HOUSEHOLDS		
	BOTH SEXES	MALE	FEMALE	BOTH SEXES		MALE	FEMALE
BARANGAY 320	1,823	852	971	1,808	837	971	403
BARANGAY 321	935	425	510	922	412	510	203
BARANGAY 322	1,486	666	820	1,486	666	820	319
BARANGAY 323	1,880	868	1,012	1,880	868	1,012	352
BARANGAY 324	1,212	541	671	1,212	541	671	251
BARANGAY 325	1,137	488	649	1,133	484	649	233
BARANGAY 326	1,017	501	516	972	475	497	176
BARANGAY 327	1,355	637	718	1,355	637	718	231
BARANGAY 328	941	441	500	937	438	493	180
BARANGAY 329	1,062	532	530	1,062	532	530	196
BARANGAY 330	1,491	716	775	1,491	716	775	279
BARANGAY 331	1,554	679	875	1,325	633	692	236
BARANGAY 332	1,387	636	751	1,387	636	751	318
BARANGAY 333	1,115	504	611	1,115	504	611	260
BARANGAY 334	1,170	558	612	1,145	543	602	212
BARANGAY 335	1,843	870	973	1,843	870	973	440
BARANGAY 336	1,801	840	961	1,795	836	959	427
BARANGAY 337	2,597	1,215	1,382	2,582	1,204	1,378	474
BARANGAY 338	2,063	953	1,110	2,063	953	1,110	371
BARANGAY 339	2,455	1,206	1,249	2,436	1,194	1,242	466
BARANGAY 340	2,884	1,367	1,517	2,792	1,324	1,469	501
BARANGAY 341	2,372	1,141	1,231	2,355	1,128	1,227	390
BARANGAY 342	2,870	1,364	1,506	2,868	1,362	1,506	518
BARANGAY 343	2,110	930	1,180	2,043	930	1,113	359
BARANGAY 344	1,344	657	687	1,329	642	687	253
BARANGAY 345	1,934	874	1,060	1,934	874	1,060	332
BARANGAY 346	1,896	888	1,008	1,892	884	1,008	356
BARANGAY 347	1,560	755	805	1,563	755	805	279
BARANGAY 348	1,144	524	620	1,144	524	620	241
BARANGAY 349	1,343	678	665	1,343	678	665	264
BARANGAY 350	378	196	182	378	196	182	93
BARANGAY 351	4,045	1,959	2,086	4,045	1,959	2,086	731
BARANGAY 352	2,517	1,223	1,294	2,517	1,223	1,294	452
BARANGAY 353	3,271	1,567	1,704	3,271	1,567	1,704	593
BARANGAY 354	3,340	1,528	1,812	3,340	1,528	1,812	595



TOTAL AND PRIVATE HOUSEHOLD POPULATION BY SEX AND NUMBER OF PRIVATE HOUSEHOLDS
BY PROVINCE, MUNICIPALITY AND BARANGAY; 1980 - CONTINUED
(Total population includes the population of private households and collective households.)

CITY, MUNICIPALITY AND BARANGAY	TOTAL POPULATION		PRIVATE HOUSEHOLD POPULATION		NUMBER OF PRIVATE HOUSEHOLDS		
	BOTH SEXES	MALE	FEMALE	BOTH SEXES		MALE	FEMALE
BARANGAY 355	1,571	728	843	1,571	728	843	257
BARANGAY 356	658	310	348	658	310	348	124
BARANGAY 357	1,315	595	720	1,311	591	720	230
BARANGAY 358	1,333	630	703	1,333	630	703	219
BARANGAY 359	626	301	325	626	301	325	102
BARANGAY 360	1,195	568	627	1,195	568	627	216
BARANGAY 361	1,598	763	835	1,598	763	835	327
BARANGAY 362	579	255	324	579	255	324	117
BARANGAY 363	804	375	429	804	375	429	154
BARANGAY 364	2,574	1,248	1,326	2,574	1,248	1,326	461
BARANGAY 365	1,274	631	643	1,274	631	643	220
BARANGAY 366	1,739	821	918	1,739	821	918	314
BARANGAY 367	2,076	972	1,104	2,076	972	1,104	380
BARANGAY 368	1,938	914	1,024	1,938	914	1,024	346
BARANGAY 369	1,492	673	819	1,492	673	819	281
BARANGAY 370	950	431	519	951	431	519	209
BARANGAY 371	1,619	713	906	1,619	713	906	390
BARANGAY 372	1,256	584	672	1,233	584	649	231
BARANGAY 373	2,957	1,473	1,484	2,957	1,473	1,484	541
BARANGAY 374	2,422	1,208	1,214	2,422	1,208	1,214	490
BARANGAY 375	3,047	1,486	1,561	3,047	1,486	1,561	580
BARANGAY 376	1,219	604	615	1,219	604	615	206
BARANGAY 377	1,148	545	603	1,148	545	603	205
BARANGAY 378	1,588	745	843	1,588	745	843	283
BARANGAY 379	895	413	482	895	413	482	174
BARANGAY 380	1,323	626	697	1,323	626	697	244
BARANGAY 381	2,483	1,222	1,261	2,483	1,222	1,261	490
BARANGAY 382	1,652	766	886	1,645	764	881	290
SAMPALDIC	408,083	192,039	216,045	404,071	190,946	213,125	77,282
BARANGAY 395	1,294	513	781	1,033	457	576	265
BARANGAY 396	1,909	726	1,183	1,666	705	961	353
BARANGAY 397	2,454	1,018	1,436	2,156	937	1,219	413
BARANGAY 398	2,432	1,148	1,284	2,432	1,148	1,284	508
BARANGAY 399	1,524	713	811	1,524	713	811	323

TOTAL AND PRIVATE HOUSEHOLD POPULATION BY SEX AND NUMBER OF PRIVATE HOUSEHOLDS
BY PROVINCE, MUNICIPALITY AND BARANGAY: 1980 - CONTINUED

(Total population includes the population of private households and collective households.)

CITY, MUNICIPALITY AND BARANGAY	TOTAL POPULATION		PRIVATE HOUSEHOLD POPULATION		NUMBER OF PRIVATE HOUSEHOLDS		
	BOTH SEXES	MALE	FEMALE	BOTH SEXES		MALE	FEMALE
BARANGAY 400	1,979	906	1,073	1,849	665	984	414
BARANGAY 401	3,312	1,532	1,780	3,297	1,523	1,774	761
BARANGAY 402	4,083	1,909	2,174	4,037	1,903	2,134	836
BARANGAY 403	1,969	785	1,184	1,486	672	814	304
BARANGAY 404	1,713	649	1,064	1,420	600	820	431
BARANGAY 405	1,517	703	814	1,517	703	814	292
BARANGAY 406	965	448	517	965	448	517	199
BARANGAY 407	2,489	1,239	1,250	2,489	1,239	1,250	569
BARANGAY 408	2,068	983	1,085	2,068	983	1,085	399
BARANGAY 409	2,898	1,399	1,499	2,896	1,397	1,499	591
BARANGAY 410	1,417	656	763	1,375	651	719	253
BARANGAY 411	2,942	1,415	1,527	2,938	1,411	1,527	594
BARANGAY 412	2,168	925	1,243	2,034	925	1,109	375
BARANGAY 413	2,241	1,037	1,204	2,241	1,037	1,204	487
BARANGAY 414	1,338	613	725	1,301	596	705	238
BARANGAY 415	1,331	596	735	1,321	586	735	328
BARANGAY 416	1,128	485	643	993	451	542	212
BARANGAY 417	2,979	1,455	1,524	2,979	1,455	1,524	560
BARANGAY 418	3,300	1,548	1,752	3,293	1,543	1,750	615
BARANGAY 419	2,327	1,120	1,207	2,327	1,120	1,207	440
BARANGAY 420	2,389	1,133	1,256	2,389	1,133	1,256	438
BARANGAY 421	1,992	925	1,067	1,992	925	1,067	407
BARANGAY 422	2,333	1,090	1,243	2,333	1,090	1,243	446
BARANGAY 423	1,920	871	1,049	1,920	871	1,049	372
BARANGAY 424	2,257	1,032	1,225	2,257	1,032	1,225	463
BARANGAY 425	2,260	1,021	1,239	2,260	1,021	1,239	457
BARANGAY 426	2,477	1,162	1,315	2,477	1,155	1,305	581
BARANGAY 427	1,172	498	604	1,082	488	594	211
BARANGAY 428	2,218	1,036	1,182	2,218	1,036	1,182	422
BARANGAY 429	2,254	1,123	1,131	2,254	1,123	1,131	390
BARANGAY 430	810	375	435	81	375	435	163
BARANGAY 431	1,211	582	629	1,211	582	629	240
BARANGAY 432	3,768	1,838	1,930	3,768	1,838	1,930	720
BARANGAY 433	884	402	482	875	397	478	161
BARANGAY 434	1,803	904	899	1,803	904	899	334

TOTAL AND PRIVATE HOUSEHOLD POPULATION BY SEX AND NUMBER OF PRIVATE HOUSEHOLDS
BY PROVINCE, MUNICIPALITY AND BARANGAY, 1980 - CONTINUED
(Total population includes the population of private households and collective households.)

CITY, MUNICIPALITY AND BARANGAY	TOTAL POPULATION		PRIVATE HOUSEHOLD POPULATION		NUMBER OF PRIVATE HOUSEHOLDS		
	BOTH SEXES	MALE	FEMALE	BOTH SEXES		MALE	FEMALE
BARANGAY 435	1,094	469	625	1,057	468	569	173
BARANGAY 436	1,789	874	915	1,788	873	915	310
BARANGAY 437	1,299	631	668	1,299	632	668	227
BARANGAY 438	1,049	495	554	1,049	495	554	188
BARANGAY 439	1,586	757	829	1,586	757	829	289
BARANGAY 440	1,530	749	781	1,530	749	781	273
BARANGAY 441	1,395	656	739	1,378	651	727	246
BARANGAY 442	1,073	508	565	1,073	508	565	209
BARANGAY 443	1,797	857	940	1,784	849	935	306
BARANGAY 444	1,707	844	863	1,707	844	863	292
BARANGAY 445	1,323	645	678	1,323	645	678	243
BARANGAY 446	1,538	778	760	1,538	778	760	231
BARANGAY 447	1,669	816	853	1,635	789	846	288
BARANGAY 448	2,028	956	1,072	2,028	956	1,072	340
BARANGAY 449	1,838	852	986	1,838	852	986	371
BARANGAY 450	2,817	1,351	1,466	2,815	1,349	1,466	504
BARANGAY 451	2,452	1,205	1,247	2,452	1,205	1,247	450
BARANGAY 452	1,331	627	704	1,331	627	704	248
BARANGAY 453	2,352	1,097	1,255	2,343	1,095	1,248	439
BARANGAY 454	1,230	519	711	1,230	519	711	261
BARANGAY 455	1,599	775	824	1,599	775	824	299
BARANGAY 456	2,779	1,362	1,417	2,779	1,362	1,417	514
BARANGAY 457	1,642	645	997	1,642	628	1,014	309
BARANGAY 458	2,980	1,298	1,682	2,980	1,298	1,682	510
BARANGAY 459	1,762	805	957	1,716	781	935	306
BARANGAY 460	1,564	706	858	1,519	683	836	271
BARANGAY 461	1,536	710	826	1,536	710	826	301
BARANGAY 462	1,173	459	714	1,034	439	565	230
BARANGAY 463	1,778	809	969	1,656	738	918	392
BARANGAY 464	2,404	1,153	1,251	2,384	1,152	1,232	494
BARANGAY 465	1,444	569	875	1,349	563	786	264
BARANGAY 466	922	414	508	922	414	508	178
BARANGAY 467	904	426	478	904	426	478	178
BARANGAY 468	847	371	476	795	350	445	180
BARANGAY 469	1,252	569	683	1,221	545	676	280

**TOTAL AND PRIVATE HOUSEHOLD POPULATION BY SEX AND NUMBER OF PRIVATE HOUSEHOLDS
BY PROVINCE, MUNICIPALITY AND BARANGAY: 1980 - CONTINUED**

(Total population includes the population of private households and collective households.)

CITY, MUNICIPALITY AND BARANGAY	TOTAL POPULATION		PRIVATE HOUSEHOLD POPULATION		NUMBER OF PRIVATE HOUSEHOLDS		
	BOTH SEXES	MALE	FEMALE	BOTH SEXES		MALE	FEMALE
BARANGAY 470	1,277	515	762	1,178	493	685	214
BARANGAY 471	1,662	742	920	1,598	716	882	324
BARANGAY 472	1,452	695	757	1,452	695	757	281
BARANGAY 473	2,080	968	1,112	2,080	968	1,112	386
BARANGAY 474	1,451	675	776	1,451	675	776	271
BARANGAY 475	1,930	925	1,005	1,930	925	1,005	383
BARANGAY 476	1,418	637	781	1,418	637	781	334
BARANGAY 477	2,046	859	1,187	2,046	859	1,187	366
BARANGAY 478	1,664	774	890	1,607	733	874	330
BARANGAY 479	1,169	498	671	1,005	430	575	182
BARANGAY 480	807	368	439	807	368	439	157
BARANGAY 481	1,210	541	669	1,159	520	639	253
BARANGAY 482	1,418	631	787	1,389	629	760	251
BARANGAY 483	1,471	682	789	1,471	682	789	270
BARANGAY 484	1,280	602	678	1,280	602	678	237
BARANGAY 485	2,030	985	1,045	2,030	985	1,045	376
BARANGAY 486	1,687	766	921	1,671	766	905	311
BARANGAY 487	1,602	745	857	1,602	745	857	294
BARANGAY 488	1,073	513	560	1,073	513	560	212
BARANGAY 489	1,825	815	1,010	1,800	811	989	331
BARANGAY 490	561	224	337	542	223	319	116
BARANGAY 491	1,148	510	638	1,146	509	637	221
BARANGAY 492	1,321	609	712	1,321	609	712	250
BARANGAY 493	1,445	704	741	1,445	704	741	247
BARANGAY 494	2,397	1,194	1,303	2,384	1,187	1,297	404
BARANGAY 495	2,144	962	1,182	2,144	962	1,182	388
BARANGAY 496	1,582	792	790	1,582	792	790	278
BARANGAY 497	2,069	929	1,140	2,069	929	1,140	410
BARANGAY 498	1,602	770	832	1,602	770	832	332
BARANGAY 499	2,205	1,074	1,131	2,205	1,074	1,131	394
BARANGAY 500	3,029	1,396	1,633	3,029	1,396	1,633	518
BARANGAY 501	1,135	529	606	1,135	529	606	211
BARANGAY 502	1,190	549	641	1,190	549	641	227
BARANGAY 503	1,379	607	772	1,369	607	767	286
BARANGAY 504	1,216	551	665	1,216	551	665	231

TOTAL AND PRIVATE HOUSEHOLD POPULATION BY SEX AND NUMBER OF PRIVATE HOUSEHOLDS
BY PROVINCE, MUNICIPALITY AND BARANGAY: 1980 - CONTINUED

(Total population includes the population of private households and collective households.)

CITY, MUNICIPALITY AND BARANGAY	TOTAL POPULATION		PRIVATE HOUSEHOLD POPULATION		NUMBER OF PRIVATE HOUSEHOLDS		
	BOTH SEXES	MALE	FEMALE	BOTH SEXES		MALE	FEMALE
BARANGAY 505	1,733	841	892	1,733	841	892	327
BARANGAY 506	1,091	490	601	1,090	489	601	219
BARANGAY 507	1,484	711	773	1,484	711	773	277
BARANGAY 508	1,654	746	908	1,654	746	908	285
BARANGAY 509	1,969	927	1,042	1,969	927	1,042	367
BARANGAY 510	1,295	644	651	1,295	644	651	242
BARANGAY 511	2,326	1,150	1,176	2,326	1,150	1,176	421
BARANGAY 512	2,091	976	1,115	2,091	976	1,115	464
BARANGAY 513	3,038	1,427	1,611	3,038	1,427	1,611	623
BARANGAY 514	2,549	1,199	1,350	2,549	1,199	1,350	438
BARANGAY 515	3,158	1,486	1,672	3,158	1,486	1,672	587
BARANGAY 516	1,457	699	758	1,457	699	758	258
BARANGAY 517	1,619	739	880	1,619	739	880	288
BARANGAY 518	2,806	1,285	1,521	2,806	1,285	1,521	570
BARANGAY 519	2,227	1,043	1,184	2,227	1,043	1,184	411
BARANGAY 520	809	377	432	809	377	432	172
BARANGAY 521	1,255	1,255	1,382	1,255	1,255	1,382	521
BARANGAY 522	1,276	602	674	1,276	602	674	224
BARANGAY 523	1,411	640	771	1,411	640	771	261
BARANGAY 524	1,342	649	693	1,342	649	693	284
BARANGAY 525	1,684	807	877	1,684	807	877	359
BARANGAY 526	806	388	418	806	388	418	174
BARANGAY 527	2,131	1,067	1,064	2,131	1,067	1,064	364
BARANGAY 528	1,177	542	635	1,177	542	635	251
BARANGAY 529	1,294	611	683	1,294	611	683	245
BARANGAY 530	591	257	334	591	257	334	131
BARANGAY 531	1,262	587	675	1,262	587	675	234
BARANGAY 532	1,529	720	809	1,529	720	809	313
BARANGAY 533	1,069	504	565	1,069	504	565	235
BARANGAY 534	951	479	472	951	479	472	201
BARANGAY 535	1,642	787	855	1,642	787	855	328
BARANGAY 536	1,542	750	792	1,542	750	792	302
BARANGAY 537	1,046	526	520	1,046	526	520	201
BARANGAY 538	1,232	611	621	1,232	611	621	241
BARANGAY 539	2,014	946	1,068	2,014	946	1,068	393

TOTAL AND PRIVATE HOUSEHOLD POPULATION BY SEX AND NUMBER OF PRIVATE HOUSEHOLDS
BY PROVINCE, MUNICIPALITY AND BARANGAY: 1980 - CONTINUED

(Total population includes the population of private households and collective households.)

CITY, MUNICIPALITY AND BARANGAY	TOTAL POPULATION		PRIVATE HOUSEHOLD POPULATION		NUMBER OF PRIVATE HOUSEHOLDS		
	BOTH SEXES	MALE	FEMALE	BOTH SEXES		MALE	FEMALE
BARANGAY 540	1,875	906	969	1,875	906	969	373
BARANGAY 541	890	415	475	890	415	475	185
BARANGAY 542	1,062	518	544	1,062	518	544	202
BARANGAY 543	893	392	501	893	392	501	163
BARANGAY 544	968	494	474	968	494	474	183
BARANGAY 545	929	467	462	929	467	462	203
BARANGAY 546	1,503	688	815	1,503	688	815	279
BARANGAY 547	1,497	682	815	1,497	682	815	252
BARANGAY 548	1,903	470	533	1,903	470	533	184
BARANGAY 549	1,061	511	550	1,061	511	550	215
BARANGAY 550	896	417	479	896	417	479	181
BARANGAY 551	742	358	384	742	358	384	155
BARANGAY 552	1,377	662	715	1,377	662	715	270
BARANGAY 553	1,405	671	734	1,405	671	734	284
BARANGAY 554	1,664	874	850	1,664	874	860	357
BARANGAY 555	1,419	686	733	1,419	678	732	266
BARANGAY 556	1,034	480	554	1,034	480	554	199
BARANGAY 557	1,380	681	699	1,380	681	699	246
BARANGAY 558	1,447	709	738	1,447	709	738	259
BARANGAY 559	1,648	818	830	1,648	818	830	302
BARANGAY 560	1,043	498	545	1,043	498	545	182
BARANGAY 561	2,650	1,338	1,312	2,650	1,338	1,312	508
BARANGAY 562	2,727	1,369	1,358	2,727	1,369	1,358	498
BARANGAY 563	1,492	728	764	1,492	728	764	273
BARANGAY 564	1,756	851	905	1,756	851	905	369
BARANGAY 565	2,863	1,393	1,470	2,863	1,393	1,470	543
BARANGAY 566	2,261	1,095	1,166	2,261	1,095	1,166	427
BARANGAY 567	2,381	1,126	1,255	2,374	1,123	1,251	474
BARANGAY 568	1,816	891	925	1,816	891	925	348
BARANGAY 569	2,529	1,266	1,263	2,529	1,266	1,263	455
BARANGAY 570	2,699	1,246	1,453	2,699	1,246	1,453	498
BARANGAY 571	1,584	805	779	1,584	805	779	284
BARANGAY 572	1,869	937	932	1,869	937	932	345
BARANGAY 573	1,231	583	648	1,231	583	648	246
BARANGAY 574	1,665	789	876	1,665	789	876	297

TOTAL AND PRIVATE HOUSEHOLD POPULATION BY SEX AND NUMBER OF PRIVATE HOUSEHOLDS
BY PROVINCE, MUNICIPALITY AND BARANGAY: 1980 - CONTINUED
(Total population includes the population of private households and collective households.)

CITY, MUNICIPALITY AND BARANGAY	TOTAL POPULATION		PRIVATE HOUSEHOLD POPULATION		NUMBER OF PRIVATE HOUSEHOLDS		
	BOTH SEXES	MALE	FEMALE	BOTH SEXES		MALE	FEMALE
BARANGAY 575	1,343	658	685	1,343	658	685	244
BARANGAY 576	3,134	1,546	1,588	3,134	1,546	1,588	599
BARANGAY 577	1,291	633	658	1,291	633	658	253
BARANGAY 578	1,445	689	756	1,445	689	756	268
BARANGAY 579	2,077	967	1,110	2,077	967	1,110	376
BARANGAY 580	2,475	1,189	1,286	2,475	1,189	1,286	431
BARANGAY 581	2,048	1,002	1,046	2,048	1,002	1,046	391
BARANGAY 582	1,503	730	773	1,503	730	773	263
BAPANGAY 583	1,410	717	693	1,410	717	693	249
BARANGAY 584	2,638	1,300	1,338	2,638	1,300	1,338	481
BARANGAY 585	652	284	368	652	284	368	116
BARANGAY 586	1,436	652	784	1,436	652	784	255
BARANGAY 587	1,296	614	682	1,296	614	682	250
BARANGAY 587-A	2,280	1,099	1,181	2,266	1,085	1,181	423
BARANGAY 588	1,426	662	764	1,393	652	741	287
BARANGAY 589	1,397	615	782	1,393	613	780	251
BARANGAY 590	2,719	1,451	1,268	2,719	1,451	1,268	485
BARANGAY 591	2,547	1,269	1,278	2,532	1,254	1,278	445
BARANGAY 592	2,209	1,039	1,170	2,209	1,039	1,170	429
BARANGAY 593	1,754	890	864	1,750	886	864	338
BARANGAY 594	1,447	684	763	1,447	684	763	314
BARANGAY 595	2,669	1,279	1,390	2,669	1,279	1,390	488
BARANGAY 596	2,414	1,174	1,240	2,414	1,174	1,240	425
BARANGAY 597	2,046	959	1,087	2,046	959	1,087	377
BARANGAY 598	2,607	1,300	1,307	2,607	1,300	1,307	500
BARANGAY 599	1,128	559	569	1,103	541	562	208
BARANGAY 600	1,442	724	718	1,442	724	718	271
BARANGAY 601	3,115	1,551	1,564	3,115	1,551	1,564	588
BAPANGAY 602	1,068	480	588	1,068	480	588	180
BARANGAY 603	980	443	537	980	443	537	156
BARANGAY 604	1,116	556	560	1,116	556	560	222
BARANGAY 605	704	294	410	704	294	410	132
BARANGAY 606	588	226	362	460	212	248	102
BARANGAY 607	947	464	483	947	464	483	186
BARANGAY 608	754	332	422	751	332	419	138

TOTAL AND PRIVATE HOUSEHOLD POPULATION BY SEX AND NUMBER OF PRIVATE HOUSEHOLDS
BY PROVINCE, MUNICIPALITY AND BARANGAY: 1980 - CONTINUED

(Total population includes the population of private households and collective households.)

CITY, MUNICIPALITY AND BARANGAY	TOTAL POPULATION		PRIVATE HOUSEHOLD POPULATION		NUMBER OF PRIVATE HOUSEHOLDS		
	BOTH SEXES	MALE	FEMALE	BOTH SEXES		MALE	FEMALE
BARANGAY 609	1,188	556	632	1,184	552	632	218
BARANGAY 610	945	432	513	935	422	513	177
BARANGAY 611	926	426	500	926	426	500	178
BARANGAY 612	734	357	377	734	357	377	119
BARANGAY 613	684	300	384	684	300	384	104
BARANGAY 614	936	399	537	936	399	537	149
BARANGAY 615	1,190	610	580	1,190	610	580	230
BARANGAY 616	1,119	485	634	1,109	478	622	180
BARANGAY 617	819	347	472	819	347	472	154
BARANGAY 618	832	407	425	832	407	425	149
BARANGAY 619	1,512	761	751	1,484	733	751	256
BARANGAY 620	890	414	476	875	405	470	159
BARANGAY 621	1,362	666	696	1,362	666	696	268
BARANGAY 622	1,571	735	836	1,571	735	836	279
BARANGAY 623	1,988	449	539	988	449	539	175
BARANGAY 624	1,537	716	821	1,537	716	821	273
BARANGAY 625	1,287	588	699	1,287	588	699	278
BARANGAY 626	1,885	831	1,054	1,874	825	1,049	355
BARANGAY 627	1,902	867	1,035	1,902	867	1,035	354
BARANGAY 628	3,426	1,661	1,765	3,408	1,661	1,747	662
BARANGAY 629	1,899	886	1,013	1,899	886	1,013	347
BARANGAY 630	2,882	1,434	1,448	2,882	1,434	1,448	551
BARANGAY 631	1,670	754	916	1,670	754	916	311
BARANGAY 632	484	214	270	484	214	270	93
BARANGAY 633	762	345	417	762	345	417	147
BARANGAY 634	1,986	949	1,037	1,954	937	1,017	388
BARANGAY 635	2,392	1,181	1,211	2,392	1,181	1,211	451
BARANGAY 636	1,156	521	635	1,156	521	635	191
AN MIGJEL	20,278	9,549	10,729	20,018	9,450	10,568	3,786
BARANGAY 637	1,509	683	826	1,509	683	826	281
BARANGAY 638	1,131	480	651	1,050	432	618	189
BARANGAY 639	1,226	551	675	1,223	548	675	233
BARANGAY 640	2,596	1,087	1,509	2,582	1,080	1,502	421
BARANGAY 641	1,045	476	569	1,013	476	537	208

TOTAL AND PRIVATE HOUSEHOLD POPULATION BY SEX AND NUMBER OF PRIVATE HOUSEHOLDS
BY PROVINCES, MUNICIPALITY AND BARANGAY, 1980 - CONTINUED

(Total population includes the population of private households and collective households.)

CITY, MUNICIPALITY AND BARANGAY	TOTAL POPULATION		PRIVATE HOUSEHOLD POPULATION		NUMBER OF PRIVATE HOUSEHOLDS		
	BOTH SEXES	MALE	FEMALE	BOTH SEXES		MALE	FEMALE
ERMITA							
BARANGAY 659	7,347	3,296	4,053	5,981	2,126	3,255	1,115
BARANGAY 659-A	1,697	750	947	1,354	625	729	253
BARANGAY 660-A	366	172	194	319	149	170	56
BARANGAY 661	545	247	298	464	195	269	73
BARANGAY 666	669	296	373	669	296	373	116
BARANGAY 667	696	306	390	399	209	190	76
BARANGAY 668	622	298	324	559	256	303	128
BARANGAY 669	533	237	296	513	226	287	109
BARANGAY 670	330	168	162	331	168	162	63
BARANGAY 663-A	574	282	292	457	210	247	89
BARANGAY 663-A	860	328	472	787	325	462	132
BARANGAY 664	395	143	252	23	13	10	4
BARANGAY 664	120	67	53	107	54	53	16
INTRAMURCS							
BARANGAY 654	2,395	1,249	1,146	2,222	1,112	1,110	539
BARANGAY 655	607	319	288	583	292	288	161
BARANGAY 656	491	244	247	475	234	241	102
BARANGAY 657	465	280	185	399	216	183	103
BARANGAY 658	157	79	78	157	79	78	34
BARANGAY 658	675	327	348	611	291	320	135
MALATE							
BARANGAY 689	89,490	42,124	47,366	88,867	41,977	46,890	16,512
BARANGAY 690	1,266	576	690	1,266	576	690	217
BARANGAY 691	861	398	463	856	394	462	146
BARANGAY 692	729	342	387	713	333	380	132
BARANGAY 692	1,424	657	767	1,424	657	767	242

**TOTAL AND PRIVATE HOUSEHOLD POPULATION BY SEX AND NUMBER OF PRIVATE HOUSEHOLDS
BY PROVINCE, MUNICIPALITY AND BARANGAY, 1980 - CONTINUED**

(Total population includes the population of private households and collective households.)

CITY, MUNICIPALITY AND BARANGAY	TOTAL POPULATION				PRIVATE HOUSEHOLD POPULATION				NUMBER OF PRIVATE HOUSEHOLDS				
	BOTH SEXES		MALE		FEMALE		BOTH SEXES			MALE		FEMALE	
BARANGAY 693	868	362	506	832	356	476	148						
BARANGAY 694	1,839	741	1,098	1,712	728	984	356						
BARANGAY 695	1,440	636	804	1,418	632	786	258						
BARANGAY 696	910	359	551	893	343	550	173						
BARANGAY 697	1,436	541	895	1,362	541	821	254						
BARANGAY 698	1,381	586	795	1,381	586	795	252						
BARANGAY 699	1,284	569	715	1,269	566	703	284						
BARANGAY 700	359	137	222	359	137	222	64						
BARANGAY 701	1,478	633	845	1,439	629	810	314						
BARANGAY 702	2,950	1,387	1,563	2,959	1,387	1,563	566						
BARANGAY 703	425	199	226	425	199	226	89						
BARANGAY 704	4,124	2,098	2,026	4,124	2,098	2,026	681						
BARANGAY 705	2,271	1,048	1,223	2,271	1,048	1,223	418						
BARANGAY 706	452	212	240	447	212	228	75						
BARANGAY 707	946	469	477	946	469	477	182						
BARANGAY 708	1,328	662	666	1,328	662	666	242						
BARANGAY 709	845	365	480	832	352	480	145						
BARANGAY 710	831	385	446	831	385	446	126						
BARANGAY 711	1,385	664	721	1,372	659	713	249						
BARANGAY 712	1,296	659	637	1,296	659	637	230						
BARANGAY 713	1,259	659	600	1,259	659	600	231						
BARANGAY 714	1,079	518	561	1,079	518	561	186						
BARANGAY 715	449	215	234	449	215	234	90						
BARANGAY 716	590	289	301	590	289	301	107						
BARANGAY 717	548	271	277	548	271	277	92						
BARANGAY 718	1,445	734	711	1,445	734	711	217						
BARANGAY 719	1,310	550	760	1,200	518	682	232						
BARANGAY 720	649	319	330	649	319	330	131						
BARANGAY 721	1,517	769	748	1,516	768	748	299						
BARANGAY 722	1,497	693	804	1,482	683	799	282						
BARANGAY 723	922	416	506	922	416	506	169						
BARANGAY 724	2,403	1,055	1,348	2,403	1,055	1,348	427						
BARANGAY 725	357	137	220	357	137	220	63						
BARANGAY 726	1,170	461	709	1,117	461	709	203						
BARANGAY 727	1,196	489	708	1,164	488	676	219						

**TOTAL AND PRIVATE HOUSEHOLD POPULATION BY SEX AND NUMBER OF PRIVATE HOUSEHOLDS
BY PROVINCE, MUNICIPALITY AND BARANGAY, 1990 - CONTINUED**

(Total population includes the population of private households and collective households.)

CITY, MUNICIPALITY AND BARANGAY	TOTAL POPULATION		PRIVATE HOUSEHOLD POPULATION		NUMBER OF PRIVATE HOUSEHOLDS		
	BOTH SEXES	MALE	FEMALE	BOTH SEXES		MALE	FEMALE
BARANGAY 728	840	395	445	810	395	415	151
BARANGAY 729	791	347	444	779	342	437	134
BARANGAY 730	2,385	1,080	1,305	2,374	1,074	1,300	469
BARANGAY 731	2,768	1,281	1,487	2,768	1,281	1,487	534
BARANGAY 732	2,975	1,435	1,540	2,975	1,435	1,540	566
BARANGAY 733	4,515	2,195	2,320	4,515	2,195	2,320	833
BARANGAY 738	3,213	1,630	1,583	3,213	1,630	1,583	621
BARANGAY 739	2,559	1,287	1,272	2,559	1,287	1,272	501
BARANGAY 740	4,009	1,961	2,048	4,009	1,961	2,048	725
BARANGAY 741	2,664	1,347	1,317	2,664	1,347	1,317	505
BARANGAY 742	708	334	374	708	334	374	144
BARANGAY 743	2,434	1,141	1,293	2,434	1,141	1,293	464
BARANGAY 744	1,491	669	822	1,483	665	815	264
BARANGAY 688	1,927	871	1,056	1,915	859	1,056	334
BARANGAY 735	2,542	1,306	1,236	2,542	1,306	1,236	474
BARANGAY 736	2,690	1,354	1,336	2,690	1,354	1,336	471
BARANGAY 737	2,460	1,232	1,228	2,460	1,232	1,228	479
PACD							
BARANGAY 662	72,051	34,243	37,808	71,356	33,885	37,471	12,861
BARANGAY 664-A	1,694	857	837	1,694	857	837	300
BARANGAY 671	1,289	612	677	993	408	582	162
BARANGAY 672	880	375	505	88	375	505	145
BARANGAY 673	1,832	874	958	1,803	871	932	314
BARANGAY 674	2,892	1,319	1,573	2,866	1,307	1,559	523
BARANGAY 675	1,658	739	919	1,629	736	893	267
BARANGAY 676	1,324	601	723	1,324	601	723	236
BARANGAY 677	1,394	599	795	1,366	590	776	244
BARANGAY 678	959	455	504	946	449	497	177
BARANGAY 679	827	368	459	827	368	459	144
BARANGAY 680	1,229	548	681	1,225	544	681	213
BARANGAY 681	1,612	724	888	1,612	724	888	248
BARANGAY 682	1,674	768	906	1,674	768	906	304
BARANGAY 683	1,249	545	704	1,164	510	654	202
	771	356	415	771	356	415	125

TOTAL AND PRIVATE HOUSEHOLD POPULATION BY SEX AND NUMBER OF PRIVATE HOUSEHOLDS
BY PROVINCE, MUNICIPALITY AND BARANGAY: 1980 - CONTINUED

(Total population includes the population of private households and collective households.)

CITY, MUNICIPALITY AND BARANGAY	TOTAL POPULATION		PRIVATE HOUSEHOLD POPULATION		NUMBER OF PRIVATE HOUSEHOLDS		
	BOTH SEXES	MALE	FEMALE	BOTH SEXES		MALE	FEMALE
BARANGAY 685	1,846	802	1,044	1,846	799	1,041	292
BARANGAY 734	807	400	407	807	400	407	156
BARANGAY 809	972	488	484	972	488	484	155
BARANGAY 810	1,934	937	997	1,934	937	997	328
BARANGAY 811	1,284	631	653	1,284	631	653	232
BARANGAY 812	2,180	991	1,189	2,179	990	1,189	377
BARANGAY 813	1,741	799	942	1,735	794	941	305
BARANGAY 814	1,908	946	962	1,908	946	962	366
BARANGAY 815	2,045	992	1,053	2,045	992	1,053	380
BARANGAY 816	754	350	404	729	350	379	150
BARANGAY 817	926	437	489	926	437	489	155
BARANGAY 818	622	290	332	622	290	332	109
BARANGAY 818-A	1,073	515	558	1,073	515	558	195
BARANGAY 819	2,591	1,252	1,339	2,591	1,252	1,339	445
BARANGAY 820	1,764	841	923	1,764	841	923	302
BARANGAY 821	1,759	883	876	1,743	867	876	323
BARANGAY 822	1,619	799	829	1,619	790	829	304
BARANGAY 823	2,339	1,201	1,138	2,339	1,201	1,138	44
BARANGAY 824	1,846	935	911	1,846	935	911	346
BARANGAY 825	831	414	417	831	414	417	163
BARANGAY 826	2,259	1,101	1,158	2,253	1,101	1,157	426
BARANGAY 827	2,126	1,072	1,054	2,126	1,070	1,050	430
BARANGAY 828	1,579	753	826	1,579	753	826	292
BARANGAY 829	2,815	1,388	1,427	2,812	1,388	1,424	557
BARANGAY 830	143	53	90	143	53	90	26
BARANGAY 831	680	311	369	662	303	359	103
BARANGAY 832	1,771	830	941	1,771	830	941	297
BARANGAY 833	2,982	1,446	1,536	2,945	1,434	1,511	528
BARANGAY 836	2,231	1,029	1,202	2,231	1,029	1,202	394
PANDACAN	79,135	38,761	40,374	79,042	38,703	40,339	14,463
BARAVGAY 833	2,329	1,123	1,206	2,324	1,120	1,204	441
BARAVGAY 834	1,387	682	705	1,387	682	705	229
BARAVGAY 835	2,339	1,139	1,200	2,332	1,139	1,193	420
BARAVGAY 836	2,110	1,086	1,024	2,110	1,086	1,024	376

**TOTAL AND PRIVATE HOUSEHOLD POPULATION BY SEX AND NUMBER OF PRIVATE HOUSEHOLDS
BY PROVINCE, MUNICIPALITY AND BARANGAY, 1980 - CONTINUED**

(Total population includes the population of private households and collective households.)

CITY, MUNICIPALITY AND BARANGAY	TOTAL POPULATION		PRIVATE HOUSEHOLD POPULATION		NUMBER OF PRIVATE HOUSEHOLDS		
	BOTH SEXES	MALE	FEMALE	BOTH SEXES		MALE	FEMALE
BARANGAY 837	3,119	1,526	1,592	3,118	1,526	1,592	526
BARANGAY 838	3,414	1,695	1,719	3,414	1,695	1,719	673
BARANGAY 839	3,229	1,629	1,600	3,173	1,585	1,588	605
BARANGAY 840	1,633	808	825	1,633	808	825	275
BARANGAY 841	3,283	1,528	1,755	3,283	1,528	1,755	554
BARANGAY 842	2,247	1,151	1,096	2,247	1,151	1,096	399
BARANGAY 843	4,382	2,223	2,159	4,382	2,223	2,159	837
BARANGAY 844	3,190	1,635	1,555	3,190	1,635	1,555	566
BARANGAY 845	1,872	911	971	1,872	901	971	352
BARANGAY 846	1,977	990	987	1,977	990	987	363
BARANGAY 847	2,200	1,082	1,118	2,200	1,082	1,118	433
BARANGAY 848	2,685	1,254	1,435	2,684	1,249	1,435	485
BARANGAY 849	1,749	912	837	1,749	912	837	327
BARANGAY 850	1,426	717	709	1,426	717	709	237
BARANGAY 851	839	389	454	839	389	454	156
BARANGAY 852	527	261	266	527	261	266	93
BARANGAY 853	546	283	263	546	283	263	105
BARANGAY 855	1,618	773	848	1,617	769	848	342
BARANGAY 856	1,877	878	999	1,877	878	999	359
BARANGAY 857	1,719	813	906	1,719	813	906	293
BARANGAY 858	840	369	471	84	369	471	143
BARANGAY 859	2,651	1,299	1,352	2,651	1,299	1,352	506
BARANGAY 860	2,040	983	1,057	2,040	980	1,060	363
BARANGAY 861	1,641	778	863	1,630	772	857	279
BARANGAY 862	2,304	1,139	1,165	2,300	1,139	1,161	415
BARANGAY 863	2,348	1,274	1,074	2,348	1,274	1,074	413
BARANGAY 864	1,451	698	753	1,439	694	745	26
BARANGAY 865	2,896	1,467	1,429	2,896	1,467	1,429	529
BARANGAY 867	2,551	1,272	1,279	2,551	1,272	1,279	463
BARANGAY 868	2,811	1,420	1,391	2,800	1,420	1,381	527
BARANGAY 870	1,861	875	986	1,861	875	986	386
BARANGAY 871	1,789	907	882	1,785	907	882	321
BARANGAY 872	2,270	1,112	1,158	2,270	1,112	1,158	418
PORT AREA	1,053	533	520	1,046	526	523	231

**TOTAL AND PRIVATE HOUSEHOLD POPULATION BY SEX AND NUMBER OF PRIVATE HOUSEHOLDS
BY PROVINCE, MUNICIPALITY AND BARANGAY: 1980 - CONTINUED**

(Total population includes the population of private households and collective households.)

CITY, MUNICIPALITY AND BARANGAY	TOTAL POPULATION				PRIVATE HOUSEHOLD POPULATION				NUMBER OF PRIVATE HOUSEHOLDS
	BOTH SEXES	MALE	FEMALE		BOTH SEXES	MALE	FEMALE		
BARANGAY 649	479	250	229		479	250	229	111	
BARANGAY 650	311	150	161		311	150	161	71	
BARANGAY 651	120	58	62		120	58	62	23	
BARANGAY 652	54	32	22		54	32	22	11	
BARANGAY 653	89	43	46		82	36	46	15	
STA. ANA	167,159	80,044	87,115		166,772	79,805	86,967	30,780	
BARANGAY 745	1,271	649	622		1,271	649	622	246	
BARANGAY 746	1,900	929	971		1,897	926	971	341	
BARANGAY 747	452	200	252		452	200	252	85	
BARANGAY 748	856	391	465		856	391	465	151	
BARANGAY 749	472	235	237		472	235	237	89	
BARANGAY 750	1,338	646	692		1,338	646	692	240	
BARANGAY 751	2,171	1,054	1,117		2,171	1,054	1,117	387	
BARANGAY 752	830	362	468		830	362	468	143	
BARANGAY 753	1,652	811	841		1,652	811	841	318	
BARANGAY 755	1,205	555	650		1,205	555	650	224	
BARANGAY 756	1,070	392	678		1,070	392	678	195	
BARANGAY 757	417	173	244		417	173	244	79	
BARANGAY 758	117	54	63		117	54	63	22	
BARANGAY 759	865	366	499		865	366	499	151	
BARANGAY 760	830	360	470		830	360	470	140	
BARANGAY 761	918	376	542		918	376	542	164	
BARANGAY 762	705	298	407		655	258	397	107	
BARANGAY 763	2,448	1,140	1,308		2,448	1,140	1,308	437	
BARANGAY 764	2,238	1,057	1,181		2,238	1,057	1,181	432	
BARANGAY 765	1,537	740	797		1,537	740	797	255	
BARANGAY 766	2,443	1,162	1,281		2,443	1,162	1,281	463	
BARANGAY 767	2,941	1,454	1,487		2,941	1,454	1,487	582	
BARANGAY 768	2,011	958	1,053		2,011	958	1,053	341	
BARANGAY 769	1,492	679	813		1,492	679	813	271	
BARANGAY 770	3,235	1,585	1,650		3,235	1,585	1,650	627	
BARANGAY 771	1,605	732	873		1,592	721	871	286	
BARANGAY 772	2,724	1,371	1,353		2,724	1,371	1,353	530	
BARANGAY 773	2,118	1,040	1,078		2,118	1,040	1,078	426	

TOTAL AND PRIVATE HOUSEHOLD POPULATION BY SEX AND NUMBER OF PRIVATE HOUSEHOLDS
BY PROVINCE, MUNICIPALITY AND BARANGAY: 1960 - CONTINUED

(Total population includes the population of private households and collective households.)

CITY, MUNICIPALITY AND BARANGAY	TOTAL POPULATION		PRIVATE HOUSEHOLD POPULATION		NUMBER OF PRIVATE HOUSEHOLDS		
	BOTH SEXES	MALE	FEMALE	BOTH SEXES		MALE	FEMALE
BARANGAY 774	3,218	1,613	1,605	3,218	1,613	1,605	597
BARANGAY 775	4,070	2,064	2,006	4,070	2,064	2,006	744
BARANGAY 776	2,831	1,412	1,419	2,831	1,412	1,419	591
BARANGAY 777	2,193	1,095	1,098	2,193	1,095	1,098	382
BARANGAY 778	1,909	952	957	1,909	952	957	359
BARANGAY 779	2,395	1,199	1,196	2,395	1,199	1,196	483
BARANGAY 780	2,576	1,243	1,333	2,570	1,243	1,327	480
BARANGAY 781	2,269	1,118	1,151	2,269	1,118	1,151	402
BARANGAY 782	1,658	886	972	1,658	886	972	328
BARANGAY 783	1,269	577	692	1,269	577	692	242
BARANGAY 784	4,842	2,382	2,460	4,842	2,382	2,460	964
BARANGAY 785	968	471	497	968	471	497	183
BARANGAY 786	1,764	838	926	1,751	838	913	296
BARANGAY 787	2,366	1,136	1,230	2,366	1,136	1,230	424
BARANGAY 788	918	447	471	918	447	471	163
BARANGAY 789	1,898	920	978	1,898	920	978	324
BARANGAY 790	1,734	812	922	1,734	812	922	322
BARANGAY 791	1,804	849	955	1,804	849	955	346
BARANGAY 792	2,448	1,186	1,262	2,448	1,186	1,262	492
BARANGAY 793	2,191	1,046	1,145	2,191	1,046	1,145	419
BARANGAY 794	1,059	510	549	1,059	510	549	183
BARANGAY 795	385	194	191	385	194	191	68
BARANGAY 796	1,391	702	689	1,391	702	689	240
BARANGAY 797	693	334	359	693	334	359	134
BARANGAY 798	1,908	901	907	1,908	901	907	342
BARANGAY 799	537	238	299	537	238	299	102
BARANGAY 800	988	507	481	988	507	481	198
BARANGAY 801	1,207	544	663	1,207	544	663	216
BARANGAY 802	1,256	607	649	1,256	607	649	235
BARANGAY 803	2,218	1,016	1,202	2,218	1,016	1,202	451
BARANGAY 804	1,853	878	975	1,853	878	975	351
BARANGAY 805	1,009	452	557	1,009	452	557	178
BARANGAY 806	1,591	735	856	1,591	735	856	316
BARANGAY 807	1,231	525	706	1,231	525	706	215
BARANGAY 866	1,926	854	1,072	1,926	854	1,072	353

TOTAL AND PRIVATE HOUSEHOLD POPULATION BY SEX AND NUMBER OF PRIVATE HOUSEHOLDS
BY PROVINCE, MUNICIPALITY AND BARANGAY: 1980 - CONTINUED

(Total population includes the population of private households and collective households.)

CITY, MUNICIPALITY AND BARANGAY	TOTAL POPULATION		PRIVATE HOUSEHOLD POPULATION		NUMBER OF PRIVATE HOUSEHOLDS		
	BOTH SEXES	MALE	FEMALE	BOTH SEXES		MALE	FEMALE
BARANGAY 869	1,610	753	857	1,610	753	857	292
BARANGAY 873	1,494	699	795	1,494	699	795	253
BAPANGAY 874	1,872	853	1,019	1,872	853	1,017	315
BARANGAY 875	1,377	609	768	1,377	609	768	235
BARANGAY 876	883	405	478	843	382	461	142
BARANGAY 877	2,332	1,060	1,272	2,332	1,060	1,272	446
BARANGAY 878	1,409	656	753	1,409	656	753	242
BARANGAY 879	836	428	418	773	361	412	147
BARANGAY 880	1,060	515	545	1,024	479	545	175
BAPANGAY 881	2,990	1,413	1,577	2,990	1,413	1,577	535
BARANGAY 882	1,515	691	824	1,515	691	819	284
BARANGAY 883	2,473	1,188	1,285	2,462	1,180	1,282	445
BAPANGAY 884	2,431	1,103	1,328	2,411	1,091	1,320	421
BARANGAY 885	566	241	325	555	234	321	110
BARANGAY 886	703	338	365	628	322	308	114
BAFANGAY 887	928	459	469	889	435	454	146
BARANGAY 888	1,414	680	734	1,414	680	734	227
BARANGAY 889	1,396	646	750	1,396	646	750	248
BARANGAY 890	1,417	719	698	1,417	719	698	276
BARANGAY 891	871	429	442	871	429	442	174
BARANGAY 892	1,410	633	777	1,410	633	777	252
BARANGAY 893	1,230	612	618	1,230	612	618	221
BARANGAY 894	1,806	907	899	1,806	907	899	317
BARANGAY 895	1,259	622	637	1,259	622	637	237
BARANGAY 896	1,062	519	543	1,062	519	543	213
BARANGAY 897	2,264	1,107	1,157	2,264	1,107	1,157	413
BARANGAY 898	2,762	1,343	1,419	2,762	1,343	1,419	496
BARANGAY 899	1,143	574	569	1,143	574	569	218
BARANGAY 900	1,200	602	598	1,200	602	598	248
BARANGAY 901	2,154	1,075	1,079	2,154	1,075	1,079	342
BARANGAY 902	2,157	1,016	1,141	2,157	1,016	1,141	345
BAPANGAY 903	2,956	1,491	1,465	2,956	1,491	1,465	567
BARANGAY 904	3,641	1,831	1,810	3,641	1,831	1,810	702
BARANGAY 905	1,560	790	770	1,560	790	770	283
BAPANGAY 754	2,336	1,196	1,140	2,336	1,196	1,140	448

TOTAL AND PRIVATE HOUSEHOLD POPULATION BY SEX AND NUMBER OF PRIVATE HOUSEHOLDS
BY PROVINCE, MUNICIPALITY AND BARANGAY, 1960 - CONTINUED
(Total population includes the population of private households and collective households.)

CITY, MUNICIPALITY AND BARANGAY	TOTAL POPULATION		PRIVATE HOUSEHOLD POPULATION		NUMBER OF PRIVATE HOUSEHOLDS		
	BOTH SEXES	MALE	FEMALE	BOTH SEXES		MALE	FEMALE
BARANGAY 808	2,208	1,039	1,169	2,208	1,039	1,169	396
QUEZON CITY	1,165,865	553,224	612,641	1,159,317	549,823	609,494	218,446
ALICIA	5,146	2,539	2,607	5,146	2,539	2,607	961
AMIHAN	5,854	2,649	3,205	5,854	2,649	3,205	1,038
APOLINIO SAMSON	18,948	9,328	9,620	18,948	9,328	9,620	3,706
AURORA	6,933	3,205	3,728	6,933	3,205	3,728	1,403
BAESA	22,333	11,174	11,159	22,225	11,118	11,107	4,442
BAGBAG	14,141	7,167	6,974	14,141	7,167	6,974	2,763
BAGJIMBUHAY	7,319	3,294	4,025	7,305	3,294	4,011	1,265
BAGONG LIPUNAN NG CLAYE	13,942	6,634	7,308	13,788	6,510	7,278	2,581
BAGONG PAG-ASA	17,214	8,252	8,962	17,209	8,247	8,961	3,144
BAGONG SILANGAY	5,131	2,620	2,511	5,131	2,620	2,511	976
BAGUMBAYAN	3,174	1,619	1,555	3,174	1,619	1,555	674
BAHAY TORO	27,646	12,982	14,664	27,535	12,902	14,633	4,986
BALIWGASA	17,520	8,771	8,749	17,499	8,758	8,741	3,276
BAYANIHAN	2,425	1,178	1,247	2,425	1,178	1,247	466
BLUE RIDGE A	1,359	602	757	1,359	602	757	229
BLUE RIDGE B	1,343	600	743	1,343	600	743	205
BOTOCAN	2,389	1,214	1,175	2,389	1,214	1,175	420
BUNGAD	10,109	4,770	5,339	10,077	4,743	5,334	1,884
CAMP AGUINALDO	3,796	1,796	2,000	3,796	1,796	2,000	686
CENTRAL	6,210	2,744	3,466	6,201	2,742	3,459	1,181
CLARO	4,570	2,097	2,473	4,570	2,097	2,473	846
COMMONWEALTH	14,000	7,082	6,918	14,000	7,082	6,918	2,803
CONSTITUTION HILLS	2,242	1,188	1,054	2,193	1,141	1,052	448
KRISTONG HARI	2,976	1,491	1,485	2,744	1,313	1,431	507
CULLIAT	16,458	7,943	8,515	16,399	7,890	8,509	2,959
DAMA?	1,811	690	1,121	1,811	690	1,121	234
DAMAYAN	9,169	4,484	4,685	9,164	4,479	4,685	1,721
DAMAYANG LAGI	8,919	4,137	4,682	8,806	4,135	4,671	1,603
DEL MONTE	12,287	5,851	6,436	12,170	5,773	6,397	2,277
DIOQUINO ZOBEL	1,362	670	692	1,362	670	692	271
DONA INELDA	8,611	4,256	4,361	7,772	3,724	4,048	1,402
DONA JOSEFA	3,763	1,672	2,091	3,746	1,672	2,074	669

**TOTAL AND PRIVATE HOUSEHOLD POPULATION BY SEX AND NUMBER OF PRIVATE HOUSEHOLDS
BY PROVINCE, MUNICIPALITY AND BARANGAY: 1990 - CONTINUED**

(Total population includes the population of private households and collective households.)

CITY, MUNICIPALITY AND BARANGAY	TOTAL POPULATION		PRIVATE HOUSEHOLD POPULATION		NUMBER OF PRIVATE HOUSEHOLDS		
	BOTH SEXES	MALE	FEMALE	BOTH SEXES		MALE	FEMALE
DUN MANUEL	5,435	2,337	3,098	5,406	2,327	3,079	1,086
DUYAN-DUYAN	4,484	2,130	2,354	4,484	2,130	2,354	835
E. RIZOR IGUEZ	17,258	7,738	9,520	17,118	7,682	9,436	3,298
EAST KANIAS	6,590	3,015	3,575	6,562	2,996	3,566	1,187
ESCOPA I	1,746	893	853	1,746	893	853	346
ESCOPA II	2,713	1,364	1,349	2,713	1,364	1,349	589
ESCOPA III	1,894	968	926	1,894	968	926	425
ESCOPA IV	2,301	1,176	1,125	2,301	1,176	1,125	503
FAIRVIEW	13,684	6,235	7,449	13,677	6,226	7,444	2,218
GINTONG SILANIS	8,443	4,037	4,406	8,443	4,037	4,406	1,659
GULOJ	16,184	8,006	8,178	16,184	8,006	8,178	3,078
HORSESHOE	3,640	1,649	1,991	3,594	1,620	1,974	611
IMMACULATE CONCEPCION	9,944	4,649	5,295	9,740	4,600	5,140	1,922
KALIGAYAHAN	3,349	1,692	1,657	3,336	1,679	1,657	638
KALJUSUGAN	1,952	892	1,060	1,867	892	975	338
KAMUING	16,823	7,972	8,851	16,351	7,540	8,811	3,122
KATIPOUNAN	2,559	1,263	1,296	2,559	1,263	1,296	702
KAUUNLARAN	8,162	3,759	4,403	7,966	3,741	4,225	1,671
KRUS NA LIGAS	5,405	2,717	2,688	5,405	2,717	2,688	1,140
LAGING HANDA	8,727	3,786	4,941	8,714	3,786	4,928	1,560
LIRIS	5,529	2,776	2,753	5,529	2,776	2,753	1,107
LOURDES	5,388	2,289	3,099	5,052	2,168	2,882	961
LOYOLA HEIGHTS	5,914	2,725	3,189	5,699	2,510	3,189	1,112
MAHAPLIKA	6,670	2,989	3,681	6,667	2,979	3,681	1,205
MALAYA	5,221	2,531	2,690	5,221	2,531	2,690	964
MANRESA	10,234	4,685	5,549	10,179	4,679	5,500	1,806
MANGGA	1,270	568	632	1,148	562	586	237
MARIANA	9,853	4,299	5,554	9,565	4,241	5,324	1,645
MARIBLO	2,685	1,267	1,418	2,685	1,267	1,418	577
MASAJANA	10,893	4,883	6,010	10,843	4,872	5,971	2,017
MASAYBONG	4,957	2,227	2,730	4,957	2,220	2,737	866
MATALAHIB	11,528	5,608	5,920	11,528	5,608	5,920	2,044
MATAVDANG	9,261	4,254	4,907	9,157	4,266	4,891	1,677
MILASROSA	31,840	16,095	15,745	31,839	16,094	15,745	6,335
	6,946	3,059	3,887	6,892	3,041	3,841	1,303

TOTAL AND PRIVATE HOUSEHOLD POPULATION BY SEX AND NUMBER OF PRIVATE HOUSEHOLDS
BY PROVINCE, MUNICIPALITY AND BARANGAY: 1980 - CONTINUED

(Total population includes the population of private households and collective households.)

CITY, MUNICIPALITY AND BARANGAY	TOTAL POPULATION		PRIVATE HOUSEHOLD POPULATION		NUMBER OF PRIVATE HOUSEHOLDS		
	BOTH SEXES	MALE	FEMALE	BOTH SEXES		MALE	FEMALE
NAGKAISSANG NAYON	8,322	4,169	4,153	8,312	4,159	4,153	1,661
NAYONG KANLURAY	1,480	657	823	1,480	557	823	257
NOVALICHES PROPER	8,641	4,193	4,448	8,631	4,191	4,440	1,583
DBRERO	7,558	3,654	3,904	7,558	3,654	3,904	1,454
OLD CAPITOL SITE	912	438	474	912	438	474	156
PAANG BUNDOK	8,783	4,231	4,472	8,651	4,224	4,427	1,545
PAG-IBIG SA NAYON	6,261	3,078	3,183	6,260	3,078	3,182	1,152
PALIGSAHAN	4,147	1,738	2,409	4,088	1,713	2,375	779
PALTOK	19,717	9,571	10,146	19,688	9,549	10,139	3,636
PANSOL	9,355	4,554	4,801	9,355	4,554	4,801	1,680
PARAISO	5,382	2,480	2,902	5,382	2,480	2,902	1,011
PASONG PUTIK	17,473	8,176	9,297	17,433	8,146	9,287	3,211
PASONG TAMO	8,008	4,088	3,920	8,008	4,088	3,920	1,671
PHIL-AM	4,108	1,685	2,423	4,065	1,662	2,403	584
PINYAHAN	19,366	8,967	10,393	19,115	8,919	10,223	3,564
PINAKAISAHAN	8,643	3,852	4,791	8,622	3,852	4,770	1,562
PROJECT 6	14,206	6,274	7,932	14,171	6,253	7,917	2,457
QUIRINO 2-A	5,328	2,377	2,951	5,328	2,377	2,951	947
QUIRINO 2-B	4,673	2,189	2,584	4,643	2,066	2,577	841
QUIRINO 2-C	3,021	1,387	1,634	3,021	1,387	1,634	552
QUIRINO 3-A	1,939	890	1,049	1,915	882	1,033	355
RAMON MAGSAYSAY	17,881	8,776	9,105	17,836	8,735	9,101	3,275
ROXAS	14,013	6,357	7,656	14,013	6,357	7,656	2,606
SACRED HEART	10,418	4,548	5,870	10,325	4,511	5,814	1,941
ST. IGNATIUS	2,644	1,161	1,483	2,644	1,161	1,483	412
ST. PETER	6,984	3,077	3,907	6,984	3,077	3,907	1,181
SALVACION	12,207	5,721	6,486	12,207	5,721	6,486	2,426
SAN AGUSTIN	7,360	3,746	3,614	7,345	3,746	3,599	1,396
SAN ANTONIO	19,116	9,231	9,885	19,047	9,194	9,855	3,989
SAN BARTOLOME	15,068	7,613	7,395	15,003	7,610	7,393	2,844
SAN ISIDRO	9,715	4,606	5,109	9,715	4,606	5,109	1,822
SAN ISIDRO LABRADOR	10,260	4,628	5,632	10,260	4,628	5,632	1,892
SAN JOSE	9,387	4,447	4,980	9,382	4,405	4,977	1,712
SAN MARTIN DE PORRES	10,174	5,027	5,147	10,174	5,027	5,147	2,045
SAN ROQUE	26,431	12,630	13,801	26,431	12,630	13,801	5,033

**TOTAL AND PRIVATE HOUSEHOLD POPULATION BY SEX AND NUMBER OF PRIVATE HOUSEHOLDS
BY PROVINCE, MUNICIPALITY AND BARANGAY, 1960 - CONTINUED**

(Total population includes the population of private households and collective households.)

CITY, MUNICIPALITY AND BARANGAY	TOTAL POPULATION		PRIVATE HOUSEHOLD POPULATION		NUMBER OF PRIVATE HOUSEHOLDS		
	POPULATION		HOUSEHOLD				
	BOTH SEXES	MALE	FEMALE	BOTH SEXES		MALE	FEMALE
SAN VICENTE	3,269	1,609	1,660	3,269	1,609	1,660	595
STA. CRUZ	3,729	1,656	2,073	3,689	1,644	2,045	649
STA. LUCIA	5,272	2,708	2,564	5,272	2,708	2,564	978
STA. MONICA	8,080	3,863	4,217	8,080	3,863	4,217	1,462
STA. TERESITA	10,901	5,093	5,808	10,868	5,090	5,778	2,268
STO. CRISTO	8,757	4,332	4,425	8,757	4,332	4,425	1,559
SANTO NINO	12,344	5,777	6,567	12,344	5,777	6,567	2,435
SANTOL	8,756	4,046	4,710	8,722	4,038	4,684	1,678
SAUYO	4,631	2,307	2,324	4,631	2,307	2,324	865
SIENNA	5,891	2,528	3,363	5,822	2,523	3,299	954
SIKATUNA VILLAGE	6,043	2,751	3,292	6,023	2,731	3,292	991
SILANGAN	6,395	2,863	3,532	6,358	2,861	3,497	1,218
SOCORRO	26,812	12,233	14,579	26,800	12,223	14,577	5,355
SOUT-1 TRIANGLE	9,068	4,309	4,759	9,068	4,309	4,759	1,792
TAGUMPAY	2,621	1,322	1,299	2,572	1,274	1,298	555
TALAYAN	2,964	1,267	1,697	2,964	1,267	1,697	428
TALIPAPA	13,100	6,326	6,774	13,100	6,326	6,774	2,652
TANDANG SORA	13,298	6,405	6,893	13,276	6,383	6,893	2,378
FATALDM	23,895	11,909	11,985	23,826	11,857	11,969	4,561
TEACHERS VILLAGE (E)	2,321	999	1,322	2,321	999	1,322	387
TEACHERS VILLAGE (M)	4,172	1,854	2,318	4,141	1,850	2,291	659
U.P. CAMPUS	13,407	6,392	7,015	12,452	5,968	6,484	2,236
U.P. VILLAGE	4,237	1,807	2,430	4,214	1,791	2,423	718
UGONG NORTE	1,097	531	566	1,097	531	566	219
UNANG SIGAW	8,140	4,137	4,003	8,141	4,137	4,003	1,876
VALENCIA	4,689	2,221	2,468	4,663	2,216	2,447	872
VASRA	2,940	1,371	1,569	2,940	1,371	1,569	504
VETERANS VILLAGE	13,392	6,105	7,287	13,385	6,099	7,286	2,865
VILLA MARIA CLARA	2,518	1,151	1,367	2,518	1,151	1,367	439
WEST KAMIAS	3,624	2,583	3,041	5,624	2,582	3,041	1,018
WEST TRIANGLE	4,322	1,816	2,506	4,291	1,802	2,489	638
WHITE PLAINS	2,479	1,032	1,447	2,479	1,032	1,447	382
BALONG BATO	7,170	3,505	3,665	7,170	3,505	3,665	1,403
CAPRI (SPECIAL)	7,153	3,662	3,491	7,153	3,662	3,491	1,388
SANGANDAAN	16,710	8,087	8,623	16,710	8,087	8,623	3,064

**TOTAL AND PRIVATE HOUSEHOLD POPULATION BY SEX AND NUMBER OF PRIVATE HOUSEHOLDS
BY PROVINCE, MUNICIPALITY AND BARANGAY, 1990 - CONTINUED**

(Total population includes the population of private households and collective households.)

CITY, MUNICIPALITY AND BARANGAY	TOTAL POPULATION		PRIVATE HOUSEHOLD POPULATION		NUMBER OF PRIVATE HOUSEHOLDS		
	BOTH SEXES	MALE	FEMALE	BOTH SEXES		MALE	FEMALE
PAVATAS	2,421	1,281	1,140	2,366	1,226	1,140	513
CALDOGAN CITY	467,816	230,946	236,870	466,135	229,936	236,199	89,366
BARANGAY 1	2,786	1,369	1,417	2,786	1,369	1,417	519
BARANGAY 2	4,445	2,222	2,223	4,445	2,222	2,223	816
BARANGAY 3	2,674	1,322	1,352	2,674	1,322	1,352	508
BARANGAY 4	3,431	1,658	1,773	3,431	1,658	1,773	663
BARANGAY 5	1,998	946	1,052	1,998	946	1,052	362
BARANGAY 6	1,584	730	854	1,584	730	854	284
BARANGAY 7	2,521	1,249	1,272	2,521	1,249	1,272	494
BARANGAY 8	3,698	1,793	1,905	3,698	1,793	1,905	740
BARANGAY 9	1,692	823	869	1,692	823	869	306
BARANGAY 10	1,663	784	879	1,663	784	879	291
BARANGAY 11	1,851	859	992	1,851	859	992	345
BARANGAY 12	2,968	1,490	1,478	2,968	1,490	1,478	568
BARANGAY 13	1,724	797	927	1,693	782	908	305
BARANGAY 14	1,446	766	680	1,446	766	680	283
BARANGAY 15	1,421	675	746	1,421	675	746	297
BARANGAY 16	1,173	597	576	1,161	585	576	225
BARANGAY 17	2,925	1,398	1,527	2,925	1,398	1,527	613
BARANGAY 18	4,582	2,250	2,332	4,582	2,250	2,332	827
BARANGAY 19	2,820	1,351	1,469	2,820	1,351	1,469	521
BARANGAY 20	2,436	1,197	1,239	2,436	1,197	1,239	494
BARANGAY 21	3,713	1,821	1,892	3,713	1,821	1,892	745
BARANGAY 22	3,695	1,785	1,910	3,695	1,785	1,910	761
BARANGAY 23	2,259	1,098	1,161	2,259	1,098	1,161	541
BARANGAY 24	2,860	1,423	1,437	2,860	1,423	1,437	522
BARANGAY 25	1,914	916	998	1,914	916	998	36
BARANGAY 26	3,841	1,845	1,996	3,841	1,845	1,996	716
BARANGAY 27	3,365	1,656	1,709	3,365	1,656	1,709	652
BARANGAY 28	4,725	2,387	2,338	4,725	2,387	2,338	794
BARANGAY 29	1,735	877	858	1,735	877	858	318
BARANGAY 30	2,420	1,129	1,291	2,420	1,129	1,291	452
BARANGAY 31	3,396	1,712	1,684	3,396	1,712	1,684	626
BARANGAY 32	3,002	1,504	1,498	2,962	1,493	1,469	596

TOTAL AND PRIVATE HOUSEHOLD POPULATION BY SEX AND NUMBER OF PRIVATE HOUSEHOLDS
BY PROVINCE, MUNICIPALITY AND BARANGAY: 1980 - CONTINUED

(Total population includes the population of private households and collective households.)

CITY, MUNICIPALITY AND BARANGAY	TOTAL POPULATION		PRIVATE HOUSEHOLD POPULATION		NUMBER OF PRIVATE HOUSEHOLDS		
	BOTH SEXES	MALE	FEMALE	BOTH SEXES		MALE	FEMALE
BARANGAY 33	5,420	2,689	2,731	5,420	2,689	2,731	1,036
BARANGAY 34	4,355	2,185	2,170	4,355	2,183	2,170	832
BARANGAY 35	3,704	1,883	1,821	3,704	1,883	1,821	696
BARANGAY 36	5,469	2,724	2,745	5,469	2,724	2,745	1,041
BARANGAY 37	4,216	2,075	2,141	4,216	2,075	2,141	826
BARANGAY 38	5,129	2,591	2,538	5,129	2,591	2,538	978
BARANGAY 39	2,079	1,057	1,022	2,079	1,057	1,022	381
BARANGAY 40	1,706	853	853	1,706	853	853	303
BARANGAY 41	1,613	745	868	1,612	744	868	281
BARANGAY 42	1,594	786	808	1,594	786	808	330
BARANGAY 43	3,833	1,867	1,966	3,833	1,867	1,966	776
BARANGAY 44	1,104	554	550	1,104	554	550	236
BARANGAY 45	610	272	338	610	272	338	117
BARANGAY 46	2,105	1,059	1,046	2,105	1,059	1,046	415
BARANGAY 47	808	405	403	808	405	403	155
BARANGAY 48	1,219	583	636	1,219	583	636	252
BARANGAY 49	4,293	2,171	2,122	4,293	2,171	2,122	917
BARANGAY 50	3,220	1,554	1,666	3,220	1,554	1,666	602
BARANGAY 51	1,289	641	648	1,289	641	648	267
BARANGAY 52	3,138	1,530	1,608	3,138	1,530	1,608	586
BARANGAY 53	2,500	1,218	1,282	2,500	1,218	1,282	446
BARANGAY 54	979	496	483	979	496	483	203
BARANGAY 55	2,371	1,109	1,262	2,371	1,109	1,262	487
BARANGAY 56	4,223	2,104	2,119	4,223	2,104	2,119	852
BARANGAY 57	1,442	698	744	1,442	698	744	315
BARANGAY 58	1,243	581	662	1,243	581	662	261
BARANGAY 59	4,933	2,508	2,425	4,933	2,508	2,425	887
BARANGAY 60	2,808	1,358	1,450	2,808	1,358	1,450	491
BARANGAY 61	2,896	1,368	1,528	2,896	1,368	1,528	557
BARANGAY 62	932	430	502	931	429	502	151
BARANGAY 63	3,761	1,841	1,920	3,761	1,841	1,920	745
BARANGAY 64	1,558	747	811	1,558	747	811	310
BARANGAY 65	1,844	915	929	1,844	915	929	335
BARANGAY 66	2,154	1,062	1,092	2,154	1,062	1,092	414
BARANGAY 67	2,526	1,174	1,352	2,526	1,174	1,352	448

**TOTAL AND PRIVATE HOUSEHOLD POPULATION BY SEX AND NUMBER OF PRIVATE HOUSEHOLDS
BY PROVINCE, MUNICIPALITY AND BARANGAY: 1980 - CONTINUED**

(Total population includes the population of private households and collective households.)

CITY, MUNICIPALITY AND BARANGAY	TOTAL POPULATION		PRIVATE HOUSEHOLD POPULATION		NUMBER OF PRIVATE HOUSEHOLDS		
	BOTH SEXES	MALE	BOTH SEXES	FEMALE			
BARANGAY 68	2,305	1,063	1,242	2,263	1,040	1,223	418
BARANGAY 69	3,629	1,787	1,842	3,629	1,787	1,842	674
BARANGAY 70	1,987	968	1,019	1,987	968	1,019	400
BARANGAY 71	1,095	511	584	1,095	511	584	188
BARANGAY 72	176	70	106	176	70	106	48
BARANGAY 73	1,867	930	937	1,867	930	937	372
BARANGAY 74	2,831	1,359	1,472	2,831	1,359	1,472	550
BARANGAY 75	1,910	901	1,009	1,910	901	1,009	353
BARANGAY 76	1,188	583	605	1,188	583	605	237
BARANGAY 77	850	408	442	823	384	439	142
BARANGAY 78	1,831	883	948	1,831	883	948	335
BARANGAY 79	654	320	334	654	320	334	130
BARANGAY 80	1,923	854	1,069	1,923	854	1,069	347
BARANGAY 81	1,575	752	823	1,575	752	823	360
BARANGAY 82	1,628	727	901	1,628	727	901	334
BARANGAY 83	2,326	1,054	1,272	2,326	1,054	1,272	429
BARANGAY 84	1,780	782	998	1,758	781	977	329
BARANGAY 85	1,471	668	803	1,471	668	803	258
BARANGAY 86	1,843	869	974	1,831	864	966	344
BARANGAY 87	2,335	1,095	1,240	2,335	1,095	1,240	434
BARANGAY 88	2,901	1,325	1,576	2,901	1,325	1,576	546
BARANGAY 89	2,947	1,358	1,589	2,947	1,358	1,589	570
BARANGAY 90	3,417	1,595	1,822	3,417	1,595	1,822	652
BARANGAY 91	1,808	842	966	1,808	842	966	342
BARANGAY 92	772	366	406	772	366	406	137
BARANGAY 93	4,088	2,028	2,060	4,088	2,028	2,060	796
BARANGAY 94	1,116	500	616	1,116	500	616	237
BARANGAY 95	2,489	1,224	1,265	2,489	1,224	1,265	465
BARANGAY 96	888	457	431	871	442	429	187
BARANGAY 97	1,955	933	1,022	1,955	933	1,022	342
BARANGAY 98	1,996	974	1,022	1,956	967	989	347
BARANGAY 99	811	368	443	811	368	443	140
BARANGAY 100	1,188	579	609	1,188	579	609	212
BARANGAY 101	1,986	948	1,038	1,986	948	1,038	331
BARANGAY 102	1,554	736	818	1,554	736	818	277

TOTAL AND PRIVATE HOUSEHOLD POPULATION BY SEX AND NUMBER OF PRIVATE HOUSEHOLDS
BY PROVINCE, MUNICIPALITY AND BARANGAY: 1980 - CONTINUED

(Total population includes the population of private households and collective households.)

CITY, MUNICIPALITY AND BARANGAY	TOTAL POPULATION		PRIVATE HOUSEHOLD POPULATION		NUMBER OF PRIVATE HOUSEHOLDS		
	BOTH SEXES	MALE	FEMALE	BOTH SEXES		MALE	FEMALE
BARANGAY 103	816	406	410	816	406	410	159
BARANGAY 104	2,115	1,046	1,069	2,115	1,046	1,069	422
BARANGAY 105	2,780	1,377	1,403	2,780	1,377	1,403	492
BARANGAY 106	1,902	902	1,000	1,902	902	1,000	338
BARANGAY 107	3,369	1,653	1,716	3,369	1,653	1,716	576
BARANGAY 108	1,491	744	751	1,491	740	751	271
BARANGAY 109	2,001	1,010	991	1,956	980	978	384
BARANGAY 110	2,282	380	429	809	380	429	149
BARANGAY 111	1,656	1,680	1,242	2,282	1,080	1,202	395
BARANGAY 112	891	771	885	1,656	771	885	283
BARANGAY 113	1,594	448	443	891	448	443	198
BARANGAY 114	1,524	768	826	1,594	768	826	302
BARANGAY 115	1,827	729	795	1,524	729	795	303
BARANGAY 116	2,777	884	943	1,827	884	943	391
BARANGAY 117	2,169	1,413	1,364	2,777	1,413	1,364	551
BARANGAY 118	1,479	1,067	1,102	2,169	1,067	1,102	400
BARANGAY 119	3,381	719	760	1,479	719	760	284
BARANGAY 120	296	1,684	1,697	3,381	1,684	1,697	616
BARANGAY 121	2,924	137	159	296	137	159	65
BARANGAY 122	2,967	1,475	1,449	2,924	1,475	1,449	594
BARANGAY 123	1,448	1,502	1,465	2,967	1,502	1,465	874
BARANGAY 124	2,074	732	716	1,448	732	716	308
BARANGAY 125	1,888	1,021	1,053	2,074	1,021	1,053	542
BARANGAY 126	2,370	912	976	1,888	912	976	398
BARANGAY 127	1,953	1,134	1,236	2,370	1,134	1,236	606
BARANGAY 128	1,746	859	887	1,953	948	1,005	478
BARANGAY 129	2,844	1,413	1,431	1,746	859	887	346
BARANGAY 130	2,758	1,300	1,458	2,844	1,413	1,431	576
BARANGAY 131	5,162	2,646	2,516	2,758	1,300	1,458	535
BARANGAY 132	4,745	2,357	2,388	5,162	2,646	2,516	953
BARANGAY 133	1,493	726	767	4,745	2,357	2,388	904
BARANGAY 134	870	410	460	1,493	726	767	234
BARANGAY 135	447	216	231	870	410	460	137
BARANGAY 136	1,213	582	631	447	216	231	64
BARANGAY 137	1,213	582	631	1,213	582	631	223

TOTAL AND PRIVATE HOUSEHOLD POPULATION BY SEX AND NUMBER OF PRIVATE HOUSEHOLDS
BY PROVINCE, MUNICIPALITY AND BARANGAY: 1980 - CONTINUED

(Total population includes the population of private households and collective households.)

CITY, MUNICIPALITY AND BARANGAY	TOTAL POPULATION		PRIVATE HOUSEHOLD POPULATION		NUMBER OF PRIVATE HOUSEHOLDS		
	BOTH SEXES	MALE	FEMALE	BOTH SEXES		MALE	FEMALE
BARANGAY 138	1,619	819	800	1,619	819	800	327
BARANGAY 139	2,651	1,308	1,343	2,651	1,308	1,343	497
BARANGAY 140	732	402	330	732	402	330	130
BARANGAY 141	2,449	1,281	1,168	2,449	1,281	1,168	438
BARANGAY 142	3,824	1,972	1,852	3,824	1,972	1,852	682
BARANGAY 143	2,807	1,448	1,359	2,807	1,448	1,359	566
BARANGAY 144	3,542	1,828	1,714	3,542	1,828	1,714	716
BARANGAY 145	3,710	1,824	1,886	3,710	1,824	1,886	684
BARANGAY 146	2,782	1,413	1,372	2,782	1,410	1,372	531
BARANGAY 147	2,706	1,377	1,329	2,706	1,377	1,329	514
BARANGAY 148	3,108	1,614	1,494	3,108	1,614	1,494	619
BARANGAY 149	3,357	1,716	1,641	3,357	1,716	1,641	690
BARANGAY 150	3,358	1,727	1,631	3,358	1,722	1,626	613
BARANGAY 151	3,959	2,042	1,917	3,959	2,042	1,917	773
BARANGAY 152	2,878	1,448	1,430	2,878	1,448	1,430	533
BARANGAY 153	2,532	1,263	1,269	2,532	1,263	1,269	441
BARANGAY 154	3,142	1,581	1,561	3,142	1,581	1,561	562
BARANGAY 155	2,610	1,327	1,283	2,610	1,327	1,283	522
BARANGAY 156	3,953	1,966	1,987	3,953	1,966	1,987	736
BARANGAY 157	1,302	644	658	1,302	644	658	240
BARANGAY 158	1,921	878	1,043	1,921	839	920	345
BARANGAY 159	1,589	773	816	1,589	773	816	301
BARANGAY 160	3,369	1,679	1,697	3,369	1,679	1,690	612
BARANGAY 161	3,315	1,669	1,646	3,296	1,668	1,628	615
BARANGAY 162	3,076	1,535	1,541	3,076	1,535	1,541	630
BARANGAY 163	2,950	1,474	1,476	2,950	1,474	1,476	635
BARANGAY 164	4,823	2,405	2,418	4,823	2,405	2,418	885
BARANGAY 165	4,802	2,495	2,307	4,802	2,495	2,307	961
BARANGAY 166	2,015	996	1,019	2,015	996	1,019	381
BARANGAY 167	2,646	1,366	1,280	2,588	1,313	1,275	462
BARANGAY 168	2,919	1,471	1,448	2,919	1,471	1,448	578
BARANGAY 169	2,504	1,105	1,399	2,504	1,105	1,399	548
BARANGAY 170	2,583	1,250	1,333	2,583	1,250	1,333	477
BARANGAY 171	2,828	1,447	1,388	2,825	1,440	1,385	557
BARANGAY 172	3,515	1,677	1,838	3,502	1,664	1,838	587

**TOTAL AND PRIVATE HOUSEHOLD POPULATION BY SEX AND NUMBER OF PRIVATE HOUSEHOLDS
BY PROVINCE, MUNICIPALITY AND BARANGAY: 1980 - CONTINUED**
(Total population includes the population of private households and collective households.)

CITY, MUNICIPALITY AND BARANGAY	TOTAL POPULATION		PRIVATE HOUSEHOLD POPULATION		NUMBER OF PRIVATE HOUSEHOLDS		
	BOTH SEXES	MALE	FEMALE	BOTH SEXES		MALE	FEMALE
BARANGAY 173	843	422	421	843	422	421	146
BARANGAY 174	2,597	1,323	1,274	2,588	1,314	1,274	47
BARANGAY 175	7,629	4,018	3,611	7,395	3,844	3,549	1,417
BARANGAY 176	3,811	1,934	1,877	3,812	1,934	1,877	773
BARANGAY 177	3,171	1,555	1,616	3,145	1,543	1,602	598
BARANGAY 178	5,345	2,786	2,559	5,345	2,786	2,559	997
BARANGAY 179	3,440	1,733	1,707	3,440	1,733	1,707	615
BARANGAY 180	1,433	751	682	1,416	734	682	285
BARANGAY 181	2,549	1,316	1,233	2,549	1,316	1,233	474
BARANGAY 182	2,693	1,381	1,312	2,693	1,381	1,312	444
BARANGAY 183	894	456	438	894	456	438	158
BARANGAY 184	1,060	512	548	1,060	512	548	170
BARANGAY 185	2,115	1,067	1,048	2,115	1,067	1,048	375
BARANGAY 186	3,544	1,833	1,711	3,471	1,812	1,659	619
BARANGAY 187	4,152	2,041	2,111	3,862	1,958	1,904	855
BARANGAY 188	3,646	2,082	1,564	3,185	1,650	1,535	669
PASAY CITY	287,770	139,897	147,873	285,682	138,499	147,183	55,236
BARANGAY 1	677	313	364	677	313	364	14
BARANGAY 2	2,159	1,044	1,115	2,159	1,044	1,115	425
BARANGAY 3	1,118	566	552	1,118	566	552	251
BARANGAY 4	1,727	808	919	1,727	808	919	325
BARANGAY 5	354	150	204	354	150	204	75
BARANGAY 6	420	182	238	427	182	238	109
BARANGAY 7	464	208	256	464	208	256	112
BARANGAY 8	1,757	833	924	1,757	833	924	374
BARANGAY 9	485	227	258	473	222	251	101
BARANGAY 10	1,107	544	563	1,107	544	563	219
BARANGAY 11	246	108	138	246	108	138	52
BARANGAY 12	268	123	145	268	123	145	61
BARANGAY 13	1,631	765	866	1,588	751	837	371
BARANGAY 14	868	410	458	868	410	458	176
BARANGAY 15	2,360	1,101	1,259	2,360	1,101	1,259	590
BARANGAY 16	1,879	885	994	1,823	874	949	389
BARANGAY 17	615	312	303	615	312	303	114

TOTAL AND PRIVATE HOUSEHOLD POPULATION BY SEX AND NUMBER OF PRIVATE HOUSEHOLDS
BY PROVINCE, MUNICIPALITY AND BARANGAY: 1980 - CONTINUED
(Total population includes the population of private households and collective households.)

CITY, MUNICIPALITY AND BARANGAY	TOTAL POPULATION		PRIVATE HOUSEHOLD POPULATION		NUMBER OF PRIVATE HOUSEHOLDS		
	BOTH SEXES	MALE	FEMALE	BOTH SEXES		MALE	FEMALE
BARANGAY 18	1,962	924	1,038	1,962	924	1,038	351
BARANGAY 19	804	395	409	804	395	409	136
BARANGAY 20	666	303	363	666	303	363	128
BARANGAY 21	1,011	457	554	1,011	457	554	175
BARANGAY 22	998	504	494	998	504	494	168
BARANGAY 23	2,476	1,143	1,333	2,463	1,142	1,321	469
BARANGAY 24	960	444	516	937	430	507	166
BARANGAY 25	1,618	772	846	1,588	764	824	299
BARANGAY 26	1,210	611	599	1,210	611	599	226
BARANGAY 27	916	426	490	916	426	490	167
BARANGAY 28	886	407	479	886	407	479	151
BARANGAY 29	1,535	729	806	1,535	729	806	297
BARANGAY 30	957	474	483	915	448	467	190
BARANGAY 31	1,990	968	1,022	1,984	964	1,020	340
BARANGAY 32	2,140	1,021	1,119	2,140	1,021	1,119	366
BARANGAY 33	703	331	372	703	331	372	148
BARANGAY 34	1,124	527	597	1,119	527	592	216
BARANGAY 35	365	151	214	308	135	173	64
BARANGAY 36	224	98	126	224	98	126	40
BARANGAY 37	933	425	508	933	425	508	196
BARANGAY 38	2,366	1,102	1,264	2,366	1,102	1,264	484
BARANGAY 39	1,264	575	689	1,264	575	689	250
BARANGAY 40	2,553	1,163	1,390	2,553	1,163	1,390	418
BARANGAY 41	1,028	483	545	1,028	483	545	192
BARANGAY 42	1,574	736	838	1,574	736	838	280
BARANGAY 43	1,763	906	857	1,763	906	857	312
BARANGAY 44	1,889	831	1,058	1,887	829	1,058	398
BARANGAY 45	1,110	515	595	1,110	515	595	182
BARANGAY 46	2,546	1,249	1,297	2,546	1,249	1,297	472
BARANGAY 47	1,433	658	775	1,433	658	775	274
BARANGAY 48	626	292	334	626	292	334	133
BARANGAY 49	499	249	250	499	249	250	104
BARANGAY 50	771	368	403	771	368	403	145
BARANGAY 51	1,704	852	852	1,704	852	852	365
BARANGAY 52	1,037	485	552	1,037	485	552	222

**TOTAL AND PRIVATE HOUSEHOLD POPULATION BY SEX AND NUMBER OF PRIVATE HOUSEHOLDS
BY PROVINCE, MUNICIPALITY AND BARANGAY: 1990 - CONTINUED**

(Total population includes the population of private households and collective households.)

CITY, MUNICIPALITY AND BARANGAY	TOTAL POPULATION		PRIVATE HOUSEHOLD POPULATION		NUMBER OF PRIVATE HOUSEHOLDS		
	BOTH SEXES	MALE	FEMALE	BOTH SEXES		MALE	FEMALE
BARANGAY 53	779	355	424	779	355	424	141
BARANGAY 54	1,189	584	605	1,189	584	605	262
BARANGAY 55	890	396	494	890	396	494	222
BARANGAY 56	813	378	435	813	378	435	211
BARANGAY 57	1,094	521	573	1,094	521	573	252
BARANGAY 58	2,057	983	1,074	2,057	983	1,074	433
BARANGAY 59	1,329	574	755	1,324	574	750	217
BARANGAY 60	1,511	728	783	1,501	721	780	300
BARANGAY 61	2,334	1,154	1,180	2,334	1,154	1,180	466
BARANGAY 62	1,231	619	612	1,231	619	612	235
BARANGAY 63	681	330	351	677	326	351	127
BARANGAY 64	1,334	649	685	1,334	649	685	250
BARANGAY 65	1,698	804	894	1,681	804	877	310
BARANGAY 66	2,967	1,453	1,514	2,967	1,453	1,514	567
BARANGAY 67	1,413	692	721	1,413	692	721	252
BARANGAY 68	540	262	278	540	262	278	96
BARANGAY 69	1,291	602	689	1,291	602	689	223
BARANGAY 70	1,293	652	641	1,282	457	626	27
BARANGAY 71	515	229	286	515	229	286	93
BARANGAY 72	1,453	683	770	1,453	683	770	246
BARANGAY 73	1,092	456	636	1,012	456	556	18
BARANGAY 74	731	348	383	731	348	383	132
BARANGAY 75	968	442	526	968	442	526	174
BARANGAY 76	424	170	254	382	170	212	8
BARANGAY 77	1,926	890	1,036	1,926	885	1,036	345
BARANGAY 78	433	204	229	433	204	229	89
BARANGAY 79	567	279	288	556	276	281	116
BARANGAY 80	729	352	377	729	352	377	120
BARANGAY 81	914	425	489	914	425	489	169
BARANGAY 82	626	301	325	626	301	325	129
BARANGAY 83	892	457	435	892	457	435	178
BARANGAY 84	1,391	662	729	1,369	656	713	267
BARANGAY 85	1,687	781	906	1,672	773	899	308
BARANGAY 86	1,665	479	595	1,665	479	595	190
BARANGAY 87	462	212	250	462	212	250	85

TOTAL AND PRIVATE HOUSEHOLD POPULATION BY SEX AND NUMBER OF PRIVATE HOUSEHOLDS
 IN PROVINCE, MUNICIPALITY AND BARANGAY, 1980 - CONTINUED
 (Total population includes the population of private households and collective households.)

CITY, MUNICIPALITY AND BARANGAY	TOTAL POPULATION		PRIVATE HOUSEHOLD POPULATION		NUMBER OF PRIVATE HOUSEHOLDS		
	BOTH SEXES	MALE	FEMALE	BOTH SEXES		MALE	FEMALE
BARANGAY 88	1,484	712	772	1,482	710	772	249
BARANGAY 89	1,248	593	655	1,240	592	648	221
BARANGAY 90	1,484	745	739	1,473	736	737	246
BARANGAY 91	868	431	437	855	427	428	137
BARANGAY 92	602	306	296	567	279	288	99
BARANGAY 93	285	119	166	285	119	166	53
BARANGAY 94	2,288	1,086	1,202	2,288	1,086	1,202	433
BARANGAY 95	1,309	604	705	1,269	592	677	228
BAPANGAY 96	1,037	491	546	1,037	491	546	187
BARANGAY 97	1,342	632	710	1,342	632	710	241
BARANGAY 98	1,127	528	599	1,127	528	599	224
BARANGAY 99	1,261	616	645	1,261	616	645	244
BAPANGAY 100	691	308	383	691	308	383	122
BARANGAY 101	213	88	125	213	88	125	37
BARANGAY 102	825	385	440	825	385	440	144
BAPANGAY 103	750	347	403	750	347	403	137
BARANGAY 104	986	471	515	947	454	493	171
BARANGAY 105	567	227	340	567	227	340	96
BAPANGAY 106	905	432	473	905	432	473	167
BARANGAY 107	1,433	686	747	1,433	686	747	350
BARANGAY 108	2,030	953	1,077	2,030	953	1,077	37
BAPANGAY 109	1,010	491	519	1,010	491	519	194
BARANGAY 110	2,058	1,000	1,058	2,058	1,000	1,058	384
BAPANGAY 111	1,059	501	558	1,059	501	558	187
BAPANGAY 112	510	231	279	509	230	279	89
BARANGAY 113	1,500	705	795	1,500	705	795	272
BARANGAY 114	985	469	516	985	469	516	156
BAPANGAY 115	1,186	581	605	1,186	581	605	229
BARANGAY 116	1,193	573	620	1,193	573	620	211
BARANGAY 117	1,044	501	543	1,044	501	543	198
BAPANGAY 118	1,616	783	833	1,598	778	820	312
BAPANGAY 119	1,326	642	684	1,326	642	684	272
BARANGAY 120	881	401	480	881	401	480	173
BARANGAY 121	986	486	500	986	486	500	194
BARANGAY 122	1,054	511	543	1,054	511	543	215

TOTAL AND PRIVATE HOUSEHOLD POPULATION BY SEX AND NUMBER OF PRIVATE HOUSEHOLDS
 BY PROVINCE, MUNICIPALITY AND BARANGAY, 1980 - CONTINUED

(Total population includes the population of private households and collective households.)

CITY, MUNICIPALITY AND BARANGAY	TOTAL POPULATION		PRIVATE HOUSEHOLD POPULATION		TOTAL PRIVATE HOUSEHOLDS	
	BOTH SEXES	MALE	BOTH SEXES	MALE	NUMBER	
					PRIVATE	COLLECTIVE
BARANGAY 123	1,434	668	1,434	668	1	350
BARANGAY 124	1,171	584	1,171	584	1	187
BARANGAY 125	1,796	910	1,796	910	1	357
BARANGAY 126	591	288	591	288	1	111
BARANGAY 127	1,524	758	1,524	758	1	315
BARANGAY 128	1,168	561	1,168	561	1	219
BARANGAY 129	1,330	655	1,330	655	1	261
BARANGAY 130	2,264	1,129	2,264	1,129	1	445
BARANGAY 131	1,195	603	1,177	591	1	194
BARANGAY 132	1,427	694	1,427	694	1	267
BARANGAY 133	1,464	688	1,456	687	1	158
BARANGAY 134	829	421	829	421	1	158
BARANGAY 135	2,337	1,163	2,337	1,163	1	436
BARANGAY 136	1,753	817	1,752	817	1	326
BARANGAY 137	1,961	1,005	1,961	1,005	1	388
BARANGAY 138	1,196	580	1,196	580	1	224
BARANGAY 139	756	387	756	387	1	135
BARANGAY 140	863	390	863	390	1	172
BARANGAY 141	1,006	476	1,006	476	1	203
BARANGAY 142	487	238	484	235	1	107
BARANGAY 143	1,984	995	1,984	995	1	369
BARANGAY 144	2,656	1,340	2,656	1,340	1	558
BARANGAY 145	5,271	2,700	5,271	2,700	1	1,141
BARANGAY 146	623	263	623	253	1	111
BARANGAY 147	1,761	823	1,757	820	1	364
BARANGAY 148	968	482	968	482	1	178
BARANGAY 149	883	440	883	440	1	185
BARANGAY 150	625	317	625	307	1	157
BARANGAY 151	636	306	636	306	1	137
BARANGAY 152	647	300	647	300	1	118
BARANGAY 153	1,134	572	1,134	572	1	231
BARANGAY 154	528	252	528	252	1	129
BARANGAY 155	439	216	439	216	1	91
BARANGAY 156	2,677	1,365	2,675	1,364	1	547
BARANGAY 157	679	359	679	359	1	139

LIBRARY

TOTAL AND PRIVATE HOUSEHOLD POPULATION BY SEX AND NUMBER OF PRIVATE HOUSEHOLDS
BY PROVINCE, MUNICIPALITY AND BARANGAY: 1980 - CONTINUED

(Total population includes the population of private households and collective households.)

CITY, MUNICIPALITY AND BARANGAY	TOTAL POPULATION		PRIVATE HOUSEHOLD POPULATION		NUMBER OF PRIVATE HOUSEHOLDS		
	BOTH SEXES	MALE	FEMALE	BOTH SEXES		MALE	FEMALE
BARANGAY 158	536	270	266	536	270	266	114
BAPANGAY 159	1,033	506	533	1,033	506	533	196
BAPANGAY 160	802	368	434	802	368	434	148
BARANGAY 161	1,640	781	859	1,640	781	859	349
BARANGAY 162	522	253	269	522	253	269	99
BAPANGAY 163	993	518	475	993	518	475	194
BARANGAY 164	1,086	540	546	1,086	540	546	222
BARANGAY 165	1,745	860	885	1,745	860	885	358
BARANGAY 166	1,135	523	612	1,135	523	612	242
BAPANGAY 167	352	162	190	352	162	190	72
BAPANGAY 168	460	243	217	460	243	217	89
BAPANGAY 169	1,531	766	765	1,531	766	765	300
BAPANGAY 170	1,378	622	756	1,378	622	756	239
BARANGAY 171	2,758	1,339	1,419	2,758	1,339	1,419	629
BAPANGAY 172	2,869	1,378	1,491	2,869	1,378	1,491	574
UACANGAY 173	1,532	772	760	1,532	772	760	304
BAPANGAY 174	600	286	314	600	286	314	132
BAPANGAY 175	1,631	787	844	1,631	787	844	300
BAPANGAY 176	1,209	586	623	1,209	586	623	214
BAPANGAY 177	3,830	1,954	1,876	3,830	1,937	1,892	801
BARANGAY 178	5,314	2,683	2,631	5,314	2,683	2,631	1,014
BAPANGAY 179	3,029	1,569	1,460	3,029	1,569	1,460	556
BARANGAY 180	1,054	536	524	1,054	530	524	207
BAPANGAY 181	1,505	744	761	1,505	744	761	294
BAPANGAY 182	1,274	641	633	1,274	641	633	251
BAPANGAY 183	20,753	10,691	10,062	19,841	9,861	9,980	3,872
BAPANGAY 184	5,809	2,915	2,894	5,809	2,915	2,894	1,059
BAPANGAY 185	4,373	2,127	2,246	4,373	2,127	2,246	802
BAPANGAY 186	1,082	545	537	1,082	545	537	209
BAPANGAY 187	3,089	1,531	1,558	3,089	1,531	1,558	580
BAPANGAY 188	801	355	446	801	355	446	139
BAPANGAY 189	1,280	618	662	1,280	618	662	230
BAPANGAY 190	1,748	869	879	1,748	869	879	309
BAPANGAY 191	1,172	576	596	1,172	576	596	222
BAPANGAY 192	1,771	885	886	1,771	885	886	328

POPULATION AND PRIVATE HOUSEHOLD POPULATION BY SEX AND NUMBER OF PRIVATE HOUSEHOLDS
BY PROVINCE, MUNICIPALITY AND BARANGAY; 1980 - CONTINUED

(Total population includes the population of private households and collective households.)

CITY, MUNICIPALITY AND BARANGAY	TOTAL POPULATION		PRIVATE HOUSEHOLD POPULATION		NUMBER OF PRIVATE HOUSEHOLDS		
	BOTH SEXES	MALE	FEMALE	BOTH SEXES		MALE	FEMALE
BARANGAY 193	3,755	1,915	1,840	3,755	1,915	1,840	660
BARANGAY 194	2,765	1,341	1,424	2,765	1,341	1,424	524
BARANGAY 195	942	508	434	799	407	395	155
BARANGAY 196	805	407	398	805	407	398	161
BARANGAY 197	1,661	851	810	1,652	851	801	301
BARANGAY 198	2,145	1,098	1,047	2,145	1,098	1,047	433
BARANGAY 199	1,524	783	741	1,524	783	741	264
BARANGAY 200	1,176	587	589	1,176	587	589	276
MANDALUYONG	205,366	98,878	106,488	204,813	98,616	106,197	38,881
ADDITION HILLS	15,535	7,388	8,147	15,502	7,368	8,134	2,874
BAGONG SILANG	4,247	1,959	2,288	4,247	1,959	2,288	863
BARANGKA DRIVE	10,580	5,277	5,303	10,580	5,277	5,303	2,174
BARANGKA IBAWA	6,800	3,292	3,508	6,800	3,292	3,508	1,335
BARANGKA ILAYA	5,650	2,685	2,965	5,649	2,684	2,965	1,083
BARANGKA ITAAS	9,012	4,332	4,680	9,012	4,332	4,680	1,821
BURDI	2,207	1,090	1,117	2,207	1,090	1,117	445
BUAYANG BATO	1,176	612	564	1,176	612	564	232
DAANG BAKAL	4,125	1,975	2,150	4,109	1,966	2,143	777
HAGDANG BATO ITAAS	10,117	5,009	5,108	10,117	5,009	5,108	1,942
HAGDANG BATO LIBIS	7,522	3,586	3,936	7,522	3,586	3,936	1,485
HARAPIN ANG BUKAS	4,439	2,071	2,368	4,439	2,071	2,368	845
HIGHWAY HILLS	12,904	6,030	6,874	12,797	6,009	6,788	2,301
HULI	13,996	6,952	7,044	13,996	6,952	7,044	2,702
MABINI-J. RIZAL	6,865	3,418	3,447	6,844	3,408	3,436	1,319
MALAMIG	8,218	3,839	4,379	8,078	3,781	4,297	1,502
MAUMAY	11,081	5,369	5,712	11,054	5,358	5,696	2,120
NAMAYAN	3,124	1,588	1,536	3,099	1,563	1,536	611
NEW ZANIGA	6,000	2,709	3,291	5,984	2,700	3,284	1,035
OLD ZANIGA	5,227	2,567	2,660	5,216	2,556	2,660	951
PAG-ASA	4,393	2,135	2,258	4,373	2,115	2,258	799
PLAIVIEW	19,574	9,379	10,195	19,525	9,341	10,184	3,634
PLEASANT HILLS	3,767	1,817	1,950	3,765	1,815	1,950	702
POBLACION	14,593	7,065	7,528	14,586	7,059	7,527	2,825
SAN JOSE	6,021	2,986	3,035	6,021	2,986	3,035	1,175

TOTAL AND PRIVATE HOUSEHOLD POPULATION BY SEX AND NUMBER OF PRIVATE HOUSEHOLDS
BY PROVINCE, MUNICIPALITY AND BARANGAY: 1990 - CONTINUED

(Total population includes the population of private households and collective households.)

CITY, MUNICIPALITY AND BARANGAY	TOTAL POPULATION		PRIVATE HOUSEHOLD POPULATION		TOTAL HOUSEHOLDS		
	BOTH SEXES	MALE	FEMALE	BOTH SEXES		MALE	FEMALE
VERGARA	4,613	2,341	2,272	4,613	2,341	2,272	877
MACK-MACK GREENHILL	3,580	1,407	2,173	3,502	1,386	2,116	452
MARIKINA	211,613	103,080	108,533	210,987	102,832	108,155	38,919
BARANGKA	18,246	9,242	9,004	18,239	9,237	9,002	3,479
CALUMPANG	20,468	9,879	10,589	20,265	9,836	10,429	3,758
CONCEPCION UND	31,124	15,159	15,965	31,085	15,141	15,944	5,802
JESUS DE LA PENA	9,029	4,276	4,753	9,007	4,270	4,737	1,607
MALANDAY	16,042	7,876	8,166	16,029	7,874	8,155	2,936
NANGKA	6,942	3,429	3,513	6,942	3,429	3,513	1,273
PARANG	35,113	17,483	17,630	34,852	17,361	17,491	6,629
SAN ROQUE	13,576	6,571	7,005	13,574	6,569	7,005	2,446
STA. ELENA (POBLACION)	6,013	2,845	3,168	6,005	2,837	3,168	1,135
STD. MINDO	24,950	12,154	12,796	24,906	12,120	12,786	4,638
TANDONG	8,584	4,242	4,342	8,584	4,242	4,342	1,663
CONCEPCION DOS	15,572	7,117	8,455	15,572	7,115	8,455	2,515
MARIKINA HEIGHTS	5,954	2,807	3,147	5,929	2,801	3,128	1,038
PASIG	268,570	130,527	138,043	267,862	129,989	137,873	50,288
BAGONG ILOG	18,858	9,064	9,794	18,725	9,023	9,702	3,525
BAGONG KATIPUNAN	1,036	516	520	1,036	516	520	214
BAMBANG	13,127	6,403	6,724	13,127	6,403	6,724	2,497
BUTING	8,487	4,157	4,330	8,487	4,157	4,330	1,508
CANTIGAN	21,074	10,252	10,822	21,073	10,251	10,822	4,067
DELA PAZ	5,560	2,706	2,854	5,560	2,706	2,854	994
KALAMAMAN	6,694	3,388	3,306	6,694	3,388	3,306	1,175
KAPASIGAN	6,134	2,929	3,205	6,134	2,929	3,205	1,228
KAPITOLYO	8,361	3,565	4,796	8,355	3,563	4,792	1,381
MALINAO	2,642	1,261	1,381	2,612	1,249	1,363	465
MANGAHAN	13,265	6,281	6,984	13,265	6,281	6,984	2,592
MAYBUNGA	11,420	5,545	5,875	11,420	5,545	5,875	2,190
ORABO	2,839	1,490	1,349	2,828	1,095	1,333	456
PALATIM	9,822	4,913	4,909	9,822	4,913	4,909	1,810
PINAGBUHATAN	12,964	6,657	6,307	12,964	6,657	6,307	2,398
PINEDA	9,943	4,800	5,143	9,943	4,800	5,143	1,861