



ISSN 2012-0362

# SELECTED STATISTICS ON AGRICULTURE *2014*



REPUBLIC OF THE PHILIPPINES  
PHILIPPINE STATISTICS AUTHORITY

## TERMS OF USE

***Selected Statistics on Agriculture 2014*** is a publication of the Philippine Statistics Authority. The PSA reserves exclusive right to reproduce this publication in whatever form. Should any portion of this publication be included in a report/article, the title of the publication and the PSA should be cited as the source of the data. The PSA will not be responsible for any information derived from the processing of data contained in this publication.

**ISSN-2012-0362**  
**JUNE 2014**

*Please direct technical inquiries to:*

The Office of Interim Deputy National Statistician  
Philippine Statistics Authority  
Ben-Lor Building, 1184 Quezon Avenue,  
Quezon City 1100, Philippines.

Email : [info@bas.gov.ph](mailto:info@bas.gov.ph)  
Website : [www.bas.gov.ph](http://www.bas.gov.ph)

## FOREWORD

Selected Statistics on Agriculture (SSA) is an annual publication released by the Philippine Statistics Authority (PSA). SSA 2014 is the 25<sup>th</sup> edition containing five-year data series (2009-2013) on agriculture and fisheries. Statistics and indicators are selected based on the demand of our data users. These are presented through tables and graphs for quick reference.

SSA can be downloaded from *www.bas.gov.ph* and is available in printed copies.

PSA constantly tries to improve its statistical products and services. As one of the products we offer, we welcome comments and feedback regarding the format and content of this publication.



**ROMEO S. RECIDE**

Interim Deputy National Statistician  
PSA, Sectoral Statistics Office  
Director, BAS

Quezon City, Philippines  
June 2014

## ACKNOWLEDGMENT

Our appreciation and gratitude go to the following agencies for their cooperation and support in sharing with us their data: *Agricultural Credit Policy Council (ACPC), Asian Development Bank (ADB), Bureau of Animal Industry (BAI), Bureau of Fisheries & Aquatic Resources (BFAR), Bangko Sentral ng Pilipinas (BSP), Department of Budget and Management (DBM), Development Bank of the Philippines (DBP), Food and Agriculture Organization (FAO), Fertilizer and Pesticide Authority (FPA), Philippine Fiber Industry Development Authority (PhilFIDA), National Food Authority (NFA), National Irrigation Administration (NIA), Philippine Coconut Authority (PCA), Philippine National Bank (PNB), Sugar Regulatory Administration (SRA) and World Bank (WB).*

**TABLE OF CONTENTS**

	Page/s
Foreword .....	i
Acknowledgment .....	ii
Table of Contents .....	iii
Explanatory Notes .....	iv
An Overview of the Philippine Agricultural Economy .....	1
Selected Macroeconomic and Agriculture Sector Statistics .....	4
Crops Subsector Statistics .....	10
Livestock & Poultry Subsector Statistics .....	20
Fisheries Subsector Statistics .....	26
Production Costs and Returns .....	32
Price Statistics .....	36
Agricultural Foreign Trade Statistics .....	44
Supply Utilization Accounts .....	56

## EXPLANATORY NOTES

1. Unless otherwise indicated, year refers to calendar year.
2. Sources of basic data are acknowledged at the bottom of each table.
3. As a rule, figures from source publications were copied to the extent possible. In some instances, however, figures were rounded-off or combined.
4. Figures may not add up to the totals due to rounding off.
5. Yield per hectare is derived prior to rounding-off the data on production and hectareage.
6. NFD represents the total amount of food available for consumption obtained by deducting from the total supply the total amount for allowances for non-food utilization and processed for food.
7. The following symbols and abbreviations are used in the tables:

---	<i>Data not yet available</i>
-	<i>None</i>
R	<i>Revised</i>
P	<i>Preliminary</i>
mt	<i>Metric Ton</i>
ha(s)	<i>Hectare/s</i>
kg	<i>Kilogram</i>
GNI	<i>Gross National Income</i>
GVA	<i>Gross Value Added</i>
GDP	<i>Gross Domestic Product</i>
PDB	<i>Private Development Bank</i>
SMB	<i>Savings and Mortgage Bank</i>
SSLA	<i>Stock Savings &amp; Loan Association</i>
FOB	<i>Freight on Board</i>
CIF	<i>Cost Insurance Freight</i>
NFD	<i>Net Food Disposable</i>

## AN OVERVIEW OF THE PHILIPPINE AGRICULTURAL ECONOMY

**Economic Performance.** In 2013, the country's Gross National Income (GNI) grew by 7.48 percent. Gross Domestic Product (GDP) posted a 7.18 percent growth. Gross Value Added (GVA) in agriculture and fishing went up by 0.90 percent. This sector contributed 10 percent to the GDP.

**Production Performance in Agriculture.** Gross output in agriculture grew by 1.12 percent in 2013. Production of palay increased by 2.26 percent while that of corn decreased by 0.40 percent. Output declines were noted for other major crops such as coconut, sugarcane, banana, coffee, abaca and calamansi. Overall, the crops subsector failed to record output increment during the year.

Production in the livestock subsector improved by 1.76 percent. Hog and cattle production rose by 1.95 percent and 1.76 percent, respectively. Dairy had a 5.58 percent output gain. The poultry subsector came up with a 4.29 percent growth in production. All poultry components posted output increments. Chicken had the biggest expansion at 5.11 percent.

The fisheries subsector recovered from the previous year's decline with a 1.24 percent increase in production in 2013.

**Prices.** On the average, farmers gained 2.18 percent from the prices they received for their produce in 2013. Prices of cereals rose by an average of 3.17 percent. Increases in prices were also noted in roots and tubers, as well as fruits. Poultry and livestock products posted the biggest price gains at 12.86 percent and 7.48 percent, respectively. Prices of fishery products went up by 1.03 percent. On the other hand, price cuts were registered for commercial crops at 4.62 percent and vegetables and legumes at 0.25 percent.

Meanwhile, prices paid by consumers for food and non-alcoholic beverages were up by an average of 2.79 percent in 2013.

**Agricultural Trade.** The country's export earnings from agricultural products increased by 25.41 percent in 2013. Coconut oil and fresh banana remained as top earners with a combined share of 30 percent in the total value of agricultural exports. Major markets for coconut oil were the United States of America and the Netherlands and for fresh banana, Japan and China.

The 2013 expenditures on agricultural imports dropped by 4.49 percent. Wheat and meslin, soyabean oil/cake meal, and milk and cream and products, together, comprised 30 percent of the country's total value of agricultural imports. The United States of America was the leading supplier of wheat and meslin and soyabean oil/cake meal. New Zealand and USA were the primary sources of milk and cream and products.

The country sustained agricultural trade deficit in 2013. Deficits were noted in the country's trade with Australia, USA and ASEAN countries.

**Employment and Wages.** Of the country's total labor force in 2013 at 41.02 million persons, 93 percent were employed. The agriculture sector employed 11.84 million persons and they comprised 31 percent of the national employment. In the first half of 2013, the daily nominal wage rates were P256.52 for palay farm workers and P206.04 for corn farm workers.

**Agricultural Support Services.** In 2013, the government expenditures for the agriculture sector amounted to P111.14 billion, higher by 26.03 percent from the 2012 record. Agricultural expenditures accounted for 5.54 percent of the national expenditures. Agricultural loans totalled P729.27 billion of which 32 percent were production loans.





**SELECTED  
MACROECONOMIC AND  
AGRICULTURE SECTOR  
STATISTICS**

## MACROECONOMIC & AGRICULTURE STATISTICS

**Table 1.1 MACROECONOMIC GROWTH INDICATORS, PHILIPPINES, 2009-2013**  
(Value at constant 2000 prices)

ITEM	2009	2010	2011R	2012R	2013
<b>GNI</b> ( <i>million pesos</i> )	6,988,767	6,851,138	7,058,037	7,507,597	8,069,033
Growth Rate (%)	6.05	-1.97	3.02	6.37	7.48
<b>GDP</b> ( <i>million pesos</i> )	5,297,240	5,701,539	5,910,201	6,312,174	6,765,459
Growth Rate (%)	1.15	7.63	3.66	6.80	7.18
<b>GVA IN AGRICULTURE EXCLUDING FORESTRY</b>					
( <i>million pesos</i> )	659,848	659,989	676,075	695,119	701,358
Growth Rate (%)					
<i>Agriculture Sector</i>	-0.71	0.02	2.44	2.82	0.90
<i>Crops</i>	-0.71	-1.89	4.97	4.27	0.04
<i>Livestock</i>	-0.96	0.64	1.96	1.09	1.77
<i>Poultry</i>	-1.97	7.67	4.40	4.60	4.22
<i>Fishing</i>	3.03	-0.50	-4.33	-0.38	0.75
<i>Agricultural Activities and Services</i>	-8.55	3.31	3.02	2.14	0.65

Source: PSA

**Table 1.1a PERFORMANCE OF AGRICULTURE BY SUBSECTOR, PHILIPPINES, 2009-2013**  
(Value at constant 2000 prices)

ITEM	2009	2010	2011R	2012R	2013
<b>GROSS OUTPUT IN AGRICULTURE</b>					
( <i>million pesos</i> )	734,707	731,489	747,353	768,962	777,554
Growth Rate (%)	-0.13	-0.44	2.17	2.89	1.12
<b>Crops</b> ( <i>million pesos</i> )	373,552	363,718	380,906	396,742	396,729
Growth Rate (%)	-1.52	-2.63	4.73	4.16	0.00
<b>Livestock</b> ( <i>million pesos</i> )	118,548	120,268	122,679	124,033	126,210
Growth Rate (%)	1.18	1.45	2.01	1.10	1.76
<b>Poultry</b> ( <i>million pesos</i> )	97,266	100,965	105,379	110,150	114,873
Growth Rate (%)	1.85	3.80	4.37	4.53	4.29
<b>Fisheries</b> ( <i>million pesos</i> )	145,341	146,538	138,389	138,037	139,742
Growth Rate (%)	1.18	0.82	-5.56	-0.25	1.24

Source: PSA

**Table 1.2 POPULATION, LABOR FORCE AND EMPLOYMENT AND WAGE RATES INDICES, PHILIPPINES, 2009-2013**

ITEM	2009	2010	2011	2012	2013
<b>POPULATION</b> (million persons) <sup>1/</sup>	92.23	92.34	94.18	95.77	97.35
<b>LABOR FORCE</b> (million persons)	37.89	38.89	40.00	40.43	41.02
Employment	35.06	36.04	37.19	37.60	38.12
Agriculture	12.04	11.96	12.27	12.09	11.84
Unemployment	2.83	2.86	2.81	2.83	2.90
<b>WAGE RATE INDICES IN AGRICULTURE</b> (Without Meal) <sup>2/</sup>					
Nominal	149.30	120.00	125.40	133.70	148.30 <sup>a</sup>
					143.90 <sup>b</sup>
Real	93.30	99.60	99.50	102.80	111.70 <sup>a</sup>
					108.40 <sup>b</sup>

1/ 2011 to 2013 population are projected based on 2010 CPH; 2010 is the final result of CPH

2/ 2013 indices covered only the first semester wage rates for (a) palay and (b) corn; 2010 to 2013 indices used 2006 as base year while 2009 indices used 2000 as base year

Source: PSA

**Table 1.3 PESO EXCHANGE RATE, INFLATION RATE AND PURCHASING POWER, PHILIPPINES, 2009-2013**

ITEM	2009	2010	2011	2012	2013
<b>OFFICIAL EXCHANGE RATE</b>					
(Pesos per US dollar)	47.64	45.11	43.31	42.23	42.45
<b>HEADLINE INFLATION RATE (%)</b> <sup>3/</sup>	4.13	3.88	4.65	3.17	3.00
<b>PURCHASING POWER OF PESO</b>	0.86	0.83	0.79	0.77	0.75

3/ 2006 as base year

Source: BSP

## MACROECONOMIC & AGRICULTURE STATISTICS

**Table 1.4 SHARE OF AGRICULTURE IN THE NATIONAL GOVERNMENT EXPENDITURES, PHILIPPINES, 2009-2013**

ITEM	2009	2010	2011	2012R	2013P
<b>NATIONAL GOVERNMENT</b> (million pesos)	1,434,146	1,472,977	1,580,017	1,828,981	2,005,900
<b>AGRICULTURE</b> (million pesos)	81,422	86,239	56,012	88,186	111,138
<b>AGRICULTURE TO NATIONAL GOVERNMENT RATIO (%)</b>	5.68	5.85	3.55	4.82	5.54

Source: DBM

**Table 1.5 SUPPLY OF FERTILIZER (All Grades) BY SOURCE, PHILIPPINES, 2009-2013**

ITEM	2009	2010	2011	2012	2013
<b>TOTAL SUPPLY</b> ('000 mt)	1,929.8	2,153.0	2,150.0	1,609.5	---
<b>Production</b>	196.1	182.5	614.5	314.0	---
<i>Production to Total Supply Ratio (%)</i>	10.2	8.5	28.6	19.5	---
<b>Import</b>	1,733.7	1,970.5	1,535.5	1,295.5	---
<i>Production to Total Supply Ratio (%)</i>	89.8	91.5	71.4	80.5	---

Source: FPA

**Table 1.6 SHARE OF SERVICE AREA IN THE TOTAL IRRIGABLE AREA, PHILIPPINES, 2009-2013**

ITEM	2009	2010	2011	2012	2013
<b>SERVICE AREA</b> (million ha)	1.54	1.54	1.57	1.63	1.68
<b>SERVICE AREA TO TOTAL IRRIGABLE AREA RATIO (%)</b>	49.26	49.34	50.25	52.03	55.59

Source: NIA

**Table 1.7 AGRICULTURAL PRODUCTION LOANS BY COMMODITY AND SOURCES, PHILIPPINES, 2009-2013**

ITEM	2009	2010	2011R	2012R	2013P
<b>LOANS GRANTED BY COMMODITY</b> ( <i>million pesos</i> )					
<b>FOOD</b>					
<b>COMMODITIES</b>	94,299.1	76,844.3	87,434.2	94,053.3	104,784.4
Cereals	34,945.8	34,982.3	40,885.0	44,431.9	50,705.1
<i>Palay</i>	32,948.4	32,771.4	36,547.5	39,950.7	44,654.0
<i>Corn</i>	1,961.6	2,137.4	4,288.1	4,382.5	5,963.6
<i>Sorghum</i>	24.8	8.4	39.3	8.4	79.5
<i>Soybeans and Feedgrains</i>	11.0	65.1	10.0	90.3	7.9
Fruits, Vegetables and Rootcrops	24,235.9	7,785.6	8,743.0	9,173.0	10,529.6
Livestock and Poultry	28,548.8	28,928.3	32,590.0	34,440.7	37,706.4
Fisheries	6,568.6	5,148.2	5,216.2	6,007.6	5,843.3
<b>EXPORT AND COMMERCIAL</b>					
<b>COMMODITIES</b>	18,056.7	17,399.0	16,701.8	20,611.6	22,466.7
Abaca and Other Fibers	82.6	81.3	127.4	83.8	145.9
Coconut	9,056.7	6,257.8	6,391.9	6,689.2	6,995.1
Coffee and Cacao	788.3	771.7	472.0	817.6	465.3
Rubber	189.2	36.3	84.7	85.7	87.9
Sugarcane	7,234.3	8,867.4	7,983.1	11,148.1	12,834.4
Tobacco	705.6	1,384.6	1,642.7	1,787.1	1,938.1
<b>FORESTRY</b>	197.3	314.8	315.5	416.1	348.7
<b>OTHERS</b>	26,558.9	34,721.8	43,036.5	38,869.2	47,996.1
<b>SUB-TOTAL</b>	139,111.9	129,279.8	147,488.0	153,950.1	175,595.8
<b>OTHER LOANS SOURCED FROM</b>					
<b>SSLA</b>	20,821.0	17,620.0	20,024.0	13,866.0	16,096.1
<b>SMB</b>	38,617.0	37,293.0	32,560.0	23,382.0	24,479.7
<b>PDB</b>	14,150.0	21,311.0	15,070.0	18,413.0	20,217.4
<b>GRAND TOTAL</b>	212,699.9	205,503.8	215,142.0	209,611.1	236,388.9

Source: ACPC

**Table 1.7a** SHARE OF AGRICULTURE IN THE TOTAL LOANS  
PHILIPPINES, 2009-2013

ITEM	2009	2010	2011R	2012R	2013P
<b>AGRICULTURAL PRODUCTION LOAN TO OUTPUT (GVA)</b>					
<b>RATIO (%)</b>	20.3	18.5	17.4	16.8	18.2
<b>AGRICULTURAL LOANS</b>					
<i>(million pesos, at current prices)</i>	628,506.5	612,327.0	640,102.0	679,394.7	729,267.1
<b>TOTAL LOANS</b>					
<i>(million pesos, at current prices)</i>	22,030,946.7	30,303,463.8	33,343,260.3	35,441,092.7	37,703,603.2
<b>AGRICULTURAL LOANS TO TOTAL LOANS GRANTED</b>					
<b>RATIO (%)</b>	2.9	2.0	1.9	1.9	1.9

Source: ACPC



## **CROPS SUBSECTOR STATISTICS**

## CROPS STATISTICS

**Table 2.1 CROPS: VOLUME OF PRODUCTION, PHILIPPINES, 2009-2013**

ITEM	2009	2010	2011	2012	2013
			(’000 mt)		
<b>TOTAL</b>	<b>81,599.7</b>	<b>75,583.2</b>	<b>87,294.5</b>	<b>88,001.9</b>	<b>85,731.4</b>
Palay	16,266.4	15,772.3	16,684.1	18,032.4	18,439.4
Corn	7,034.0	6,376.8	6,971.2	7,406.8	7,377.1
Coconut	15,667.6	15,510.3	15,244.6	15,862.4	15,353.2
Sugarcane	22,932.8	17,929.3	28,376.5	26,395.9	24,584.8
Banana	9,013.2	9,101.3	9,165.0	9,226.0	8,645.7
Pineapple	2,198.5	2,169.2	2,246.8	2,397.6	2,458.4
Coffee	96.4	94.5	88.5	88.9	78.6
Mango	771.4	825.7	788.1	768.2	816.2
Tobacco	36.4	40.5	44.9	48.1	53.8
Abaca	65.8	66.5	68.6	68.5	65.0
Peanut	31.0	29.6	29.7	29.1	29.1
Mongo	27.7	27.1	33.0	32.4	32.4
Cassava	2,043.7	2,101.5	2,209.7	2,223.1	2,361.5
Camote	560.5	541.3	516.3	516.4	527.7
Tomato	198.9	204.3	203.6	203.6	207.7
Garlic	10.5	9.6	9.1	8.5	8.6
Onion	127.1	135.4	128.4	124.8	134.2
Cabbage	124.7	129.0	125.3	126.4	127.4
Eggplant	200.9	208.2	208.0	211.9	219.9
Calamansi	192.2	188.3	182.6	178.5	164.1
Rubber	391.0	395.2	425.7	443.0	444.8
Others	3,608.9	3,727.1	3,544.8	3,609.4	3,601.7



**Table 2.2 CROPS: AREA PLANTED/HARVESTED,<sup>1/</sup>  
PHILIPPINES, 2009-2013**

ITEM	2009	2010	2011	2012	2013
	('000 ha)				
<b>TOTAL</b>	<b>13,031.5</b>	<b>12,805.6</b>	<b>13,131.0</b>	<b>R 13,353.0</b>	<b>13,344.7</b>
Palay	4,532.3	4,354.2	4,536.6	4,690.0	4,746.1
Corn	2,683.9	2,499.0	2,544.6	2,593.8	2,563.6
Coconut	3,401.5	3,575.9	3,562.0	3,573.8	3,550.5
Sugarcane	404.0	354.9	439.7	433.3	437.1
Banana	446.4	449.4	450.1	454.2	445.9
Pineapple	58.8	58.5	58.5	58.4	60.8
Coffee	122.6	121.4	119.6	R 120.0	116.5
Mango	188.1	189.4	187.1	188.6	187.8
Tobacco	26.1	29.7	32.2	34.0	34.5
Abaca	135.1	135.1	139.0	R 138.5	138.4
Peanut	28.2	27.1	26.9	26.1	25.6
Mongo	38.7	40.1	45.3	44.3	43.6
Cassava	215.9	217.6	221.2	217.3	R 217.1
Camote	114.4	109.4	103.7	101.0	R 94.8
Tomato	17.7	17.7	17.6	17.3	17.2
Garlic	3.6	3.0	2.8	2.6	2.5
Onion	14.5	15.2	14.6	15.0	15.4
Cabbage	8.5	8.6	8.6	8.5	8.4
Eggplant	21.2	21.4	21.4	21.5	21.2
Calamansi	20.9	21.0	21.1	20.8	20.2
Rubber	128.3	138.7	161.6	176.2	185.5
Others	420.7	418.2	416.9	R 417.6	R 412.1

1/ Area planted for permanent crops and area harvested for temporary crops.

## CROPS STATISTICS

**Table 2.3 CROPS: VALUE OF PRODUCTION, PHILIPPINES, 2009-2013**

ITEM	2009	2010	2011	2012	2013
	(million pesos, at current prices)				
<b>TOTAL</b>	<b>644,951.9</b>	<b>673,210.3</b>	<b>802,720.5</b>	<b>797,729.0</b>	<b>814,563.5</b>
Palay	238,140.4	229,645.0	254,265.2	292,125.4	314,760.6
Corn	76,037.9	69,698.4	87,698.1	94,066.9	90,148.2
Coconut	65,020.4	81,273.9	120,889.8	88,831.0	82,294.8
Sugarcane	28,895.4	38,547.9	56,185.5	42,497.4	40,073.3
Banana	89,050.3	106,485.7	102,556.9	108,130.2	117,151.8
Pineapple	11,586.1	10,889.6	14,334.6	17,742.6	17,479.5
Coffee	5,586.8	5,502.2	6,190.9	6,108.4	5,596.0
Mango	18,144.5	17,892.3	18,598.7	19,521.0	19,197.3
Tobacco	2,446.2	2,544.7	3,008.1	3,427.6	3,827.5
Abaca	2,363.3	2,353.8	2,706.7	2,710.3	2,445.4
Peanut	844.5	877.3	929.7	994.3	1,027.8
Mongo	1,073.4	1,400.4	1,766.3	1,481.3	1,476.4
Cassava	11,894.5	12,020.3	14,142.0	15,628.7	18,065.8
Camote	5,229.7	5,472.1	5,886.3	6,147.5	6,451.8
Tomato	2,397.2	2,126.6	2,542.7	2,823.7	2,984.1
Garlic	799.9	716.8	916.4	791.8	302.8
Onion	3,572.9	2,695.4	4,754.7	3,886.0	3,427.7
Cabbage	1,990.5	929.8	2,251.8	1,650.3	1,841.8
Eggplant	3,142.9	2,446.8	4,216.0	3,601.6	3,428.1
Calamansi	3,394.1	2,380.6	4,407.0	2,931.1	2,439.6
Rubber	13,144.4	24,311.2	30,667.4	21,622.3	17,605.6
Others	60,196.8	52,999.5	63,805.9	61,009.9	62,537.8

**Table 2.4 MAJOR CROPS: PERCENTAGE DISTRIBUTION OF PRODUCTION BY REGION, PHILIPPINES, 2013**

REGION	PALAY	CORN	COCO-NUT	SUGAR-CANE
<b>PHILIPPINES</b> ('000 mt)	<b>18,439.4</b>	<b>7,377.1</b>	<b>15,353.2</b>	<b>24,584.8</b>
<b>LUZON (%)</b>	<b>58.2</b>	<b>41.6</b>	<b>24.5</b>	<b>14.5</b>
CAR	2.5	3.3	0.0	0.1
Ilocos Region	9.5	6.1	0.3	0.1
Cagayan Valley	13.1	23.2	0.5	2.0
Central Luzon	18.5	3.1	1.2	4.1
CALABARZON	2.2	1.0	9.3	7.3
MIMAROPA	5.6	1.4	5.1	0.0
Bicol Region	6.7	3.5	8.2	1.1
<b>VISAYAS (%)</b>	<b>18.6</b>	<b>8.2</b>	<b>16.6</b>	<b>66.1</b>
Western Visayas	11.3	4.7	3.1	56.5
Central Visayas	1.9	2.3	3.0	8.4
Eastern Visayas	5.4	1.2	10.6	1.3
<b>MINDANAO (%)</b>	<b>23.2</b>	<b>50.2</b>	<b>58.9</b>	<b>19.4</b>
Zamboanga Peninsula	3.5	2.8	11.4	0.0
Northern Mindanao	3.7	16.1	11.8	14.2
Davao Region	2.3	3.1	14.8	1.8
SOCCSKSARGEN	7.3	17.7	6.8	3.0
Caraga	3.2	1.5	5.4	a/
ARMM	3.3	9.0	8.6	0.4

a/ Less than 0.01

## CROPS STATISTICS

**Table 2.4a MAJOR CROPS: PERCENTAGE DISTRIBUTION OF PRODUCTION BY REGION, PHILIPPINES, 2013**

REGION	PINEAPPLE	BANANA	MANGO	COFFEE
<b>PHILIPPINES</b> ('000 mt)	<b>2,458.4</b>	<b>8,645.7</b>	<b>816.2</b>	<b>78.6</b>
<b>LUZON (%)</b>	<b>10.1</b>	<b>9.8</b>	<b>54.9</b>	<b>17.5</b>
CAR	0.0	0.3	0.4	6.9
Ilocos Region	0.0	0.5	31.9	0.1
Cagayan Valley	1.3	4.2	5.9	1.0
Central Luzon	0.1	0.7	8.6	2.2
CALABARZON	3.6	1.4	6.7	6.7
MIMAROPA	0.0	1.8	1.2	0.2
Bicol Region	5.1	1.0	0.2	0.4
<b>VISAYAS (%)</b>	<b>1.2</b>	<b>9.1</b>	<b>14.7</b>	<b>6.7</b>
Western Visayas	0.7	3.8	5.9	6.3
Central Visayas	0.2	2.2	8.8	0.3
Eastern Visayas	0.3	3.0	0.1	0.2
<b>MINDANAO (%)</b>	<b>88.8</b>	<b>81.1</b>	<b>30.3</b>	<b>75.7</b>
Zamboanga Peninsula	0.1	3.0	11.3	1.2
Northern Mindanao	54.6	20.1	5.5	6.8
Davao Region	1.1	36.6	3.9	15.8
SOCCSKSARGEN	32.8	13.7	6.7	36.7
Caraga	0.1	2.4	1.9	1.9
ARMM	0.0	5.3	0.9	13.3

**Table 2.5 PALAY: PRODUCTION, AREA HARVESTED AND YIELD PER HECTARE, BY ECOSYSTEM, BY SEMESTER, PHILIPPINES, 2009-2013**

ITEM	2009	2010	2011	2012	2013
<b>PRODUCTION</b> ( <i>million mt</i> )					
<b>TOTAL</b>	<b>16.27</b>	<b>15.77</b>	<b>16.68</b>	<b>18.03</b>	<b>18.44</b>
<i>Irrigated</i>	12.08	11.99	12.36	13.40	13.82
<i>Rainfed</i>	4.18	3.78	4.33	4.64	4.62
<b>JANUARY-JUNE</b>	<b>7.38</b>	<b>6.62</b>	<b>7.58</b>	<b>7.89</b>	<b>8.00</b>
<i>Irrigated</i>	5.98	5.53	6.15	6.37	6.56
<i>Rainfed</i>	1.40	1.09	1.43	1.52	1.43
<b>JULY-DECEMBER</b>	<b>8.89</b>	<b>9.15</b>	<b>9.11</b>	<b>10.14</b>	<b>10.44</b>
<i>Irrigated</i>	6.10	6.46	6.21	7.02	7.26
<i>Rainfed</i>	2.79	2.69	2.90	3.12	3.18
<b>AREA HARVESTED</b> ( <i>million ha</i> )					
<b>TOTAL</b>	<b>4.53</b>	<b>4.35</b>	<b>4.54</b>	<b>4.69</b>	<b>4.75</b>
<i>Irrigated</i>	3.06	3.01	3.07	3.16	3.24
<i>Rainfed</i>	1.48	1.35	1.46	1.53	1.51
<b>JANUARY-JUNE</b>	<b>1.95</b>	<b>1.82</b>	<b>1.99</b>	<b>2.04</b>	<b>2.04</b>
<i>Irrigated</i>	1.43	1.37	1.48	1.49	1.53
<i>Rainfed</i>	0.52	0.45	0.52	0.55	0.52
<b>JULY-DECEMBER</b>	<b>2.59</b>	<b>2.54</b>	<b>2.54</b>	<b>2.65</b>	<b>2.70</b>
<i>Irrigated</i>	1.63	1.63	1.60	1.67	1.71
<i>Rainfed</i>	0.96	0.90	0.95	0.98	0.99
<b>YIELD PER HECTARE</b> ( <i>mt</i> )					
<b>TOTAL</b>	<b>3.59</b>	<b>3.62</b>	<b>3.68</b>	<b>3.84</b>	<b>3.89</b>
<i>Irrigated</i>	3.95	3.99	4.02	4.24	4.27
<i>Rainfed</i>	2.83	2.81	2.95	3.04	3.06

## CROPS STATISTICS

**Table 2.5 PALAY: PRODUCTION, AREA HARVESTED ...**(Continued)

ITEM	2009	2010	2011	2012	2013
<b>JANUARY-JUNE</b>	<b>3.79</b>	<b>3.64</b>	<b>3.80</b>	<b>3.88</b>	<b>3.91</b>
<i>Irrigated</i>	4.19	4.03	4.17	4.28	4.30
<i>Rainfed</i>	2.69	2.44	2.76	2.78	2.77
<b>JULY-DECEMBER</b>	<b>3.44</b>	<b>3.61</b>	<b>3.58</b>	<b>3.82</b>	<b>3.86</b>
<i>Irrigated</i>	3.75	3.95	3.89	4.20	4.24
<i>Rainfed</i>	2.91	2.99	3.06	3.18	3.21

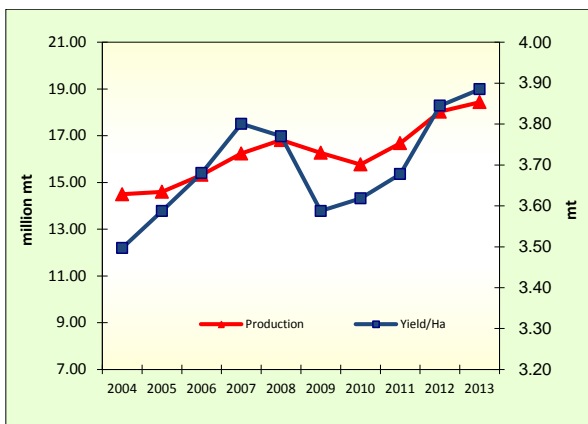


Figure 1. Palay: Production and Yield per Hectare, Philippines, 2004-2013

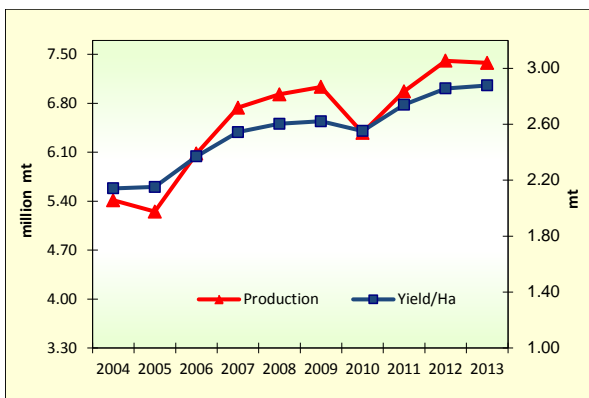
**Table 2.6 CORN: PRODUCTION, AREA HARVESTED AND YIELD PER HECTARE, BY CROPTYPE, BY SEMESTER, PHILIPPINES, 2009-2013**

ITEM	2009	2010	2011	2012	2013
<b>PRODUCTION (million mt)</b>					
<b>TOTAL</b>	<b>7.03</b>	<b>6.38</b>	<b>6.97</b>	<b>7.41</b>	<b>7.38</b>
White	2.32	2.17	2.15	2.17	2.13
Yellow	4.72	4.21	4.82	5.24	5.25
<b>JANUARY-JUNE</b>	<b>3.22</b>	<b>2.42</b>	<b>3.31</b>	<b>3.47</b>	<b>3.32</b>
White	0.87	0.75	0.88	0.89	0.79
Yellow	2.35	1.66	2.43	2.58	2.53
<b>JULY-DECEMBER</b>	<b>3.82</b>	<b>3.96</b>	<b>3.66</b>	<b>3.94</b>	<b>4.05</b>
White	1.45	1.42	1.27	1.28	1.34
Yellow	2.36	2.54	2.39	2.66	2.71
<b>AREA HARVESTED (million ha)</b>					
<b>TOTAL</b>	<b>2.68</b>	<b>2.50</b>	<b>2.54</b>	<b>2.59</b>	<b>2.56</b>
White	1.40	1.34	1.28	1.31	1.28
Yellow	1.28	1.16	1.26	1.28	1.29
<b>JANUARY-JUNE</b>	<b>1.13</b>	<b>0.97</b>	<b>1.10</b>	<b>1.11</b>	<b>1.08</b>
White	0.51	0.47	0.50	0.50	0.47
Yellow	0.62	0.50	0.60	0.61	0.60
<b>JULY-DECEMBER</b>	<b>1.55</b>	<b>1.53</b>	<b>1.44</b>	<b>1.48</b>	<b>1.49</b>
White	0.90	0.87	0.79	0.81	0.81
Yellow	0.66	0.66	0.66	0.67	0.68
<b>YIELD PER HECTARE (mt)</b>					
<b>TOTAL</b>	<b>2.62</b>	<b>2.55</b>	<b>2.74</b>	<b>2.86</b>	<b>2.88</b>
White	1.65	1.62	1.68	1.65	1.67
Yellow	3.68	3.63	3.82	4.09	4.08

## CROPS STATISTICS

**Table 2.6 CORN: PRODUCTION, AREA HARVESTED ...**(Continued)

ITEM	2009	2010	2011	2012	2013
<b>JANUARY-JUNE</b>	<b>2.85</b>	<b>2.50</b>	<b>3.01</b>	<b>3.12</b>	<b>3.09</b>
White	1.71	1.61	1.77	1.77	1.68
Yellow	3.77	3.33	4.02	4.24	4.19
<b>JULY-DECEMBER</b>	<b>2.46</b>	<b>2.59</b>	<b>2.54</b>	<b>2.66</b>	<b>2.72</b>
White	1.62	1.63	1.62	1.58	1.66
Yellow	3.60	3.85	3.64	3.95	3.99



*Figure 2. Corn: Production and Yield per Hectare, Philippines, 2004-2013*





## **LIVESTOCK AND POULTRY SUBSECTOR STATISTICS**

## LIVESTOCK & POULTRY STATISTICS

**Table 3.1 LIVESTOCK AND POULTRY: VOLUME OF PRODUCTION BY TYPE, PHILIPPINES, 2009-2013**

ITEM	2009	2010	2011	2012	2013
	('000 mt)				
<b>LIVESTOCK</b> ( <i>liveweight</i> )	<b>2,355.0</b>	<b>2,392.2</b>	<b>2,438.8</b>	<b>2,464.5</b>	<b>2,507.0</b>
Carabao	140.9	148.0	147.5	142.7	141.5
Cattle	245.1	251.7	256.3	254.0	258.5
Hog	1,877.3	1,898.2	1,940.4	1,973.6	2,012.2
Goat	77.4	78.5	78.2	75.7	75.4
Dairy	14.3	15.9	16.5	18.5	19.5
<b>POULTRY</b> ( <i>liveweight</i> )	<b>1,336.8</b>	<b>1,386.1</b>	<b>1,447.4</b>	<b>1,513.3</b>	<b>1,589.5</b>
Chicken	1,300.9	1,353.1	1,414.3	1,479.4	1,555.1
Duck	35.9	33.0	33.2	33.8	34.5
<b>Egg</b>	<b>408.1</b>	<b>424.0</b>	<b>441.1</b>	<b>460.8</b>	<b>468.8</b>
Chicken	368.5	387.3	403.4	421.1	427.7
Duck	39.6	36.7	37.7	39.7	41.1

**Table 3.2 LIVESTOCK AND POULTRY: VALUE OF PRODUCTION, BY TYPE, PHILIPPINES, 2009-2013**

ITEM	2009	2010	2011	2012	2013
	(million pesos, at current prices)				
<b>LIVESTOCK</b> ( <i>liveweight</i> )	<b>187,417.5</b>	<b>200,421.0</b>	<b>212,326.0</b>	<b>214,319.7</b>	<b>233,962.6</b>
Cattle	18,917.6	20,583.1	21,461.8	21,547.7	22,522.2
Hog	161,244.7	172,049.2	172,574.7	174,507.5	192,484.2
Goat	6,800.2	7,306.8	7,710.5	7,689.3	8,057.1
Dairy	455.1	481.8	498.9	561.3	593.7
<b>POULTRY</b> ( <i>liveweight</i> )	<b>36,772.1</b>	<b>39,019.0</b>	<b>40,414.6</b>	<b>167,033.7</b>	<b>175,179.3</b>
Duck	2,465.5	2,499.6	2,452.9	2,587.8	2,654.7
Chicken eggs	31,363.3	33,659.9	35,046.8	37,555.2	38,629.0
Duck eggs	2,943.3	2,859.6	2,914.9	3,195.5	3,533.3

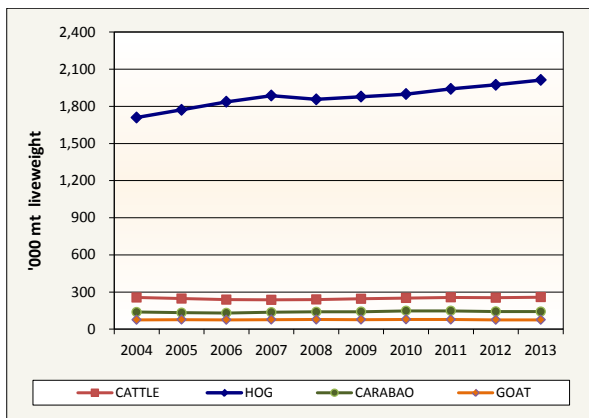


Figure 3a. Livestock: Volume of Production by Type, Philippines, 2004-2013

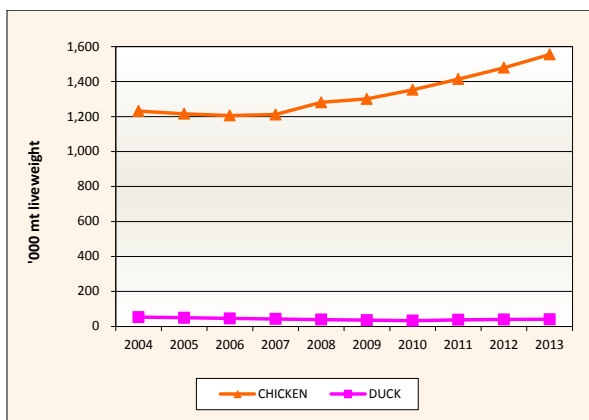


Figure 3b. Poultry: Volume of Production by Type, Philippines, 2004-2013

## LIVESTOCK & POULTRY STATISTICS

**Table 3.3 LIVESTOCK AND POULTRY: INVENTORY BY TYPE, PHILIPPINES, As of January 1, 2009-2014**

ITEM	2009	2010	2011	2012	2013	2014
<b>LIVESTOCK ('000 head)</b>						
Carabao	3,321	3,270	3,075	2,964	2,913	2,844
Dairy	13.6	13.9	14.7	15.7	15.4	16.8
Cattle	2,586	2,571	2,518	2,493	2,498	2,505
Dairy	15.1	16.9	17.4	19.3	21.1	21.6
Hog	13,596	13,398	12,303	11,863	11,843	11,802
Goat	4,222	4,178	3,882	3,715	3,694	3,691
Dairy	0.9	1.2	1.4	1.6	1.6	1.9
<b>POULTRY ('000 birds)</b>						
Chicken	158,663	158,984	162,813	164,192	166,386 R	167,671
Broiler	56,942	52,213	54,754	57,284	59,196 R	61,582
Layer	25,182	28,639	31,444	31,524	32,003 R	30,007
Native <sup>1/</sup>	76,540	78,132	76,615	75,384	75,188 R	76,082
Duck	10,577	10,268	10,126	10,011	10,136	9,918

1/ Includes gamefowls in the backyard

**Table 3.4 LIVESTOCK AND POULTRY: TOTAL NUMBER OF HEAD/BIRDS SLAUGHTERED/DRESSED BY TYPE, PHILIPPINES, 2009-2013**

ITEM	2009	2010	2011	2012	2013
<b>NUMBER OF ANIMALS SLAUGHTERED ('000 head)</b>					
Carabao	455	485	481	462	457
Cattle	808	831	836 R	831	844
Hog	24,144	24,246	24,333	24,500	24,919
Goat	3,110	3,167	3,179 R	3,101	3,118
<b>NUMBER OF BIRDS DRESSED ('000 birds)</b>					
Chicken <sup>2/</sup>	740,418	777,952	824,058	882,200 R	937,687
Duck	14,673	14,025	14,388	15,075 R	15,313

2/ Consists of dressed broiler, native chicken and culled layers only

**Table 3.5 LIVESTOCK: PERCENTAGE DISTRIBUTION OF PRODUCTION BY REGION, PHILIPPINES, 2013**

REGION	CARABAO	CATTLE	HOG	GOAT
<b>PHILIPPINES ('000 mt)</b>	<b>141.5</b>	<b>258.5</b>	<b>2,012.2</b>	<b>75.4</b>
<b>LUZON (%)</b>	<b>37.0</b>	<b>45.1</b>	<b>51.8</b>	<b>39.5</b>
CAR	2.4	1.8	1.5	1.1
Ilocos Region	7.6	10.8	4.1	14.0
Cagayan Valley	7.4	5.5	3.4	2.4
Central Luzon	4.6	7.3	18.0	10.7
CALABARZON	4.6	9.6	15.4	4.6
MIMAROPA	4.8	4.3	3.6	3.2
Bicol Region	5.6	5.8	5.7	3.7
<b>VISAYAS (%)</b>	<b>26.8</b>	<b>19.4</b>	<b>21.1</b>	<b>23.2</b>
Western Visayas	14.0	8.9	9.1	9.8
Central Visayas	4.8	9.5	7.8	12.0
Eastern Visayas	8.0	1.0	4.3	1.5
<b>MINDANAO (%)</b>	<b>36.2</b>	<b>35.5</b>	<b>27.1</b>	<b>37.3</b>
Zamboanga Peninsula	5.2	4.9	4.1	4.6
Northern Mindanao	6.1	14.2	7.9	9.5
Davao Region	8.3	4.6	6.7	7.7
SOCCSKSARGEN	8.8	7.2	5.9	8.2
Caraga	2.3	0.6	2.0	1.4
ARMM	5.5	4.0	0.6	6.0

## LIVESTOCK & POULTRY STATISTICS

**Table 3.6 POULTRY: PERCENTAGE DISTRIBUTION OF PRODUCTION BY REGION, PHILIPPINES, 2013**

REGION	CHICKEN	CHICKEN EGGS	DUCK	DUCK EGGS
<b>PHILIPPINES</b> ('000 mt)	<b>1,555.1</b>	<b>427.7</b>	<b>34.5</b>	<b>41.1</b>
<b>LUZON</b> (%)	<b>67.1</b>	<b>62.1</b>	<b>62.7</b>	<b>55.3</b>
CAR	0.5	0.7	2.4	1.9
Ilocos Region	5.4	3.2	5.4	3.6
Cagayan Valley	3.6	2.4	6.6	8.8
Central Luzon	35.4	20.2	41.6	31.7
CALABARZON	19.5	30.1	2.1	5.0
MIMAROPA	0.7	1.0	0.9	1.5
Bicol Region	2.2	4.4	3.6	2.7
<b>VISAYAS</b> (%)	<b>14.1</b>	<b>17.5</b>	<b>14.2</b>	<b>13.5</b>
Western Visayas	6.1	7.8	9.5	11.2
Central Visayas	5.7	9.0	0.7	0.9
Eastern Visayas	2.3	0.7	4.0	1.5
<b>MINDANAO</b> (%)	<b>18.8</b>	<b>20.4</b>	<b>23.1</b>	<b>31.2</b>
Zamboanga Peninsula	1.7	1.9	0.8	2.7
Northern Mindanao	8.7	9.3	4.6	9.3
Davao Region	4.3	5.5	3.3	2.6
SOCCSKSARGEN	2.9	2.1	11.0	10.4
Caraga	0.8	0.8	0.5	1.7
ARMM	0.4	0.8	3.0	4.5



## **FISHERIES SUBSECTOR STATISTICS**

## FISHERY STATISTICS

**Table 4.1 FISHERIES: VOLUME OF PRODUCTION, PHILIPPINES, 2009-2013**

ITEM	2009	2010	2011	2012	2013
	('000 mt)				
<b>TOTAL</b>	<b>5,079.9</b>	<b>5,159.5</b>	<b>4,973.5</b>	<b>4,865.1</b>	<b>4,705.4</b>
<b>Commercial</b>	<b>1,253.9</b>	<b>1,242.1</b>	<b>1,032.8</b>	<b>1,042.3</b>	<b>1,067.6</b>
<b>Municipal</b>	<b>1,348.6</b>	<b>1,371.4</b>	<b>1,332.6</b>	<b>1,280.8</b>	<b>1,264.4</b>
Marine	1,159.9	1,184.1	1,138.9	1,083.4	1,062.1
Inland	188.7	187.3	193.7	197.4	202.3
<b>Aquaculture</b>	<b>2,477.4</b>	<b>2,546.0</b>	<b>2,608.1</b>	<b>2,542.0</b>	<b>2,373.4</b>
Brackishwater Fishpond <sup>1/</sup>	308.4	304.3	311.1	320.2	327.4
Freshwater Fishcage/pen	163.6	165.1	164.0	165.4	170.5
Freshwater Fishpond <sup>2/</sup>	144.9	143.2	142.9	144.7	148.3
Marine Fishcage/pen	80.6	88.7	105.4	114.3	123.8
Others	1,779.8	1,844.7	1,884.7	1,797.4	1,603.4
Oyster	19.9	22.5	21.5	20.6	22.1
Mussel	19.9	20.9	22.4	25.7	22.9
Seaweed	1,740.0	1,801.3	1,840.8	1,751.1	1,558.4

1/ Includes brackishwater pen/cage

2/ Includes small farm reservoir and rice fish

**Table 4.2 FISHERIES: VALUE OF PRODUCTION, PHILIPPINES, 2009-2013**

ITEM	2009	2010	2011	2012	2013
	(million pesos, at current prices)				
<b>TOTAL</b>	<b>215,582.1</b>	<b>221,051.0</b>	<b>224,695.0</b>	<b>237,711.4</b>	<b>244,551.7</b>
<b>Commercial</b>	<b>58,705.0</b>	<b>60,457.0</b>	<b>58,623.0</b>	<b>65,894.2</b>	<b>69,922.5</b>
<b>Municipal</b>	<b>75,383.7</b>	<b>77,736.5</b>	<b>80,075.6</b>	<b>79,527.3</b>	<b>80,898.0</b>
Marine	67,558.8	70,199.0	72,028.1	70,982.7	71,909.3
Inland	7,824.9	7,537.5	8,047.5	8,544.6	8,988.7
<b>Aquaculture</b>	<b>81,493.4</b>	<b>82,857.5</b>	<b>85,996.4</b>	<b>92,289.9</b>	<b>93,731.2</b>



**Table 4.3 FISHERIES: PERCENTAGE DISTRIBUTION OF PRODUCTION BY REGION. PHILIPPINES, 2013**

REGION	MARINE	INLAND	AQUACULTURE
<b>PHILIPPINES</b> (000 mt)	2,129.7	202.3	2,373.4
<b>LUZON</b> (%)	34.6	64.6	42.4
NCR - Metro Manila	5.7	-	0.1
CAR	-	0.6	0.1
Ilocos Region	1.6	0.9	5.1
Cagayan Valley	1.5	7.0	0.7
Central Luzon	1.5	6.5	9.5
CALABARZON	4.8	46.0	9.0
MIMAROPA	9.5	0.5	14.6
Bicol Region	10.0	3.2	3.4
<b>VISAYAS</b> (%)	21.5	4.3	14.8
Western Visayas	11.3	3.8	7.3
Central Visayas	4.3	0.1	5.7
Eastern Visayas	5.9	0.4	1.9
<b>MINDANAO</b> (%)	43.9	31.1	42.7
Zamboanga Peninsula	15.8	0.5	10.0
Northern Mindanao	3.5	2.1	3.2
Davao Region	1.7	0.2	1.5
SOCCSKSARGEN	11.3	12.3	1.0
Caraga	2.8	2.2	1.0
ARMM	8.9	13.9	26.1

## FISHERY STATISTICS

**Table 4.4 FISHERIES: VOLUME OF PRODUCTION BY MAJOR SPECIES, PHILIPPINES, 2009-2013**

SECTOR/ MAJOR SPECIES	2009	2010	2011	2012	2013
	('000 mt)				
<b>MARINE SPECIES</b>	<b>2,413.9</b>	<b>2,426.2</b>	<b>2,171.8</b>	<b>2,125.7</b>	<b>2,129.7</b>
Indian sardines	324.1	334.0	232.9	246.0	229.2
Roundscad	243.7	268.2	239.6	233.5	270.8
Skipjack	251.6	228.2	197.4	206.5	212.2
Yellowfin tuna	152.4	147.3	123.0	125.3	130.1
Frigate tuna	152.3	149.6	132.6	131.7	134.2
Fimbriated sardines	137.6	108.0	98.8	95.5	89.1
Big-eyed scad	107.3	121.5	119.2	114.9	117.1
Indian mackerel	86.0	91.9	84.3	78.8	85.2
Anchovies	81.8	80.2	75.9	71.2	68.4
Squid	61.1	56.0	56.8	54.9	57.2
Slipmouth	60.9	64.1	61.1	57.0	50.8
Eastern little tuna	50.0	38.2	36.4	35.8	36.1
Indo-pacific mackerel	49.5	55.7	55.3	46.6	43.2
Threadfin bream	47.2	45.8	48.1	46.3	42.1
Crevalle	43.0	43.5	37.9	37.8	37.3
Blue crab	30.0	29.8	29.3	26.1	26.2
Cavalla	28.0	32.7	32.2	31.7	29.8
Flying fish	26.5	25.9	23.2	21.9	20.5
Siganid	26.5	25.9	25.7	26.1	28.2
Snapper	19.7	21.2	22.3	20.2	20.4
Bigeye tuna	5.7	11.6	9.6	12.5	11.8
Other species	429.0	446.9	430.2	405.7	389.6
<b>AQUACULTURE SPECIES</b>	<b>2,477.4</b>	<b>2,546.0</b>	<b>2,608.1</b>	<b>2,542.0</b>	<b>2,373.4</b>
Seaweed	1740.0	1801.3	1,840.8	1,751.1	1,558.4
Milkfish	347.6	349.4	372.6	386.7	401.1
Tilapia	260.9	258.8	257.4	260.5	268.8
Tiger prawn	47.8	48.2	47.5	48.2	49.5
Carp	15.7	16.7	17.3	17.7	18.3
Oyster	19.9	22.5	21.5	20.6	22.1
Mussel	19.9	20.9	22.4	25.7	22.9

**Table 4.4 FISHERIES: VOLUME OF PRODUCTION ... (Continued)**

SECTOR/ MAJOR SPECIES	2009	2010	2011	2012	2013
	('000 mt)				
Mud crab	13.7	14.4	15.7	16.4	15.8
Catfish	2.9	3.0	3.1	3.6	3.8
Other species	9.0	10.8	9.8	11.5	12.7
<b>INLAND SPECIES</b>	<b>188.7</b>	<b>187.3</b>	<b>193.8</b>	<b>197.4</b>	<b>202.3</b>
Snail	53.4	53.4	54.6	55.2	55.2
Tilapia	43.5	44.9	45.8	47.4	48.9
Carp	12.8	12.3	13.9	14.7	15.4
Mudfish	10.5	9.9	10.7	10.7	10.9
Gourami	6.4	6.2	7.3	6.6	6.8
Freshwater goby	5.9	5.6	5.6	5.4	5.3
Freshwater catfish	5.7	5.1	5.5	5.8	6.2
Freshwater shrimp	5.0	4.9	5.1	5.3	5.4
Freshwater catfish	1.9	2.0	1.9	1.9	1.9
Other fish species	30.5	30.3	29.0	29.7	32.8
Other crustaceans	5.8	5.2	5.8	5.4	5.0
Other molluscs	7.3	7.5	8.6	9.3	8.5

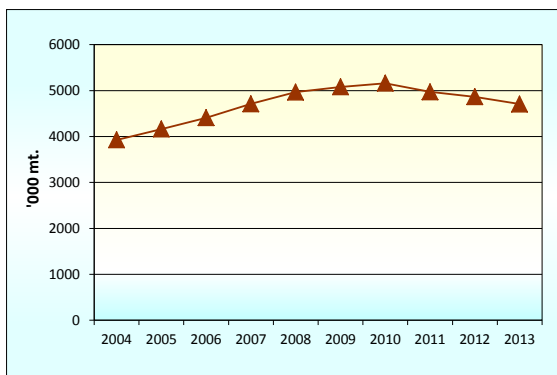


Figure 4. Fisheries: Volume of Production, Philippines, 2004-2013

## FISHERY STATISTICS

**Table 4.5 AQUACULTURE: VALUE OF PRODUCTION BY CULTURE ENVIRONMENT AND SPECIES, PHILIPPINES, 2009-2013**

ENVIRONMENT/ SPECIES	2009	2010	2011	2012	2013
	(million pesos, at current prices)				
<b>ALL TYPES OF ENVIRONMENT</b>	<b>81,493.4</b>	<b>82,857.5</b>	<b>85,996.4</b>	<b>92,289.9</b>	<b>93,731.2</b>
Brackishwater					
Fishpond <sup>1/</sup>	42,221.2	41,129.1	43,520.4	46,491.3	48,552.4
Freshwater					
Fishcage/pen	11,160.5	10,412.1	10,234.8	11,713.4	11,407.3
Freshwater					
Fishpond <sup>2/</sup>	9,822.7	8,947.3	9,126.2	9,967.8	10,862.8
Marine					
Fishcage/pen	8,381.3	10,040.2	11,310.6	13,917.4	12,568.0
Others <sup>3/</sup>	9,907.7	12,328.8	11,804.4	10,200.0	10,340.7
<b>ALL SPECIES</b>	<b>81,493.4</b>	<b>82,857.5</b>	<b>85,996.4</b>	<b>92,289.9</b>	<b>93,731.2</b>
Seaweed	9,591.3	11,974.7	11,391.1	9,776.3	9,903.2
Milkfish	28,467.8	27,673.9	30,620.9	34,847.4	35,358.7
Tilapia	17,990.3	16,529.1	16,570.7	18,506.0	19,215.6
Tiger prawn	18,507.6	18,224.2	18,545.6	18,968.4	19,718.9
Mussel	181.8	195.8	231.4	266.1	252.6
Oyster	134.6	158.2	181.8	157.6	170.9
Carp	369.7	369.9	507.3	563.7	612.4
Mud crab	3,674.4	3,900.6	4,388.2	4,822.4	4,799.9
Catfish	224.1	245.5	286.3	338.2	359.3
Other species	2,351.8	3,585.6	3,273.0	4,043.8	3,339.7

1/ Includes brackishwater pen/cage

2/ Includes small farm reservoir and rice fish

3/ Others include seaweeds, mussels and oyster



## **PRODUCTION COSTS AND RETURNS**

## PRODUCTION COSTS AND RETURNS

**Table 5.1 ALL PALAY: PRODUCTION COSTS AND RETURNS BY SEASON, PHILIPPINES, 2013P**

ITEM	DRY	WET	AVERAGE
	(pesos per hectare)		
Gross Returns	63,156	68,789	65,773
Cash Costs	18,551	16,993	17,861
Non-Cash Costs	15,742	16,240	16,042
Imputed Costs	9,707	10,375	9,960
Total Costs	44,000	43,608	43,863
Net Returns	19,156	25,181	21,910
.....			
Net Profit-Cost Ratio	0.44	0.58	0.50
Cost Per Kilogram ( <i>pesos</i> )	11.24	11.23	11.29

**Table 5.1a IRRIGATED PALAY: PRODUCTION COSTS AND RETURNS BY SEASON, PHILIPPINES, 2013P**

ITEM	DRY	WET	AVERAGE
	(pesos per hectare)		
Gross Returns	69,418	75,523	72,308
Cash Costs	21,280	19,362	20,262
Non-Cash Costs	17,227	18,220	17,763
Imputed Costs	9,744	9,417	9,603
Total Costs	48,251	46,999	47,628
Net Returns	21,167	28,524	24,680
.....			
Net Profit-Cost Ratio	0.44	0.61	0.52
Cost Per Kilogram ( <i>pesos</i> )	11.22	11.03	11.15

**Table 5.1b NON-IRRIGATED PALAY: PRODUCTION COSTS AND RETURNS BY SEASON, PHILIPPINES, 2013P**

ITEM	DRY	WET	AVERAGE
	(pesos per hectare)		
Gross Returns	44,724	57,200	51,772
Cash Costs	11,933	13,572	12,810
Non-Cash Costs	11,579	13,212	12,489
Imputed Costs	9,648	11,757	10,723
Total Costs	33,160	38,541	36,022
Net Returns	11,564	18,659	15,750
.....			
Net Profit-Cost Ratio	0.35	0.48	0.44
Cost Per Kilogram ( <i>pesos</i> )	11.97	11.94	11.78

**Table 5.2 CORN: PRODUCTION COSTS AND RETURNS BY TYPE, PHILIPPINES, 2013P**

ITEM	WHITE	YELLOW	ALL
	(pesos per hectare)		
Gross Returns	23,010	47,497	35,284
Cash Costs	7,257	23,542	14,141
Non-Cash Costs	2,623	2,203	2,465
Imputed Costs	9,864	8,358	9,141
Total Costs	19,744	34,103	25,747
Net Returns	3,266	13,394	9,537
.....			
Net Profit-Cost Ratio	0.17	0.39	0.37
Cost Per Kilogram ( <i>pesos</i> )	11.86	8.35	8.95

## PRODUCTION COSTS AND RETURNS

**Table 5.3 OTHER MAJOR CROPS: PRODUCTION COSTS AND RETURNS, PHILIPPINES, 2013P**

ITEM	MANGO <sup>1/</sup>	PINEAPPLE	COFFEE <sup>1/</sup>
	(pesos per hectare)		
Gross Returns	110,711	277,336	49,964
Cash Costs	42,483	61,076	20,753
Non-Cash Costs	4,466	738	1,078
Imputed Costs	22,368	13,071	8,023
Total Costs	69,317	74,885	29,854
Net Returns	41,394	202,451	20,110
.....			
Net Profit-Cost Ratio	0.60	2.70	0.67
Cost Per Kilogram ( <i>pesos</i> )	15.95	1.83	44.23

*1/ Cost of production refers to maintenance cost.*

**Table 5.3a OTHER MAJOR CROPS: PRODUCTION COSTS AND RETURNS, PHILIPPINES, 2013P**

ITEM	ONION		TOMATO
	Red	Multiplier	
(pesos per hectare)			
Gross Returns	234,843	179,899	181,036
Cash Costs	10,303	58,597	70,553
Non-Cash Costs	8,382	33,008	3,279
Imputed Costs	19,201	20,607	16,703
Total Costs	37,886	112,212	90,535
Net Returns	196,957	67,687	90,501
.....			
Net Profit-Cost Ratio	5.20	0.60	1.00
Cost Per Kilogram ( <i>pesos</i> )	3.18	13.31	7.51





## PRICE STATISTICS

## PRICE STATISTICS

**Table 6.1 CONSUMER PRICE INDEX <sup>1/</sup>, PHILIPPINES, 2009-2013**

ITEM	2009	2010	2011	2012	2013P
<b>ALL ITEMS</b>	<b>116.0</b>	<b>120.5</b>	<b>126.1</b>	<b>130.1</b>	<b>133.9</b>
Food and Non-Alcoholic Beverages	124.5	129.5	136.6	139.8	143.7
Alcoholic Beverages and Tobacco	113.0	116.4	122.6	128.7	167.0
Clothing and Footwear	111.2	114.2	118.4	123.9	128.4
Housing, Water, Electricity, Gas and Other Fuels	108.9	114.6	120.3	125.8	127.9
Furnishings, Household Equipment and Routine Maintenance of the House	111.2	114.0	116.8	121.1	125.1
Health	116.0	120.4	124.3	128.1	131.9
Transport	111.6	115.6	122.9	125.5	126.5
Communication	93.6	92.6	92.4	92.5	92.7
Recreation and Culture	104.6	105.2	106.7	109.5	112.0
Education	119.1	124.4	130.3	136.2	142.5
Restaurants and Miscellaneous Goods and Services	113.1	116.0	119.3	123.2	126.1

*1/ 2006 as base year*

*Source: PSA*

**Table 6.2 PRODUCER PRICE INDEX <sup>1/</sup>, PHILIPPINES, 2009-2013**

ITEM	2009	2010	2011	2012	2013P
<b>ALL ITEMS</b>	<b>123.6</b>	<b>131.5</b>	<b>141.6</b>	<b>137.9</b>	<b>140.9</b>
Cereals	133.8	137.3	143.8	151.3	156.1
Vegetables & Legumes	113.5	100.3	134.0	121.4	121.1
Rootcrops and Tubers	119.5	114.8	129.1	137.9	147.2
Fruits	124.9	125.7	138.3	142.3	146.9
Commercial Crops	109.6	155.1	192.2	145.1	138.4
Livestock	123.0	130.4	128.8	128.3	137.9
Poultry	120.7	121.6	122.8	122.9	138.7
Fishery	119.6	118.6	120.4	126.3	127.6

*1/ 2006 as base year*

**Table 6.3 CEREALS: AVERAGE DOMESTIC AND WORLD PRICES BY TYPE, PHILIPPINES, 2009-2013**

ITEM	2009	2010	2011	2012	2013P
<b>DOMESTIC PRICE</b> ( <i>pesos per kilogram</i> )					
<b>Palay/Rice, Well milled</b>					
<i>Farm</i>	14.66	14.87	15.17	16.22	16.93
<i>Wholesale</i>	31.17	31.45	32.06	32.82	34.49
<i>Retail</i>	34.12	34.34	34.73	35.30	36.87
<b>Corngrain</b>					
<i>Corngrain, white</i>					
<i>Farm</i>	11.80	11.00	14.40	13.35	13.81
<i>Wholesale</i>	16.24	15.05	16.41	15.53	15.43
<i>Retail</i>	21.21	19.55	19.07	19.72	18.97
<i>Corngrain, yellow</i>					
<i>Farm</i>	10.44	11.26	11.95	12.42	11.62
<i>Wholesale</i>	13.84	14.41	15.13	15.78	15.93
<i>Retail</i>	19.90	19.26	19.80	21.51	22.04
<b>WORLD PRICE</b> ( <i>US dollar per kilogram</i> )					
<b>Cereals</b>					
<i>Rice</i>					
<i>5% brokens</i>	0.56	0.49	0.54	0.56	0.51
<i>25% brokens</i>	0.46	0.44	0.51	0.54	0.47
<i>Corn</i>					
<i>Yellow</i>	0.17	0.19	0.29	0.30	0.26

Sources: PSA and World Bank

## PRICE STATISTICS

**Table 6.4** SELECTED CROPS: AVERAGE ANNUAL PRICES, PHILIPPINES, 2009-2013

ITEM	2009	2010	2011	2012	2013P
	(pesos per kilogram)				
<b>Coconut</b>					
<i>Copra (corriente)</i>					
<i>Farm</i>	13.73	21.33	32.53	19.28	15.88
<i>Wholesale</i>	12.73	19.14	28.00	16.66	13.16
<i>Matured nuts</i>					
<i>Farm</i>	4.15	5.34	8.05	5.63	5.30
<i>Wholesale</i>	16.45	12.80	18.87	18.44	16.34
<i>Retail</i>	13.85	14.26	19.51	18.83	17.62
<i>Young nuts</i>					
<i>Farm</i>	4.22	5.33	6.71	7.03	6.96
<b>Coffee, dry beans</b>					
<i>Robusta</i>					
<i>Farm</i>	57.62	56.45	71.71	69.27	67.84
<i>Wholesale</i>	63.90	50.84	76.52	-	70.15
<i>Arabica</i>					
<i>Farm</i>	60.22	67.57	69.25	71.14	83.94
<i>Excelsa</i>					
<i>Farm</i>	49.26	48.68	56.14	60.68	65.64
<i>Wholesale</i>	53.79	59.51	-	-	-
<b>Rubber (cup lump)</b>					
<i>Farm</i>	31.76	61.49	75.42	50.06	40.35
<i>Wholesale</i>	30.92	58.54	-	-	-
<b>Banana</b>					
<i>Bungulan</i>					
<i>Farm</i>	8.18	9.09	7.27	7.80	8.22
<i>Wholesale</i>	7.63	6.65	6.72	6.86	7.28
<i>Latundan</i>					
<i>Farm</i>	8.51	9.22	9.41	9.46	10.12
<i>Wholesale</i>	13.90	15.60	16.80	15.80	17.30
<i>Retail</i>	19.00	20.00	21.20	21.60	23.50

**Table 6.4 SELECTED CROPS: AVERAGE ANNUAL ...**(Continued)

ITEM	2009	2010	2011	2012	2013P
	(pesos per kilogram)				
<b>Lakatan</b>					
<i>Farm</i>	11.92	14.26	13.74	14.27	16.78
<i>Wholesale</i>	20.70	24.30	25.83	25.74	28.08
<i>Retail</i>	27.63	29.52	31.50	32.58	37.17
<b>Saba</b>					
<i>Farm</i>	6.19	6.87	6.51	7.01	8.35
<i>Wholesale</i>	10.44	11.34	12.06	13.05	13.77
<i>Retail</i>	15.21	16.02	16.11	16.74	17.64
<b>Pineapple, Hawaiian</b>					
<i>Farm</i>	5.26	5.02	6.35	7.25	7.08
<i>Wholesale</i>	8.19	9.85	9.76	10.25	10.81
<i>Retail</i>	13.40	14.00	15.20	16.13	16.69
<b>Mango, Carabao</b>					
<i>Farm</i>	29.11	28.22	29.23	28.94	28.64
<i>Wholesale</i>	40.73	43.36	46.16	47.96	48.79
<i>Retail</i>	60.78	62.35	65.48	66.11	66.53
<b>Cassava</b>					
<i>Farm</i>	5.79	5.73	6.40	7.09	7.63
<i>Wholesale</i>	7.46	7.83	7.66	7.77	8.61
<b>Camote</b>					
<i>Farm</i>	9.36	10.03	11.39	11.87	12.19
<i>Wholesale</i>	13.69	14.39	14.72	15.77	17.4
<i>Retail</i>	21.68	22.70	24.20	26.28	28.15

## PRICE STATISTICS

**Table 6.5** SELECTED LIVESTOCK AND POULTRY: AVERAGE ANNUAL PRICES, PHILIPPINES, 2009-2013

ITEM	2009	2010	2011	2012	2013P
	(pesos per kilogram)				
<b>LIVESTOCK</b> <sup>2/</sup>					
Carabao					
<i>Farm (liveweight)</i>	63.73	67.95	68.31	69.75	72.98
<i>Wholesale selling</i>	63.27	61.93	60.76	62.46	64.34
Cattle					
<i>Farm (liveweight)</i>	77.07	81.79	83.73	84.36	87.12
<i>Wholesale selling</i>	74.16	76.30	74.16	75.56	76.90
<i>Retail (beef lean meat)</i>	211.71	222.51	226.95	229.4	233.62
Hog					
<i>Farm (liveweight)</i>	85.72	90.56	89.08	88.26	95.71
<i>Wholesale selling</i>	85.47	91.76	96.13	89.71	99.90
<i>Retail (pork lean meat)</i>	163.54	173.90	173.86	172.93	179.36
Goat					
<i>Farm</i>	87.85	93.17	98.58	101.88	106.74
<i>Wholesale selling</i>	83.03	93.88	90.95	92.22	96.37
<b>POULTRY</b>					
Chicken ( <i>broiler</i> ) <sup>2/</sup>					
<i>Farm</i>	89.69	94.64	95.23	95.89	87.12
<i>Wholesale</i> <sup>3/</sup>	88.19	77.32	82.74	84.18	81.43
<i>Retail</i>	102.96	113.08	118.05	117.07	112.86
Duck <sup>2/</sup>					
<i>Farm</i>	76.48	86.12	84.46	87.66	90.85

2/ Backyard

3/ Metro Manila

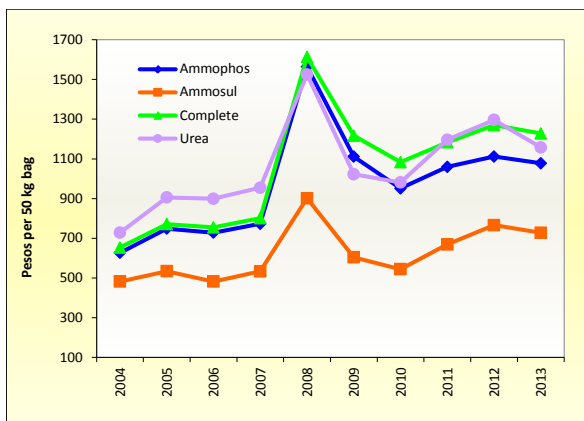
**Table 6.6** SELECTED FISH SPECIES: AVERAGE ANNUAL PRICES,  
PHILIPPINES, 2009-2013

ITEM	2009	2010	2011	2012	2013P
	(pesos per kilogram)				
<b>FISHERY PRODUCTS</b>					
Bangus ( <i>Milkfish</i> )					
<i>Wholesale</i>	93.58	90.69	92.32	104.49	100.46
<i>Retail</i>	114.37	112.56	112.86	125.01	123.84
Dilis ( <i>Anchovies</i> )					
<i>Wholesale</i>	47.91	44.45	47.83	54.30	50.42
<i>Retail</i>	73.85	74.22	79.65	83.77	84.05
Galunggong ( <i>Roundscad</i> )					
<i>Wholesale</i>	64.82	64.25	77.58	83.14	82.29
<i>Retail</i>	87.99	87.45	100.47	107.68	108.02
Sapsap ( <i>Slipmouth</i> )					
<i>Wholesale</i>	70.72	66.13	73.02	87.52	83.80
<i>Retail</i>	107.27	112.51	115.64	126.1	128.14
Tilapia					
<i>Wholesale</i>	68.99	67.89	73.51	75.36	74.07
<i>Retail</i>	86.49	87.61	90.80	95.96	98.17
Tulingan ( <i>Frigate Tuna</i> )					
<i>Wholesale</i>	78.93	77.97	88.33	89.36	88.64
<i>Retail</i>	92.65	92.31	103.08	110.4	111.57

## PRICE STATISTICS

**Table 6.7 FERTILIZERS: AVERAGE DEALERS' PRICES BY GRADE  
PHILIPPINES, 2009-2013**

ITEM	2009	2010	2011	2012	2013P
(Pesos per 50 kg bag)					
UREA	1,022.69	981.11	1,196.29	1,296.32	1,158.02
AMMOSUL	604.43	544.49	668.86	766.18	727.91
COMPLETE	1,216.54	1,083.41	1,183.24	1,269.98	1,227.86
AMMOPHOS	1,111.08	951.47	1,059.88	1,111.92	1,077.52



*Figure 5. Fertilizers: Average Dealers' Prices by Grade, Philippines, 2004-2013*





## **AGRICULTURAL FOREIGN TRADE STATISTICS**

## AGRICULTURAL FOREIGN TRADE STATISTICS

**Table 7.1 TOP AGRICULTURAL EXPORTS: VOLUME AND VALUE, PHILIPPINES, 2009-2013P**

ITEM	2009	2010	2011	2012	2013P
<b>VOLUME OF TOP EXPORTS</b> ( <i>'000 mt</i> )					
Coconut Oil	832.94	1,348.74	826.72	884.46	961.56
Bananas, <i>Fresh</i>	1,664.05	1,590.07	2,055.51	2,646.12	2,876.95
Tuna	105.25	110.49	80.13	61.71	49.99
Pineapple & Products	487.70	406.00	582.68	742.61	698.87
Desiccated Coconut	116.42	108.94	108.87	68.58	33.39
Seaweeds & Carageenan	24.08	34.16	46.13	33.91	22.95
Tobacco Manufactured	17.24	23.49	28.16	15.80	7.34
Copra Oil Cake	399.80	723.08	314.34	462.07	409.26
Centrifugal Sugar	119.02	61.22	578.74	201.93	296.62
Shrimps & Prawns	17.49	16.44	14.53	6.52	15.68
<b>VALUE OF TOTAL AGRICULTURAL EXPORTS</b>					
( <i>FOB in Million US\$</i> )	<b>3,135.75</b>	<b>4,101.09</b>	<b>5,431.76</b>	<b>5,037.94</b>	<b>6,318.00</b>
<b>VALUE OF TOP EXPORTS</b> ( <i>FOB in million US\$</i> )					
Coconut Oil	594.49	1,265.93	1,425.45	1,041.48	950.55
Bananas, <i>Fresh</i>	344.43	319.30	472.38	646.66	911.75
Tuna	334.82	359.40	314.58	455.10	664.86
Pineapple & Products	263.27	242.58	345.64	414.91	416.80
Desiccated Coconut	145.76	152.61	286.77	197.00	181.30
Seaweeds & Carageenan	98.68	154.24	210.78	184.15	229.61
Tobacco Manufactured	109.36	161.16	199.97	157.46	240.34
Copra Oil Cake	47.94	78.38	58.80	124.61	239.86
Centrifugal Sugar	46.77	29.62	351.45	108.80	249.79
Shrimps & Prawns	111.85	106.14	123.07	75.42	140.21

Source: PSA

**Table 7.2 TOP AGRICULTURAL EXPORTS: VOLUME AND VALUE, BY MAJOR COUNTRY OF DESTINATION, PHILIPPINES, 2013P**

COMMODITY/ COUNTRY OF DESTINATION	VOLUME	VALUE	% SHARE (VALUE)
<b>VOLUME AND VALUE</b> ('000 mt, FOB in million US \$)			
<b>COCONUT OIL</b> ( <i>crude &amp; refined</i> )	<b>961.56</b>	<b>950.55</b>	<b>100.00</b>
United States of America	402.64	410.21	43.16
Netherlands	299.58	275.12	28.94
Indonesia ( <i>Includes West Irian</i> )	49.50	42.15	4.43
China, People's Republic of	38.35	39.65	4.17
Japan ( <i>Excludes Okinawa</i> )	38.02	37.00	3.89
Others	133.47	146.42	15.40
<b>BANANAS, Fresh</b>	<b>2,876.95</b>	<b>911.75</b>	<b>100.00</b>
Japan ( <i>Excludes Okinawa</i> )	918.11	327.90	35.96
China, People's Republic of	413.44	130.97	14.37
Korea, Republic of South	364.62	104.96	11.51
United Arab Emirates	355.97	78.96	8.66
United States of America	114.60	48.78	5.35
Others	710.21	220.17	24.15
<b>TUNA</b>	<b>49.99</b>	<b>664.86</b>	<b>100.00</b>
United States of America	10.99	137.96	20.75
Germany	3.47	84.04	12.64
Japan ( <i>Excludes Okinawa</i> )	5.28	95.42	14.35
UK Great Britain & N. Ireland	4.59	73.12	11.00
Italy	6.02	67.27	10.12
Others	19.64	207.05	31.14
<b>PINEAPPLE AND PINEAPPLE PRODUCTS</b>	<b>698.87</b>	<b>416.80</b>	<b>100.00</b>
United States of America	208.06	176.90	42.44
Japan ( <i>Excludes Okinawa</i> )	184.05	68.88	16.53
Korea, Republic of South	109.68	46.70	11.21
Netherlands	14.82	17.35	4.16
China, People's Republic of	30.92	14.44	3.47
Others	151.35	92.53	22.20

## AGRICULTURAL FOREIGN TRADE STATISTICS

**Table 7.2 TOP AGRICULTURAL EXPORTS: VOLUME ...*(Continued)***

COMMODITY/ COUNTRY OF DESTINATION	VOLUME	VALUE	% SHARE (VALUE)
<b>DESSICATED COCONUT</b>	<b>33.39</b>	<b>181.30</b>	100.00
United States of America	10.16	43.47	23.98
Singapore	6.41	13.90	7.67
Netherlands	1.27	12.74	7.02
Belgium	0.94	11.12	6.13
Australia	1.22	8.82	4.87
Others	13.38	91.25	50.33
<b>SEAWEEDS &amp; CARAGEENAN</b>	<b>22.95</b>	<b>229.61</b>	100.00
United States of America	5.81	57.15	24.89
Belgium	0.49	27.67	12.05
Spain	0.66	16.55	7.21
Korea, Republic of South	0.83	15.67	6.83
Denmark	0.86	10.19	4.44
Others	14.30	102.38	44.59
<b>TOBACCO MANUFACTURED</b>	<b>7.34</b>	<b>240.24</b>	100.00
Thailand	2.27	88.48	36.83
Indonesia ( <i>Includes West Irian</i> )	0.38	41.67	17.34
Korea, Republic of South	0.71	42.83	17.83
Singapore	0.43	12.56	5.23
Vietnam	0.82	17.78	7.40
Others	2.72	36.92	15.37
<b>COPRA OIL CAKE</b>	<b>409.26</b>	<b>239.86</b>	100.00
Korea, Republic of South	179.91	67.52	28.15
Vietnam	117.64	36.31	15.14
United States of America	33.12	35.13	14.65
China, People's Republic of	60.03	28.29	11.79
Netherlands	0.00	27.47	11.45
Others	18.56	45.14	18.82
<b>CENTRIFUGAL SUGAR</b>	<b>296.62</b>	<b>249.79</b>	<b>100.00</b>
Japan ( <i>Excludes Okinawa</i> )	111.77	92.34	36.97
United States of America	118.57	87.30	34.95

**Table 7.2 TOP AGRICULTURAL EXPORTS: VOLUME ...*(Continued)***

COMMODITY/ COUNTRY OF DESTINATION	VOLUME	VALUE	% SHARE (VALUE)
Korea, Republic of South	58.31	52.21	20.90
Indonesia <i>(Includes West Irian)</i>	6.71	6.87	2.75
Italy	0.00	6.21	2.49
Others	1.25	4.86	1.95
<b>SHRIMPS &amp; PRAWNS</b>	<b>15.68</b>	<b>140.21</b>	<b>100.00</b>
Japan <i>(Excludes Okinawa)</i>	5.01	43.61	31.10
United States Of America	0.94	21.59	15.40
France	0.06	13.70	9.77
China, People'S Republic Of	2.23	13.34	9.52
Korea, Republic Of South	1.54	9.21	6.57
Others	5.91	38.77	27.65

Source: PSA

## AGRICULTURAL FOREIGN TRADE STATISTICS

**Table 7.3 EXPORTS OF SELECTED COMMODITIES: VOLUME AND VALUE, PHILIPPINES, 2009-2013P**

ITEM	2009	2010	2011	2012	2013P
<b>VOLUME OF EXPORTS ('000 mt)</b>					
Abaca	0.35	0.09	0.08	0.08	0.27
Nata de Coco	6.05	5.34	6.35	5.05	3.24
Asparagus	0.30	0.22	0.48	0.52	0.48
Papaws ( <i>fresh/dried</i> )	2.55	1.51	3.04	3.11	5.06
Shallots	6.58	7.54	14.01	5.82	2.52
Onions ( <i>fresh/dried/powdered</i> )	a/	0.32	a/	a/	0.12
Kaong	1.26	1.05	1.09	0.63	0.06
Manioc ( <i>Cassava</i> ) & Tapioca	1.04	4.25	1.10	0.58	0.3
Coconut ( <i>Young</i> )	1.61	2.45	6.59	1.61	2.06
Yam ( <i>fresh/dried/powdered</i> )	0.37	0.41	0.46	0.34	0.15
Garlic	a/	0.07	0.14	0.11	0.03
<b>VALUE OF EXPORTS (FOB in million US \$)</b>					
Abaca	10.24	13.43	13.41	13.41	4.25
Nata de Coco	6.03	5.89	6.66	5.08	3.62
Asparagus	0.65	0.53	1.22	1.53	1.51
Papaws ( <i>fresh/dried</i> )	3.17	2.25	3.61	3.82	6.6
Shallots	2.43	2.88	6.54	2.64	1.51
Onions ( <i>fresh/dried/powdered</i> )	a/	0.24	0.07	0.06	0.05
Kaong	2.29	1.92	2.09	1.12	0.17
Manioc ( <i>Cassava</i> ) & Tapioca	1.32	2.20	1.56	0.97	0.68
Coconut ( <i>Young</i> )	0.35	0.63	2.99	1.39	2.07
Yam ( <i>fresh/dried/powdered</i> )	0.65	0.70	0.79	1.08	1.39
Garlic	0.03	0.27	0.79	0.77	0.74

a/less than 0.01

Source: PSA

**Table 7.4 TOP AGRICULTURAL IMPORTS: VOLUME AND VALUE, PHILIPPINES, 2009-2013P**

ITEM	2009	2010	2011	2012	2013P
<b>VOLUME OF TOP IMPORTS ('000 mt)</b>					
Wheat (Including Spelt) and Meslin	3,028.18	1,973.28	2,787.17	3,000.30	2,471.84
Soyabean Oil/Cake Meal	1,267.63	1,043.69	2,068.93	1,455.57	1,513.32
Milk & Cream & Products	256.64	288.92	273.87	282.43	296.54
Rice	1,755.18	2,379.11	707.67	1,042.14	398.58
Fertilizer Manufactured	625.63	913.63	889.97	991.04	889.64
Coffee	51.09	72.25	51.61	104.57	90.87
Urea	626.64	574.48	577.51	616.03	560.66
Meat of Bovine Animals	84.02	93.82	83.99	82.58	75.42
Tobacco Unmanufactured	46.77	37.61	54.54	52.59	56.32
Maize	303.12	88.47	66.19	136.57	341.60
<b>VALUE OF TOTAL AGRICULTURAL IMPORTS</b>					
(CIF in million US \$)	<b>6,079.80</b>	<b>7,399.79</b>	<b>7,839.93</b>	<b>8,168.33</b>	<b>7,801.79</b>
<b>VALUE OF TOP IMPORTS (CIF in million US \$)</b>					
Wheat (Including Spelt) and Meslin	816.45	547.18	961.62	975.91	868.22
Soyabean Oil/Cake Meal	422.16	402.35	576.62	689.32	758.62
Milk & Cream & Products	385.68	592.27	688.79	644.35	750.78
Rice	1,039.64	1,652.52	383.15	438.08	172.09
Fertilizer Manufactured	168.88	270.46	327.13	385.72	318.81
Coffee	88.13	117.99	120.15	251.14	214.51
Urea	185.93	179.46	233.92	252.39	196.66
Meat of Bovine Animals	143.83	190.86	238.87	238.70	235.34
Tobacco Unmanufactured	192.53	120.95	154.33	144.59	155.62
Maize	104.21	77.23	48.02	88.52	138.46

Source: PSA

## AGRICULTURAL FOREIGN TRADE STATISTICS

**Table 7.5 OTHER MAJOR AGRICULTURAL IMPORTS: VOLUME AND VALUE, PHILIPPINES, 2009-2013P**

ITEM	2009	2010	2011	2012	2013P
<b>VOLUME OF IMPORTS</b> ('000 mt)					
<b>LIVESTOCK &amp; POULTRY</b>					
Live Bovine ( <i>million head</i> )	0.01	0.01	0.02	0.02	0.02
Meat of Bovine, <i>frozen</i>	84.02	93.82	83.99	82.58	75.40
Live Chicken ( <i>million head</i> )	0.01	a/	a/	a/	a/
Chicken Meat, <i>frozen</i>	61.44	98.00	112.11	107.26	96.55
<b>VEGETABLES</b>					
Garlic	38.28	26.18	24.21	11.25	5.22
Onion	10.81	12.07	5.76	19.35	9.28
Cauliflower and Headed					
Broccoli	0.14	0.24	0.12	0.11	0.02
Potatoes	20.20	10.15	8.40	6.73	4.39
<b>VALUE OF IMPORTS</b> (CIF in million US \$)					
<b>LIVESTOCK &amp; POULTRY</b>					
Live Bovine	6.15	8.74	11.09	19.55	18.57
Meat of Bovine, <i>frozen</i>	143.83	190.86	238.87	238.70	235.21
Live Chicken	0.85	0.34	0.36	0.36	0.51
Chicken Meat, <i>frozen</i>	41.42	67.93	84.20	106.98	96.09
<b>VEGETABLES</b>					
Garlic	7.08	6.22	8.16	4.16	3.26
Onion	3.30	4.67	4.16	4.65	3.32
Cauliflower and Headed					
Broccoli	0.07	0.17	0.13	0.20	0.05
Potatoes	6.44	3.91	3.18	2.42	1.31

a/less than 0.01

Source: PSA



**Table 7.6 TOP AGRICULTURAL IMPORTS: VOLUME AND VALUE, BY MAJOR COUNTRY OF ORIGIN, PHILIPPINES, 2013P**

COMMODITY/ COUNTRY OF ORIGIN	VOLUME	VALUE	% SHARE (VALUE)
<b>VOLUME AND VALUE</b> ('000 mt, CIF in million US \$)			
<b>WHEAT (including spelt) and MESLIN</b>	<b>2,471.84</b>	<b>868.22</b>	<b>100.00</b>
United States of America	1,502.21	548.52	63.18
Canada	296.12	105.65	12.17
Australia	201.34	72.79	8.38
Ukraine ( <i>Ukrainian S.S.R.</i> )	189.68	57.02	6.57
India	102.45	28.79	3.32
Others	180.04	55.45	6.39
<b>SOYABEAN OIL/CAKE MEAL</b>	<b>1,513.32</b>	<b>758.62</b>	<b>100.00</b>
United States of America	701.42	379.14	49.98
Argentina	780.64	360.55	47.53
India	23.03	13.67	1.80
Brazil	5.42	3.85	0.51
Taiwan ( <i>Republic of China</i> )	0.56	0.42	0.06
Others	2.26	1.00	0.13
<b>MILK &amp; CREAM &amp; PRODUCTS</b>	<b>296.54</b>	<b>750.78</b>	<b>100.00</b>
New Zealand ( <i>Excludes Western Samoa</i> )	89.88	268.61	35.78
United States of America	77.49	263.49	35.10
Australia	17.71	51.65	6.88
Netherlands	9.97	28.69	3.82
Thailand	16.75	20.35	2.71
Others	84.74	117.99	15.72
<b>RICE</b>	<b>398.58</b>	<b>172.09</b>	<b>100.00</b>
Vietnam	215.78	102.45	59.54
Thailand	160.01	53.99	31.37
India	13.54	10.23	5.95

## AGRICULTURAL FOREIGN TRADE STATISTICS

**Table 7.6 TOP AGRICULTURAL IMPORTS: VOLUME ...**(Continued)

COMMODITY/ COUNTRY OF ORIGIN	VOLUME	VALUE	% SHARE (VALUE)
China, People's Republic of	4.81	3.88	2.26
Singapore	4.23	1.44	0.84
Others	0.20	0.08	0.05
<b>FERTILIZER MANUFACTURED</b>	<b>889.64</b>	<b>318.81</b>	<b>100.00</b>
China, People's Republic of	470.83	156.55	49.10
Canada	65.20	27.46	8.61
Japan ( <i>Excludes Okinawa</i> )	77.60	18.25	5.72
Korea, Republic of South	49.43	18.25	5.72
Vietnam	38.05	16.41	5.15
Others	188.53	81.89	25.69
<b>UREA</b>	<b>560.66</b>	<b>196.66</b>	<b>100.00</b>
China, People's Republic of	196.40	63.67	32.38
Malaysia ( <i>Federation of Malaya</i> )	154.41	56.12	28.54
Indonesia ( <i>Includes West Irian</i> )	129.49	50.59	25.72
Qatar	27.50	10.60	5.39
Singapore	24.00	5.49	2.79
Others	28.86	10.19	5.18
<b>MEAT OF BOVINE ANIMALS</b>	<b>75.42</b>	<b>235.34</b>	<b>100.00</b>
Australia	24.79	88.01	37.40
India	27.61	80.43	34.18
Brazil	9.75	25.50	10.84
New Zealand ( <i>Excludes Western Samoa</i> )	6.76	23.42	9.95
United States of America	5.09	14.56	6.19
Others	1.41	3.42	1.45
<b>TOBACCO UNMANUFACTURED</b>	<b>56.32</b>	<b>155.62</b>	<b>100.00</b>
China, People's Republic of	10.62	23.59	15.16
Turkey	9.95	18.21	11.70
Brazil	4.45	16.96	10.90

**Table 7.6 TOP AGRICULTURAL IMPORTS: VOLUME ...** (Continued)

COMMODITY/ COUNTRY OF ORIGIN	VOLUME	VALUE	% SHARE (VALUE)
Belgium	3.51	16.79	10.79
Malaysia ( <i>Federation of Malaya</i> )	5.05	16.07	10.32
Others	22.74	64.01	41.13
<b>COFFEE</b>	<b>90.87</b>	<b>214.51</b>	<b>100.00</b>
Indonesia ( <i>Includes West Irian</i> )	53.51	123.59	57.61
Vietnam	19.93	44.29	20.65
Malaysia ( <i>Federation of Malaya</i> )	4.14	27.69	12.91
Thailand	3.10	11.05	5.15
Singapore	8.67	2.94	1.37
Others	1.51	4.96	2.31
<b>MAIZE</b>	<b>341.60</b>	<b>138.46</b>	<b>100.00</b>
Thailand	299.08	100.87	72.85
South Africa, Republic of <sup>7/</sup>	3.75	13.06	9.43
Brazil	3.23	8.06	5.82
India	18.70	4.58	3.31
United States of America	2.17	4.31	3.11
Others	14.68	7.58	5.47

Source: PSA

## AGRICULTURAL FOREIGN TRADE STATISTICS

**Table 7.7 AGRICULTURAL TRADE BALANCES OF THE PHILIPPINES WITH ITS MAJOR TRADING PARTNERS, 2009-2013P**

ITEM	2009	2010	2011	2012	2013P
	(Export in FOB M US \$; Import in CIF M US \$)				
<b>PHILIPPINES</b>					
<i>Agricultural Exports</i>	3,135.75	4,101.09	5,431.76	5,037.94	6,318.00
<i>Agricultural Imports</i>	6,079.80	7,399.79	7,839.93	8,168.33	7,801.79
<i>Trade Balance</i>	(2,944.05)	(3,298.70)	(2,408.17)	(3,130.39)	(1,483.79)
<b>AUSTRALIA</b>					
<i>Agricultural Exports</i>	31.09	35.65	52.32	48.03	48.87
<i>Agricultural Imports</i>	261.73	260.98	564.21	719.66	338.61
<i>Trade Balance</i>	(230.64)	(225.33)	(511.89)	(671.63)	(289.74)
<b>JAPAN</b>					
<i>Agricultural Exports</i>	452.86	432.02	653.05	691.85	887.42
<i>Agricultural Imports</i>	96.38	117.41	138.67	116.17	93.31
<i>Trade Balance</i>	356.47	341.61	514.38	575.68	794.11
<b>USA</b>					
<i>Agricultural Exports</i>	777.53	961.92	1,454.27	1,203.45	1,422.39
<i>Agricultural Imports</i>	1,069.04	1,142.38	1,655.15	1,765.35	1,747.54
<i>Trade Balance</i>	(291.51)	(180.46)	(200.88)	(561.90)	(325.15)
<b>ASEAN</b>					
<i>Agricultural Exports</i>	486.28	608.75	920.71	857.68	946.52
<i>Agricultural Imports</i>	1,970.84	2,863.46	2,186.69	2,206.89	1,925.10
<i>Trade Balance</i>	(1,484.56)	(2,254.72)	(1,265.98)	(1,349.21)	(978.58)
<b>EUROPEAN UNION</b>					
<i>Agricultural Exports</i>	606.63	1,017.05	1,066.03	911.75	1,072.00
<i>Agricultural Imports</i>	486.93	587.96	607.94	631.93	695.28
<i>Trade Balance</i>	119.69	429.09	458.09	279.82	376.72
<b>Rest of the World</b>					
<i>Agricultural Exports</i>	781.36	1,045.69	1,285.39	1,325.18	1,940.80
<i>Agricultural Imports</i>	2,194.87	2,427.60	2,687.26	2,728.34	3,001.96
<i>Trade Balance</i>	(1,413.51)	(1,381.91)	(1,401.87)	(1,403.16)	(1,061.16)



## **SUPPLY UTILIZATION ACCOUNTS**

## SUPPLY UTILIZATION ACCOUNTS

**Table 8.1 RICE: SUPPLY UTILIZATION ACCOUNTS, PHILIPPINES, 2009-2013**

ITEM	2009	2010	2011	2012	2013P
			('000 mt)		
<b>Gross Supply</b>	<b>15,027</b>	<b>15,322</b>	<b>15,042</b>	<b>15,418</b>	<b>14,966</b>
Beginning Stock	2,639	2,629	3,424	2,618	2,509
Production	10,633	10,315	10,911	11,793	12,059
Imports	1,755	2,378	707	1,007	398
<b>Utilization</b>					
Exports	a/	a/	a/	a/	1
Seeds	222	214	223	230	233
Feeds & Waste	691	670	709	767	784
Processing	425	413	436	472	482
Net Food Disposable	11,060	10,601	11,056	11,440	11,340
Per Capita NFD					
<i>kilograms/year</i>	119.92	114.81	117.39	119.45	116.48
<i>grams/day</i>	328.55	314.55	321.62	327.26	319.12
Ending Stock	2,629	3,424	2,618	2,509	2,126

a/ Less than 1 thousand metric ton

**Table 8.2 CORN: SUPPLY UTILIZATION ACCOUNTS, PHILIPPINES, 2009-2013**

ITEM	2009	2010	2011	2012	2013P
			('000 mt)		
<b>Gross Supply</b>	<b>7,535</b>	<b>6,719</b>	<b>7,190</b>	<b>7,709</b>	<b>7,880</b>
Beginning Stock	198	254	153	166	161
Production	7,034	6,377	6,971	7,407	7,377
Imports	303	88	66	136	342
<b>Utilization</b>					
Exports	1	a/	a/	a/	a/
Seeds	54	50	51	52	51
Feeds & Waste	4,572	4,145	4,531	4,815	4,795
Processing	938	851	930	988	984
Net Food Disposable	1,716	1,520	1,512	1,693	1,881
Per Capita NFD					
<i>kilograms/year</i>	18.61	16.46	16.05	17.68	19.32
<i>grams/day</i>	50.99	45.10	43.97	48.44	52.93
Ending Stock	254	153	166	161	169

a/ Less than 1 thousand metric ton

**Table 8.3 PAPAYA: SUPPLY UTILIZATION ACCOUNTS, PHILIPPINES, 2009-2013**

ITEM	2009	2010	2011	2012	2013P
	(mt)				
<b>Gross Supply</b>	<b>176,656</b>	<b>165,981</b>	<b>157,907</b>	<b>164,821</b>	<b>166,261</b>
Production	176,656	165,981	157,907	164,821	166,261
Imports	-	-	-	-	-
<b>Utilization</b>					
Exports	2,305	1,391	2,945	3,065	5,002
Feeds & Waste	10,461	9,875	9,298	9,705	9,676
Net Food Disposable	163,890	154,715	145,664	152,051	151,583
Per Capita NFD					
<i>kilograms/year</i>	1.78	1.68	1.55	1.59	1.56
<i>grams/day</i>	4.88	4.60	4.25	4.36	4.27

**Table 8.4 CABBAGE: SUPPLY UTILIZATION ACCOUNTS, PHILIPPINES, 2009-2013**

ITEM	2009	2010	2011	2012	2013P
	(mt)				
<b>Gross Supply</b>	<b>124,712</b>	<b>128,964</b>	<b>125,309</b>	<b>126,356</b>	<b>127,444</b>
Production	124,712	128,964	125,309	126,356	127,444
Imports	-	-	-	-	-
<b>Utilization</b>					
Exports	-	-	4	-	-
Seeds	31	32	32	32	31
Feeds & Waste	9,977	10,317	10,024	10,108	10,196
Net Food Disposable	114,704	118,615	115,249	116,216	117,217
Per Capita NFD					
<i>kilograms/year</i>	1.24	1.28	1.22	1.21	1.20
<i>grams/day</i>	3.40	3.51	3.34	3.32	3.29

## SUPPLY UTILIZATION ACCOUNTS

**Table 8.5 CASSAVA: SUPPLY UTILIZATION ACCOUNTS, PHILIPPINES, 2009-2013**

ITEM	2009	2010	2011	2012	2013P
	(mt)				
<b>Gross Supply</b>	<b>2,043,719</b>	<b>2,125,954</b>	<b>2,215,529</b>	<b>2,223,222</b>	<b>2,376,404</b>
Production	2,043,719	2,101,454	2,209,684	2,223,144	2,360,527
Imports	-	24,500	5,845	78	15,877
<b>Utilization</b>					
Exports	982	1,011	1,098	583	66
Feeds & Waste	122,623	126,087	132,581	133,389	141,632
Processing	1,715,899	1,784,952	1,860,122	1,867,017	1,996,124
Net Food					
Disposable	204,215	213,904	221,728	222,234	238,582
Per Capita NFD					
<i>kilograms/year</i>	2.21	2.32	2.35	2.32	2.45
<i>grams/day</i>	6.05	6.36	6.44	6.36	6.71

**Table 8.6 MONGO: SUPPLY UTILIZATION ACCOUNTS, PHILIPPINES, 2009-2013**

ITEM	2009	2010	2011	2012	2013P
	(mt)				
<b>Gross Supply</b>	<b>58,260</b>	<b>57,869</b>	<b>57,493</b>	<b>64,541</b>	<b>66,086</b>
Production	27,694	27,055	32,960	32,364	32,421
Imports	30,566	30,814	24,533	32,177	33,665
<b>Utilization</b>					
Exports	15	422	275	77	28
Seeds	174	180	204	200	196
Feeds & Waste	291	287	286	322	330
Net Food Disposable	57,780	56,980	56,728	63,942	65,532
Per Capita NFD					
<i>kilograms/year</i>	0.63	0.62	0.60	0.67	0.67
<i>grams/day</i>	1.73	1.70	1.64	1.84	1.84



**Table 8.7 CHICKEN (Dressed): SUPPLY UTILIZATION ACCOUNTS, PHILIPPINES, 2009-2013**

ITEM	2009	2010	2011	2012	2013P
	(mt)				
<b>Gross Supply</b>	<b>888,121</b>	<b>966,587</b>	<b>1,032,170</b>	<b>1,092,234</b>	<b>1,142,578</b>
Production	826,677	868,583	920,061	984,976	1,046,929
Imports	61,444	98,004	112,109	107,258	95,649
<b>Utilization</b>					
Exports	4,548	5,505	9,902	5,800	1,883
Net Food Disposable	883,573	961,082	1,022,268	1,086,434	1,140,695
Per Capita NFD					
<i>kilograms/year</i>	9.58	10.41	10.85	11.34	11.72
<i>grams/day</i>	26.25	28.52	29.73	31.07	32.11

**Table 8.8 BEEF: SUPPLY UTILIZATION ACCOUNTS, PHILIPPINES, 2009-2013**

ITEM	2009	2010	2011	2012	2013P
	(mt)				
<b>Gross Supply</b>	<b>231,248</b>	<b>244,816</b>	<b>244,875</b>	<b>244,143</b>	<b>248,391</b>
Production	189,707	194,754	196,233	194,810	197,957
Imports	41,541	50,062	48,642	49,333	50,434
<b>Utilization</b>					
Exports	-	1	-	2	27
Processing	18,971	19,475	19,623	19,481	19,796
Carcass					
Net Food Disposable	183,814	194,559	195,409	195,814	199,776
Per Capita NFD					
<i>kilograms/year</i>	1.99	2.11	2.07	2.04	2.05
<i>grams/day</i>	5.45	5.78	5.67	5.59	5.62
Offals					
Net Food Disposable	28,463	30,781	29,843	28,845	28,792
Per Capita NFD					
<i>kilograms/year</i>	0.31	0.33	0.32	0.30	0.30
<i>grams/day</i>	0.85	0.90	0.88	0.82	0.82

## SUPPLY UTILIZATION ACCOUNTS

**Table 8.9 MILKFISH: SUPPLY UTILIZATION ACCOUNTS  
PHILIPPINES, 2009-2013**

ITEM	2009	2010	2011	2012	2013P
	(mt)				
<b>Gross Supply</b>	<b>356,961</b>	<b>357,961</b>	<b>378,459</b>	<b>391,496</b>	<b>406,245</b>
Production	356,935	357,919	378,299	391,330	405,783
Imports	26	42	160	166	462
<b>Utilization</b>					
Exports	2,909	2,984	3,465	2,297	3,965
Feeds & Waste	10,708	10,738	11,349	11,740	12,173
Processing	114,219	114,534	121,056	125,226	129,851
Net Food Disposable	229,125	229,705	242,589	252,233	260,256
Per Capita NFD					
<i>kilograms/year</i>	2.48	2.49	2.58	2.63	2.67
<i>grams/day</i>	6.79	6.82	7.07	7.21	7.32

**Table 8.10 TILAPIA: SUPPLY UTILIZATION ACCOUNTS  
PHILIPPINES, 2009-2013**

ITEM	2009	2010	2011	2012	2013P
	(mt)				
<b>Gross Supply</b>	<b>304,378</b>	<b>303,735</b>	<b>303,447</b>	<b>307,975</b>	<b>317,780</b>
Production	304,374	303,735	303,170	307,975	317,756
Imports	4	-	277	-	24
<b>Utilization</b>					
Exports	6	-	-	-	4,162
Feeds & Waste	9,131	9,112	9,095	9,239	9,533
Net Food Disposable	295,241	294,623	294,351	298,736	304,085
Per Capita NFD					
<i>kilograms/year</i>	3.20	3.19	3.13	3.12	3.12
<i>grams/day</i>	8.77	8.74	8.58	8.55	8.56

**TASK FORCE ON  
Updating and Revision of  
SELECTED STATISTICS ON AGRICULTURE 2014**

**RODRIGO N. LABUGUEN**  
*Chair*

**JING B. JALISAN**  
*Co-Chair*

Focal Persons

<b>MARIA CAROL G. DURAN</b>	- AASID
<b>ELIZABETH B. CABRERA</b>	- LPSD
<b>REINELDA P. ADRIANO</b>	- FSD
<b>MICHELLE D. GUSTILO</b>	- CSD
<b>ANITA M. ILAO</b>	- AMSAD

Publishing Staff

**QUIRINO G. SANTOS, JR.**  
*Graphic Designer*

**HAIDEE D.T. ORELLANA**  
*Circulation*

Advisers

**ROMEO S. RECIDÉ**  
*Director*

**RATELIETA T. MILLENDEZ**  
*OIC-Office of the Assistant Director*