



REPUBLIC OF THE PHILIPPINES  
PHILIPPINE STATISTICS AUTHORITY BOARD

---

**PSA Board Resolution No. 3**  
Series of 2023

**ENJOINING ALL NATIONAL GOVERNMENT AGENCIES  
TO PROVIDE ASSISTANCE FOR THE CONDUCT  
OF THE 2022 CENSUS OF AGRICULTURE AND FISHERIES**

**WHEREAS**, Executive Order (EO) No. 352, otherwise known as the Designation of Statistical Activities That Will Generate Critical Data for Decision-Making of the Government and the Private Sector, issued on 01 July 1996, designates the conduct of the Census of Agriculture and Fisheries (CAF) every ten years with the objective of providing government planners and policy makers with data on which to base their plans for the country's development;

**WHEREAS**, Section 6 of Republic Act (RA) No. 10625, otherwise known as the Philippine Statistical Act of 2013, mandates the Philippine Statistics Authority (PSA) to prepare and conduct periodic censuses on population, housing, agriculture, fisheries, business, industry and other sectors of the economy;

**WHEREAS**, the latest CAF was undertaken in 2013 with 2012 as reference year and the next census will be conducted in September 2023 with 01 January to 31 December 2022 as reference period to come up with data on agricultural and fisheries structures; to provide sampling frame for other statistical undertaking; and to provide basic data for use in national as well as local development planning;

**WHEREAS**, the PSA has an organized field staff complement in all regions and provinces with the expertise to carry out data collection activities;

**WHEREAS**, as in the previous censuses, the assistance to be provided by other government agencies will be instrumental to the success of the 2022 CAF;

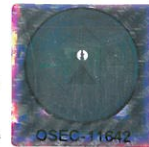
*gfw*

**NOW, THEREFORE, BE IT RESOLVED**, that the PSA Board hereby approves the Resolution enjoining all agencies enumerated in Annex BR-03-20230215-01 hereof to provide assistance to PSA and that the assistance include, but not limited to, those identified in said annex and that the agencies shall bear their own cost incurred in relation to the assistance to be provided for CAF.

Approved this 15<sup>th</sup> day of February 2023 in Quezon City.

  
ARSENIO M. BALISACAN, Ph.D.

Secretary  
National Economic and Development Authority  
Chairperson, PSA Board



Attested by:

  
DENNIS S. MAPA, Ph.D.

Undersecretary  
National Statistician and Civil Registrar General  
Philippine Statistics Authority  
Chairperson, PSA Board Secretariat

## 2022 Census of Agriculture and Fisheries

Types of Assistance Requested by Philippine Statistics Authority  
from other Government Agencies

AGENCY	ASSISTANCE
1. Armed Forces of the Philippines (AFP)	<p>1. Issue directive to the agency's regional offices, bureaus, attached agencies, and attached corporations to support the census operations by:</p> <ul style="list-style-type: none"> <li>a. allowing the use of its available land, air, and water transportation vehicles in transporting census materials and personnel and, when necessary, with the corresponding personnel complement, especially in hard-to-reach areas;</li> <li>b. allowing the use of its available rooms/spaces/facilities as training centers/classrooms/accommodation during training/enumeration/processing and/or census headquarters of census supervisors and enumerators;</li> <li>c. allowing the use of available internet connection for the census headquarters and, training centers/classrooms; and/or</li> <li>d. allowing the use of available training equipment such as speakers, microphones, projectors, laptops, and desktops to be used during census trainings;</li> <li>e. issuing advice on areas with security and peace and order concerns;</li> <li>f. providing security escorts to census supervisors and enumerators in critical and far-flung areas;</li> <li>g. providing strategies for dealing with security threats and resolving conflicts during census operations; and</li> <li>h. responding to and/or rescuing census personnel in danger or victim of threat/crime in line of his/her work; and</li> </ul> <p>2. Undertake publicity and information drive among its personnel, stakeholders, and clientele by posting/sharing 2022 Census of Agriculture and Fisheries (CAF) information and publicity materials online through official websites and social media accounts, printing/posting of posters, streamers, and/or standees in office premises, and/or printing/distribution of 2022 CAF brochures and flyers.</p>
2. Civil Service Commission (CSC)	<p>1. Issue directive to the agency's regional offices, bureaus, attached agencies, and attached corporations to support the census operations by:</p>



AGENCY	ASSISTANCE
	<ol style="list-style-type: none"> <li>a. allowing the use of its available rooms/spaces/facilities as training centers/classrooms/accommodation during training/enumeration/processing and/or census headquarters of census supervisors and enumerators;</li> <li>b. allowing the use of available internet connection for the census headquarters and, training centers/classrooms; and/or</li> <li>c. allowing the use of available training equipment such as speakers, microphones, projectors, laptops, and desktops to be used during census trainings; and</li> </ol> <ol style="list-style-type: none"> <li>2. Undertake publicity and information drive among its personnel, stakeholders, and clientele by posting/sharing 2022 CAF information and publicity materials online through official websites and social media accounts, printing/posting of posters, streamers, and/or standees in office premises, and/or printing/distribution of 2022 CAF brochures and flyers.</li> </ol>
3. Commission on Higher Education (CHED)	<ol style="list-style-type: none"> <li>1. Issue directive to the agency's regional offices, bureaus, attached agencies, and attached corporations to support the census operations by:               <ol style="list-style-type: none"> <li>a. allowing the use of its available rooms/spaces/facilities as training centers/classrooms/accommodation during training/enumeration/processing and/or census headquarters of census supervisors and enumerators;</li> <li>b. allowing the use of available internet connection for the census headquarters and, training centers/classrooms; and/or</li> <li>c. allowing the use of available training equipment such as speakers, microphones, projectors, laptops, and desktops to be used during census trainings; and</li> </ol> </li> <li>2. Undertake publicity and information drive among its personnel, stakeholders, and clientele by posting/sharing 2022 CAF information and publicity materials online through official websites and social media accounts, printing/posting of posters, streamers, and/or standees in office premises, and/or printing/distribution of 2022 CAF brochures and flyers.</li> </ol>
4. Department of Agrarian Reform (DAR)	<ol style="list-style-type: none"> <li>1. Provide technical consultation and inputs for the data items to be collected for 2022 CAF including available administrative data to be used as reference for census workload, training, enumeration, and data validation such as:</li> </ol>

AGENCY	ASSISTANCE
	<ul style="list-style-type: none"> <li>a. list of land tenure and implemented comprehensive agrarian reform program; and</li> <li>b. number of agrarian reform beneficiaries (ARBs) by region, province, city/municipality, and barangay;</li> </ul> <p>2. Issue directive to the agency's regional offices, bureaus, attached agencies, and attached corporations to support the census operations by:</p> <ul style="list-style-type: none"> <li>a. allowing the use of its available land, air, and water transportation vehicles in transporting census materials and personnel and, when necessary, with the corresponding personnel complement, especially in hard-to-reach areas;</li> <li>b. allowing the Provincial Agrarian Reform Program Officers (PARPO), City Agrarian Reform Officers (CARO), and Municipal Agrarian Reform Officers (MARO) to serve as resource persons during census trainings;</li> <li>c. allowing the use of its available rooms/spaces/facilities as training centers/classrooms/accommodation during training/enumeration/processing and/or census headquarters of census supervisors and enumerators;</li> <li>d. allowing the use of available internet connection for the census headquarters and, training centers/classrooms; and/or</li> <li>e. allowing the use of available training equipment such as speakers, microphones, projectors, laptops, and desktops to be used during census trainings; and</li> </ul> <p>3. Undertake publicity and information drive among its personnel, stakeholders, and clientele by posting/sharing 2022 CAF information and publicity materials online through official websites and social media accounts, printing/posting of posters, streamers, and/or standees in office premises, and/or printing/distribution of 2022 CAF brochures and flyers.</p>
5. Department of Agriculture (DA)	<p>1. Provide technical consultation and inputs for the data items to be collected for 2022 CAF including available administrative data to be used as reference for census workload, training, enumeration, and data validation such as:</p> <ul style="list-style-type: none"> <li>a. number of registered agri-tourism farms, organic farms, aquaculture farms, municipal/commercial fishing operations/vessels/boats, farmers, fishermen, and fisherfolks by region, province, city/municipality, and barangay;</li> </ul>



AGENCY	ASSISTANCE
	<ul style="list-style-type: none"> <li>b. list of agencies/institutions/cooperatives/associations/ other private organizations with farm/agricultural/ aquaculture/fishing operations;</li> <li>c. list of beneficiaries or accredited farms/cooperatives/ associations/Local Government Units (LGUs) of programs on mechanization and agricultural and fisheries machineries;</li> <li>d. list of crops by sub-classification/classification;</li> <li>e. consolidated data on planting and harvesting seasons by type of crop, and by province/city/municipality;</li> <li>f. updated data on seed rate by type of crops; and</li> <li>g. list of implemented agriculture/fishery programs/ interventions/technical/financial assistance given to household/non-household operators/farmers/fisherfolks;</li> </ul> <p>2. Issue directive to the agency's regional offices, bureaus, attached agencies, and attached corporations to support the census operations by:</p> <ul style="list-style-type: none"> <li>a. allowing the use of its available land, air, and water transportation vehicles in transporting census materials and personnel and, when necessary, with the corresponding personnel complement, especially in hard-to-reach areas;</li> <li>b. allowing personnel especially from Agricultural Training Institute (ATI), Bureau of Animal Industry (BAI), Bureau of Fisheries and Aquatic Resources (BFAR), and Bureau of Plant Industry (BPI) to serve as resource persons during census trainings;</li> <li>c. allowing the use of its available rooms/spaces/ facilities as training centers/classrooms/ accommodation during training/enumeration/ processing and/or census headquarters of census supervisors and enumerators;</li> <li>d. allowing the use of available internet connection for the census headquarters and, training centers/ classrooms; and/or</li> <li>e. allowing the use of available training equipment such as speakers, microphones, projectors, laptops, and desktops to be used during census trainings; and</li> </ul> <p>3. Undertake publicity and information drive among its personnel, stakeholders, and clientele by posting/sharing 2022 CAF information and publicity materials online through official websites and social media accounts, printing/posting of posters, streamers, and/or standees in</p>

AGENCY	ASSISTANCE
	office premises, and/or printing/distribution of 2022 CAF brochures and flyers.
6. Department of Budget and Management (DBM)	<ol style="list-style-type: none"> <li>1. Support budgetary requirements of the 2022 CAF;</li> <li>2. Ensure immediate release of census appropriations; and</li> <li>3. Undertake publicity and information drive among its personnel, stakeholders, and clientele by posting/sharing 2022 CAF information and publicity materials online through official websites and social media accounts, printing/posting of posters, streamers, and/or standees in office premises, and/or printing/distribution of 2022 CAF brochures and flyers.</li> </ol>
7. Department of Environment and Natural Resources (DENR)	<ol style="list-style-type: none"> <li>1. Provide technical consultation and inputs for the data items to be collected for 2022 CAF including latest land cover and cadastral maps and shapefiles nationwide from the National Mapping and Resource Information Authority (NAMRIA) to be used as reference for census workload, training, enumeration, and data validation;</li> <li>2. Issue directive to the agency's regional offices, bureaus, attached agencies, and attached corporations to support the census operations by: <ol style="list-style-type: none"> <li>a. allowing the use of its available land, air, and water transportation vehicles in transporting census materials and personnel and, when necessary, with the corresponding personnel complement, especially in hard-to-reach areas;</li> <li>b. allowing the use of its available rooms/spaces/facilities as training centers/classrooms/accommodation during training/enumeration/processing and/or census headquarters of census supervisors and enumerators;</li> <li>c. allowing the use of available internet connection for the census headquarters and, training centers/classrooms; and/or</li> <li>d. allowing the use of available training equipment such as speakers, microphones, projectors, laptops, and desktops to be used during census trainings;</li> </ol> </li> <li>3. Provide assistance in the resolution of areas with boundary conflicts; and</li> <li>4. Undertake publicity and information drive among its personnel, stakeholders, and clientele by posting/sharing 2022 CAF information and publicity materials online through official websites and social media accounts, printing/posting of posters, streamers, and/or standees in</li> </ol>





AGENCY	ASSISTANCE
	office premises, and/or printing/distribution of 2022 CAF brochures and flyers.
8. Department of Health (DOH)/ BARMM Ministry of Health (MOH)	<ol style="list-style-type: none"> <li>1. Issue directive to the agency's regional offices, bureaus, attached agencies, and attached corporations to support the census operations by:               <ol style="list-style-type: none"> <li>a. providing available first-aid kits and/or free or affordable medical services for census supervisors and enumerators who will be injured/ill during training and enumeration; and</li> <li>b. providing free swab tests/antigen tests to requesting census personnel, if possible; and</li> </ol> </li> <li>2. Undertake publicity and information drive among its personnel, stakeholders, and clientele by posting/sharing 2022 CAF information and publicity materials online through official websites and social media accounts, printing/posting of posters, streamers, and/or standees in office premises, and/or printing/distribution of 2022 CAF brochures and flyers.</li> </ol>
9. Department of Human Settlements and Urban Development (DHSUD)/ BARMM Ministry of Human Settlements and Development (MHSD)	<ol style="list-style-type: none"> <li>1. Issue directive to the agency's regional offices, bureaus, attached agencies, and attached corporations to support the census operations by:               <ol style="list-style-type: none"> <li>a. providing the list and contact persons of gated villages/subdivisions/condominiums by region/province/city/ municipality/barangay;</li> <li>b. issuing advice in enumerating gated villages/subdivisions/condominiums;</li> <li>c. facilitating coordination of PSA census personnel with village/subdivision/condominium authorized administrators;</li> <li>d. allowing the use of its available land, air, and water transportation vehicles in transporting census materials and personnel and, when necessary, with the corresponding personnel complement, especially in hard-to-reach areas;</li> <li>e. allowing the use of its available rooms/spaces/facilities as training centers/classrooms/accommodation during training/enumeration/processing and/or census headquarters of census supervisors and enumerators;</li> <li>f. allowing the use of available internet connection for the census headquarters and, training centers/classrooms; and/or</li> </ol> </li> </ol>



AGENCY	ASSISTANCE
	<p>g. allowing the use of available training equipment such as speakers, microphones, projectors, laptops, and desktops to be used during census trainings; and</p> <p>2. Undertake publicity and information drive among its personnel, stakeholders, and clientele by posting/sharing 2022 CAF information and publicity materials online through official websites and social media accounts, printing/posting of posters, streamers, and/or standees in office premises, and/or printing/distribution of 2022 CAF brochures and flyers.</p>
<p>10. Department of the Interior and Local Government (DILG)/BARMM Ministry of the Interior and Local Government (MILG)</p>	<p>1. Issue directive to Governors and Mayors to convene the Provincial Statistics Committee (PSC)/Census Coordinating Boards (CCBs) and to Association of Barangay Captains (ABC), League of Governors, and League of Mayors, including other local officials to support the census operations;</p> <p>2. Issue directive to Mayors to direct the Municipal Agricultural Officer, Agricultural Technicians and Aquaculturists to participate actively during information dissemination activities and to serve as resource persons in the series of census trainings;</p> <p>3. Issue directive to the agency's regional offices, bureaus, attached agencies, and attached corporations to support the census operations by:</p> <ul style="list-style-type: none"> <li>a. allowing the use of its available land, air, and water transportation vehicles in transporting census materials and personnel and, when necessary, with the corresponding personnel complement, especially in hard-to-reach areas;</li> <li>b. allowing the use of its available rooms/spaces/facilities as training centers/classrooms/accommodation during training/enumeration/processing and/or census headquarters of census supervisors and enumerators;</li> <li>c. allowing the use of available internet connection for the census headquarters and, training centers/classrooms; and/or</li> <li>d. allowing the use of available training equipment such as speakers, microphones, projectors, laptops, and desktops to be used during census trainings;</li> <li>e. issuing advice on areas with security and peace and order concerns;</li> <li>f. providing security escorts to census supervisors and enumerators in critical and far-flung areas;</li> <li>g. providing strategies for dealing with security threats and resolving conflicts during census operations; and</li> </ul>



AGENCY	ASSISTANCE
	<p>h. responding to and/or rescuing census personnel in danger or victim of threat/crime in line of his/her work; and</p> <p>4. Issue directive to local government units (LGUs) to provide available administrative data to be used as reference for census training, enumeration, and data validation such as:</p> <ul style="list-style-type: none"> <li>a. number of farmers, fishermen, and fisherfolks by barangay;</li> <li>b. list of agencies/institutions/cooperatives/associations/other private organizations with farm/agricultural/aquaculture/fishing activities;</li> <li>c. list of beneficiaries or accredited farms/cooperatives/associations/LGUs of programs on mechanization and agricultural and fisheries machineries;</li> <li>d. crop calendar for years 2022 and 2023; and</li> <li>e. list of implemented government interventions/technical assistance given to household/non-household farmers/fisherfolks.</li> </ul>
11. Department of Justice (DOJ)	<ul style="list-style-type: none"> <li>1. Prosecute violators of Republic Act No. 10625 and other statistical acts;</li> <li>2. Provide the latest total number and area size of land granted to agrarian reform beneficiaries by region, province, and city/municipality from the Land Registration Authority (LRA); and</li> <li>3. Undertake publicity and information drive among its personnel, stakeholders, and clientele by posting/sharing 2022 CAF information and publicity materials online through official websites and social media accounts, printing/posting of posters, streamers, and/or standees in office premises, and/or printing/distribution of 2022 CAF brochures and flyers.</li> </ul>
12. Department of Labor and Employment (DOLE)	<ul style="list-style-type: none"> <li>1. Issue directive to the agency's regional offices, bureaus, attached agencies, and attached corporations to support the census operations by: <ul style="list-style-type: none"> <li>a. allowing the use of its available rooms/spaces/facilities as training centers/classrooms/accommodation during training/enumeration/processing and/or census headquarters of census supervisors and enumerators;</li> <li>b. allowing the use of available internet connection for the census headquarters and, training centers/classrooms; and/or</li> </ul> </li> </ul>



AGENCY	ASSISTANCE
	<p>c. allowing the use of available training equipment such as speakers, microphones, projectors, laptops, and desktops to be used during census trainings;</p> <p>2. Provide the list of registered unions/associations of farmers, fishermen, and fisherfolks; and</p> <p>3. Undertake publicity and information drive among its personnel, stakeholders, and clientele by posting/sharing 2022 CAF information and publicity materials online through official websites and social media accounts, printing/posting of posters, streamers, and/or standees in office premises, and/or printing/distribution of 2022 CAF brochures and flyers.</p>
13. Department of National Defense (DND)	<p>1. Issue directive to the agency's regional offices, bureaus, attached agencies, and attached corporations to support the census operations by:</p> <p>a. allowing the use of its available land, air, and water transportation vehicles in transporting census materials and personnel and, when necessary, with the corresponding personnel complement, especially in hard-to-reach areas;</p> <p>b. allowing the use of its available rooms/spaces/facilities as training centers/classrooms/accommodation during training/enumeration/processing and/or census headquarters of census supervisors and enumerators;</p> <p>c. allowing the use of available internet connection for the census headquarters and, training centers/classrooms; and/or</p> <p>d. allowing the use of available training equipment such as speakers, microphones, projectors, laptops, and desktops to be used during census trainings;</p> <p>e. issuing advice on areas with security and peace and order concerns;</p> <p>f. providing security escorts to census supervisors and enumerators in critical and far-flung areas;</p> <p>g. providing strategies for dealing with security threats and resolving conflicts during census operations; and</p> <p>h. responding to and/or rescuing census personnel in danger or victim of threat/crime in line of his/her work; and</p> <p>2. Undertake publicity and information drive among its personnel, stakeholders, and clientele by posting/sharing 2022 CAF information and publicity materials online through official websites and social media accounts, printing/posting of posters, streamers, and/or standees in</p>

AGENCY	ASSISTANCE
14. Department of Transportation (DOTr)	<p>office premises, and/or printing/distribution of 2022 CAF brochures and flyers.</p> <ol style="list-style-type: none"> <li>1. Issue a directive to regional offices, sectoral agencies, and attached agencies to support the census operations by allowing the use of its available land, air, and water transportation vehicles in transporting census materials and personnel and, when necessary, with the corresponding personnel complement, especially in hard-to-reach areas;</li> <li>2. Provide the list of registered commercial fishing vessels from the Maritime Industry Authority (MARINA); and</li> <li>3. Undertake publicity and information drive among its personnel, stakeholders, and clientele by posting/sharing 2022 CAF information and publicity materials online through official websites and social media accounts, printing/posting of posters, streamers, and/or standees in office premises, and/or printing/distribution of 2022 CAF brochures and flyers.</li> </ol>
15. National Commission on Indigenous People (NCIP)/Ministry of Indigenous People Affairs (MIPA)	<ol style="list-style-type: none"> <li>1. Issue directive to the agency's regional offices, bureaus, attached agencies, and attached corporations to support the census operations by: <ol style="list-style-type: none"> <li>a. providing information and list of tribal villages/communities and names of tribal chieftains/leaders;</li> <li>b. facilitating and assisting enumeration in indigenous peoples (IP) communities;</li> <li>c. allowing the use of its available land, air, and water transportation vehicles in transporting census materials and personnel and, when necessary, with the corresponding personnel complement, especially in hard-to-reach areas;</li> <li>d. allowing the use of its available rooms/spaces/facilities as training centers/classrooms/accommodation during training/enumeration/processing and/or census headquarters of census supervisors and enumerators;</li> <li>e. allowing the use of available internet connection for the census headquarters and, training centers/classrooms; and/or</li> <li>f. allowing the use of available training equipment such as speakers, microphones, projectors, laptops, and desktops to be used during census trainings;</li> </ol> </li> <li>2. Undertake publicity and information drive among its personnel, stakeholders, and clientele by posting/sharing 2022 CAF information and publicity materials online</li> </ol>





AGENCY	ASSISTANCE
	through official websites and social media accounts, printing/posting of posters, streamers, and/or standees in office premises, and/or printing/distribution of 2022 CAF brochures and flyers.
16. National Commission of Muslim Filipinos (NCMF)	<ol style="list-style-type: none"> <li>1. Issue directive to the agency's regional offices, bureaus, attached agencies, and attached corporations to support the census operations by:               <ol style="list-style-type: none"> <li>a. facilitating and assisting enumeration in Muslim communities;</li> <li>b. allowing the use of its available land, air, and water transportation vehicles in transporting census materials and personnel and, when necessary, with the corresponding personnel complement, especially in hard-to-reach areas;</li> <li>c. allowing the use of its available rooms/spaces/facilities as training centers/classrooms/accommodation during training/enumeration/processing and/or census headquarters of census supervisors and enumerators;</li> <li>d. allowing the use of available internet connection for the census headquarters and, training centers/classrooms; and/or</li> <li>e. allowing the use of available training equipment such as speakers, microphones, projectors, laptops, and desktops to be used during census trainings;</li> </ol> </li> <li>2. Undertake publicity and information drive among its personnel, stakeholders, and clientele by posting/sharing 2022 CAF information and publicity materials online through official websites and social media accounts, printing/posting of posters, streamers, and/or standees in office premises, and/or printing/distribution of 2022 CAF brochures and flyers.</li> </ol>
17. National Telecommunications Commission (NTC)	<ol style="list-style-type: none"> <li>1. Inform the public about the conduct of 2022 CAF through a nationwide sending of text/SMS blast; and</li> <li>2. Undertake publicity and information drive among its personnel, stakeholders, and clientele by posting/sharing 2022 CAF information and publicity materials online through official websites and social media accounts, printing/posting of posters, streamers, and/or standees in office premises, and/or printing/distribution of 2022 CAF brochures and flyers.</li> </ol>
18. Office of the President	<ol style="list-style-type: none"> <li>1. Direct offices and bureaus under the Office of the President with mandates of providing broadcast and print</li> </ol>

AGENCY	ASSISTANCE
	<p>media information to assist in the public campaign (e.g., radio/TV plugs); and</p> <p>2. Schedule the recording of TV ad and radio plug with the President.</p>
19. Philippine Health Insurance Corporation (PhilHealth)	<p>1. Provide affordable insurance for hired Enumerators, Team Supervisors, Assistant Census Area Supervisors, and Census Area Supervisors to cover the duration of census operations; and</p> <p>2. Undertake publicity and information drive among its personnel, stakeholders, and clientele by posting/sharing 2022 CAF information and publicity materials online through official websites and social media accounts, printing/posting of posters, streamers, and/or standees in office premises, and/or printing/distribution of 2022 CAF brochures and flyers.</p>
20. Philippine Information Agency (PIA)	<p>1. Undertake publicity and information drive by:</p> <ol style="list-style-type: none"> <li>posting/sharing 2022 CAF information and publicity materials online through official websites and social media accounts, printing/posting of posters, streamers, and/or standees in office premises, and/or printing/distribution of 2022 CAF brochures and flyers; and</li> <li>development of radio/television plugs and print ads.</li> </ol>
21. Philippine National Police (PNP)	<p>1. Issue directive to the agency's regional offices, bureaus, attached agencies, and attached corporations to support the census operations by:</p> <ol style="list-style-type: none"> <li>allowing the use of its available land, air, and water transportation vehicles in transporting census materials and personnel and, when necessary, with the corresponding personnel complement, especially in hard-to-reach areas;</li> <li>issuing advice on areas with security and peace and order concerns;</li> <li>providing security escorts to census supervisors and enumerators in critical and far-flung areas;</li> <li>providing strategies for dealing with security threats and resolving conflicts during census operations; and</li> <li>responding to and/or rescuing census personnel in danger or victim of threat/crime in line of his/her work; and</li> </ol> <p>2. Undertake publicity and information drive among its personnel, stakeholders, and clientele by posting/sharing 2022 CAF information and publicity materials online through official websites and social media accounts,</p>



AGENCY	ASSISTANCE
	printing/posting of posters, streamers, and/or standees in office premises, and/or printing/distribution of 2022 CAF brochures and flyers.
22. Public Attorney's Office (PAO)	<ol style="list-style-type: none"> <li>1. Issue a directive to regional and city/municipal offices to support the census operations by providing free notarization of Contract of Service to all requesting hired census personnel as stated under RA 9406; and</li> <li>2. Undertake publicity and information drive among its personnel, stakeholders, and clientele by posting/sharing 2022 CAF information and publicity materials online through official websites and social media accounts, printing/posting of posters, streamers, and/or standees in office premises, and/or printing/distribution of 2022 CAF brochures and flyers.</li> </ol>
23. All Other Government Agencies	<ol style="list-style-type: none"> <li>1. Issue directive to the agency's regional offices, bureaus, attached agencies, and attached corporations to support the census operations by:               <ol style="list-style-type: none"> <li>a. allowing the use of its available land, air, and water transportation vehicles in transporting census materials and personnel and, when necessary, with the corresponding personnel complement, especially in hard-to-reach areas;</li> <li>b. allowing the use of its available rooms/spaces/facilities as training centers/ classrooms/ accommodation during training/enumeration/ processing and/or census headquarters of census supervisors and enumerators;</li> <li>c. allowing the use of available internet connection for the census headquarters and, training centers/ classrooms; and/or</li> <li>d. allowing the use of available training equipment such as speakers, microphones, projectors, laptops, and desktops to be used during census trainings; and</li> </ol> </li> <li>2. Undertake publicity and information drive among its personnel, stakeholders, and clientele by posting/sharing 2022 CAF information and publicity materials online through official websites and social media accounts, printing/posting of posters, streamers, and/or standees in office premises, and/or printing/distribution of 2022 CAF brochures and flyers.</li> </ol>

