



SPECIAL RELEASE

GENERAL RETAIL PRICE INDEX (GRPI) IN THE NATIONAL CAPITAL REGION (2012=100)

FEBRUARY 2020

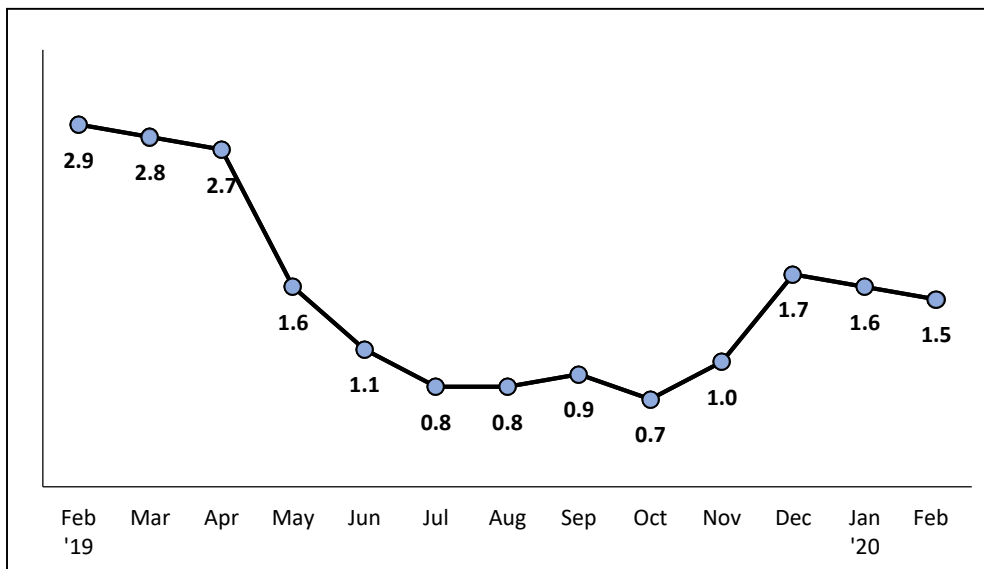
Date of Release:

Reference No. 2020-

**Table A. Year-on-Year Changes of GRPI for All Items, in Percent
 (2012=100)**

February 2020	January 2020	February 2019	Year-to-Date
1.5	1.6	2.9	1.6

**Figure 1. Annual Growth Rates of GRPI for All Items, in Percent
 February 2019 – February 2020
 (2012=100)**



Management System
 ISO 9001:2015
 www.tuv.com
 ID 9108640991



Annual rate of increase of GRPI in the National Capital Region (NCR) slows down further during the month

The annual rate of increment of GRPI in NCR decelerated to 1.5 percent in February 2020. In the previous month, its annual change was recorded at 1.6 percent and in February 2019, 2.9 percent. (Table A and Table 2)

Slower annual mark-ups were registered in the indices of mineral fuels, lubricants and related materials at 0.3 percent; and miscellaneous manufactured articles, 1.0 percent.

On the other hand, annual hikes were higher in the following commodity groups:

- Beverages and tobacco, 3.8 percent;
- Crude materials, inedible except fuels, 1.5 percent;
- Chemicals, including animal and vegetable oils and fats, 1.0 percent; and
- Manufactured goods classified chiefly by materials, 1.5 percent.

The indices of food, and machinery and transport equipment retained their previous month's annual growth rates of 2.1 percent and 0.5 percent, respectively. (Table 2)



ROSALINDA P. BAUTISTA

Assistant Secretary

Deputy National Statistician

Sectoral Statistics Office