

SPECIAL RELEASE

General Wholesale Price Index (GWPI) (2012=100)

April 2020

Date of Release: 21 August 2020

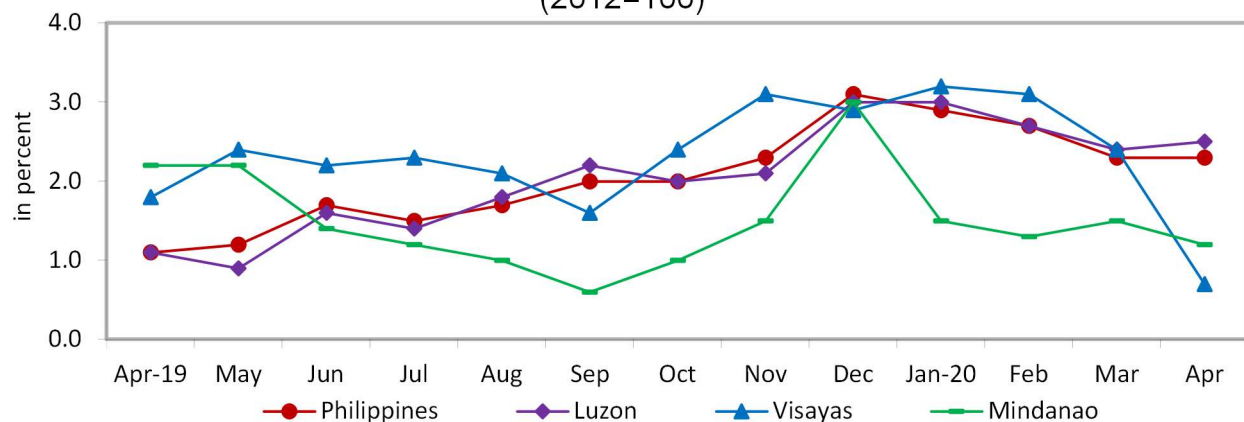
Reference No. 2020-230

Table A. Year-on-Year Growth Rates of the GWPI by Area, All Items
in Percent
(2012=100)

Area	April 2020	March 2020	April 2019	Year-to-Date
Philippines	2.3	2.3	1.1	2.5
Luzon	2.5	2.4	1.1	2.6
Visayas	0.7	2.4	1.8	2.3
Mindanao	1.2	1.5	2.2	1.4

Source: Survey of Wholesale Prices of Selected Commodities for the GWPI, Philippine Statistics Authority

Figure 1. Growth Rates of the GWPI by Area, All Items
April 2019 - April 2020
(2012=100)



Source: Survey of Wholesale Prices of Selected Commodities for the GWPI, Philippine Statistics Authority

1. Annual rate of GWPI at the national level remains at 2.3 percent

The GWPI at the country level in April 2020 retained its previous month's annual rate of 2.3 percent. In April 2019, its annual rate was registered at 1.1 percent. (Table A and Table 2)

Annual mark-up in the food index was higher at 4.2 percent during the month.

On the other hand, annual increases slowed down in the indices of beverages and tobacco at 6.3 percent; crude materials, inedible except fuels, 13.6 percent; and machinery and transport equipment, 1.2 percent. Moreover, annual declines were recorded in the indices of mineral fuels, lubricants and related materials at 15.4 percent; chemicals including animal and vegetable oils and fats, 1.3 percent; and miscellaneous manufactured articles, 0.1 percent.

Annual movement in manufactured goods classified chiefly by materials index remained at 3.4 percent during the month. (Table 2)

2. GWPI in Luzon picks up in April 2020

On an annual basis, GWPI in Luzon went up at a faster pace of 2.5 percent in April 2020. In the previous month, its annual rate was recorded at 2.4 percent and in April 2019 at 1.1 percent. (Table A and Table 2)

Compared with its annual rate in March 2020, annual increment was higher in the food index at 4.8 percent.

Meanwhile, annual increases were slower in the indices of beverages and tobacco at 5.9 percent; crude materials, inedible except fuels, 13.9 percent; and machinery and transport equipment, 1.3 percent. In addition, annual decreases were registered in the indices of mineral fuels, lubricants and related materials at 16.3 percent; chemicals including animal and vegetable oils and fats, 1.6 percent; and miscellaneous manufactured articles, 0.02 percent.

The index of manufactured goods classified chiefly by materials retained its previous month's annual rate of 3.7percent. (Table 2)

3. GWPI in Visayas moves up at a slower pace in April 2020

The GWPI in Visayas eased further at an annual rate of 0.7 percent in April 2020. In the previous month, its annual change was 2.4 percent and in April 2019, 1.8 percent. (Table A and Table 2)

Annual declines were still observed in the indices of mineral fuels, lubricants and related materials at 9.7 percent; and in manufactured goods classified chiefly by materials at 0.01 percent. Contributing also to the downtrend in the overall GWPI in the area were the deceleration in the annual increases posted in the indices of food at 0.4 percent; and in chemicals including animal and vegetable oils and fats at 1.7 percent.

On the other hand, the index of crude materials, inedible except fuels moved up faster at an annual rate of 10.9 percent. Moreover, from an annual decline in the previous month, miscellaneous manufactured articles index inched up by 0.003 percent. The previous month's annual growth rates were still observed in the indices of beverages and tobacco at 11.7 percent; and in machinery and transport equipment at 0.3 percent. (Table 2)

4. Annual rate of increase of GWPI in Mindanao slows down

The GWPI in Mindanao slowed down at an annual rate of 1.2 percent in April 2020. Its annual rate in March 2020 was noted at 1.5 percent and in April 2019, 2.2 percent. (Table A and Table 2)

On an annual basis, decreases were still recorded in the indices of mineral fuels, lubricants and related materials at 6.7 percent; chemicals including animal and vegetable oils and fats, 0.7 percent; and miscellaneous manufactured articles, 0.6 percent. Compared with their annual growth rates in the previous month, annual hikes were slower in the indices of food at 1.5 percent; and beverages and tobacco, 5.4 percent.

Meanwhile, the previous month's annual growth rates were still observed in the indices of crude materials, inedible except fuels at 14.5 percent; manufactured goods classified chiefly by materials, 1.8 percent; and machinery and transport equipment, 0.6 percent. (Table 2)



DENNIS S. MAPA, Ph.D.

Undersecretary

National Statistician and Civil Registrar General