



# SPECIAL RELEASE

## Construction Materials Retail Price Index (CMRPI) in the National Capital Region (NCR) (2012=100)

**July 2022**

Date of Release: 23 September 2022

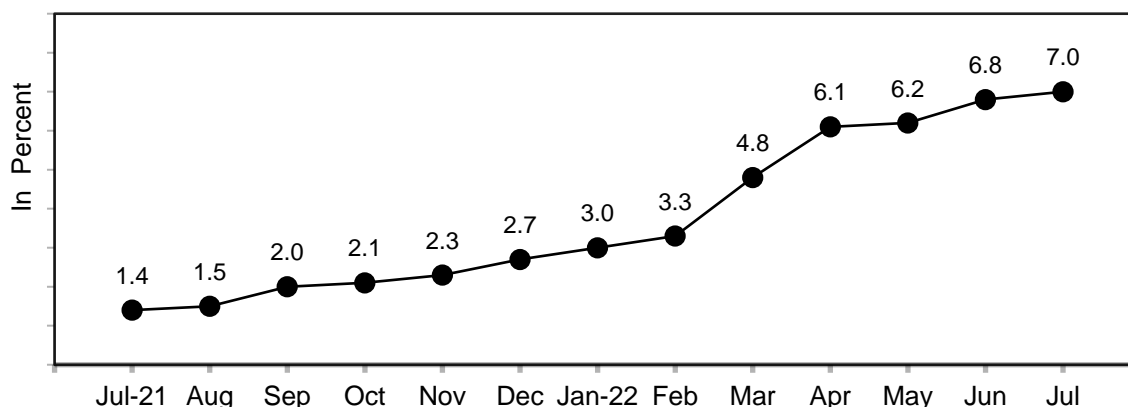
Reference No. 2022-389

**Table A. Year-on-Year Growth Rates of the CMRPI in NCR, All Items  
 In Percent  
 (2012=100)**

July 2021	June 2022	July 2022	Year-to-Date
1.4	6.8	7.0	5.4

Source: Retail Price Survey of Selected Commodities for the Generation of Construction Materials Retail Price Index, Philippine Statistics Authority

**Figure 1. Growth Rates of the CMRPI in NCR, All Items  
 July 2021 – July 2022  
 (2012=100)**



Source: Retail Price Survey of Selected Commodities for the Generation of Construction Materials Retail Price Index, Philippine Statistics Authority



## **CMRPI in NCR continues to increase in July 2022**

The annual increment of CMRPI increased further to 7.0 percent in July 2022, from its previous month's annual rate of 6.8 percent. This is the highest recorded annual growth rate of the index since January 2009. In July 2021, its annual growth rate was lower at 1.4 percent. (Tables A and 2)

The uptrend of CMRPI in NCR was primarily due to higher mark-up in the painting materials and related compounds index, at 5.7 percent; carpentry materials, at 3.2 percent; and masonry materials, at 4.4 percent.

On the other hand, relative to their previous month's annual increases, lower annual hikes were noted in the indices of the following commodity groups during the month:

- a. Electrical materials, 4.4 percent;
- b. Plumbing materials, 8.1 percent;
- c. Tinsmithry materials, 9.3 percent;
- d. Miscellaneous construction materials, at 9.8 percent. (Table 2)

**DENNIS S. MAPA, Ph.D.**

Undersecretary

National Statistician and Civil Registrar General

*DGLDP/SCDG/GGP*