



# SPECIAL RELEASE

## Construction Materials Retail Price Index (CMRPI) in the National Capital Region (NCR) (2012=100)

**March 2022**

Date of Release: 24 June 2022

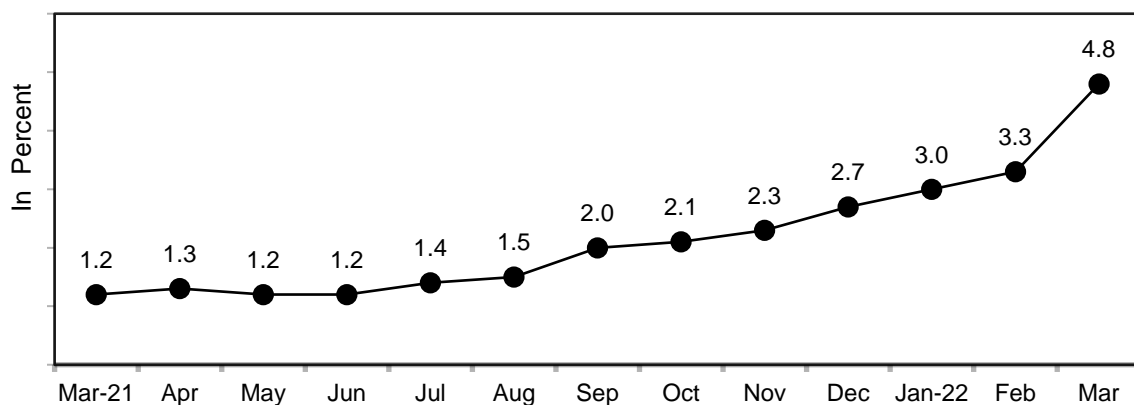
Reference No. 2022-248

**Table A. Year-on-Year Growth Rates of the CMRPI in NCR, All Items  
 In Percent  
 (2012=100)**

March 2021	February 2022	March 2022	Year-to-Date
1.2	3.3	4.8	3.7

Source: Retail Price Survey of Selected Commodities for the Generation of Construction Materials Retail Price Index, Philippine Statistics Authority

**Figure 1. Growth Rates of the CMRPI in NCR, All Items  
 March 2021 – March 2022  
 (2012=100)**



Source: Retail Price Survey of Selected Commodities for the Generation of Construction Materials Retail Price Index, Philippine Statistics Authority



## **CMRPI in NCR went up at a faster pace in March 2022**

The annual growth rate of CMRPI in NCR continued its uptrend as it moved up further to 4.8 percent in March 2022, from 3.3 percent in the previous month. Its annual growth rate in March 2021 was notably lower at 1.2 percent. (Tables A and 2)

Relative to their annual growth rates in February 2022, all commodity groups registered higher annual change during the month. Among the commodity groups, the following registered the highest annual increments:

- a. Electrical Materials, 3.6 percent;
- b. Plumbing materials, 6.9 percent;
- c. Tinsmithry materials, 7.3 percent; and
- d. Miscellaneous construction materials, 6.7 percent. (Table 2)

**DENNIS S. MAPA, Ph.D.**

Undersecretary

National Statistician and Civil Registrar General