

SPECIAL RELEASE

Construction Materials Retail Price Index (CMRPI) in the National Capital Region (NCR) (2012=100)

May 2022

Date of Release: 29 July 2022

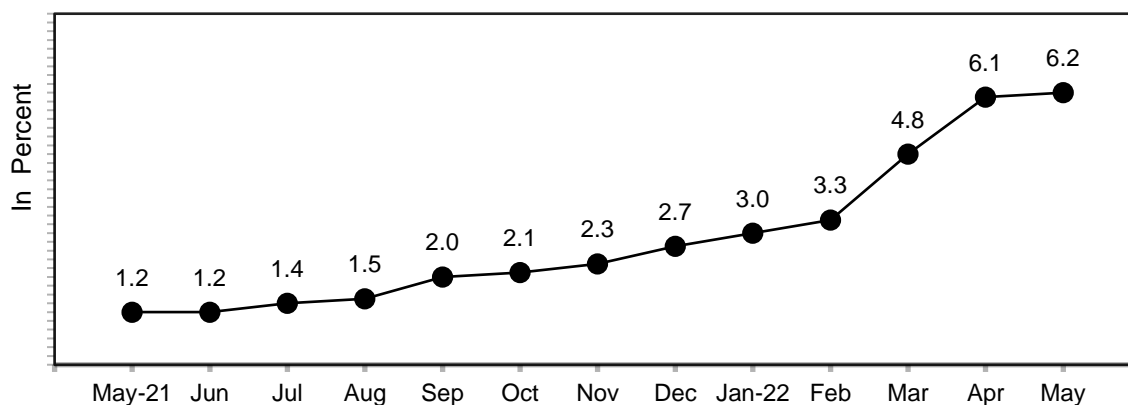
Reference No. 2022-310

**Table A. Year-on-Year Growth Rates of the CMRPI in NCR, All Items
In Percent
(2012=100)**

May 2021	April 2022	May 2022	Year-to-Date
1.2	6.1	6.2	4.7

Source: Retail Price Survey of Selected Commodities for the Generation of Construction Materials Retail Price Index, Philippine Statistics Authority

**Figure 1. Growth Rates of the CMRPI in NCR, All Items
May 2021 – May 2022
(2012=100)**



Source: Retail Price Survey of Selected Commodities for the Generation of Construction Materials Retail Price Index, Philippine Statistics Authority

CMRPI in NCR continues to increase in May 2022

The annual growth rate of CMRPI picked up further to 6.2 percent in May 2022, from 6.1 percent in April 2022. This was the highest annual increment of the index since January 2009. In May 2021, its annual hike was lower at 1.2 percent. (Tables A and 2)

The uptrend was primarily influenced by the higher annual increase in the index for carpentry materials at 2.1 percent in May 2022, from 1.5 percent in the previous month. In addition, annual increments were also higher in the indices of the following commodity groups:

- a. Masonry materials, 3.9 percent;
- b. Painting materials and related compounds, 4.1 percent; and
- c. Tinsmithry materials, 8.3 percent.

On the other hand, annual uptick in the miscellaneous construction materials index decelerated to 10.2 percent in May 2022, from 10.6 percent in April 2022. The indices for electrical materials and plumbing materials retained their previous month's rates of 4.0 percent and 7.9 percent, respectively.

DENNIS S. MAPA, Ph.D.

Undersecretary

National Statistician and Civil Registrar General