

SPECIAL RELEASE

Construction Materials Retail Price Index (CMRPI) in the National Capital Region (NCR) (2012=100)

November 2022

Date of Release: 09 January 2023

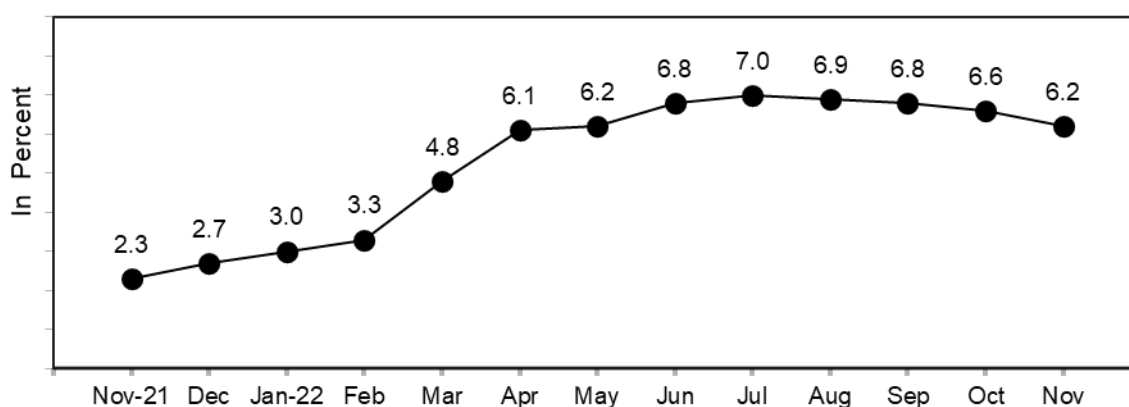
Reference No. 2022-532

**Table A. Year-on-Year Growth Rates of the CMRPI in NCR, All Items
In Percent
(2012=100)**

November 2021	October 2022	November 2022	Year-to-Date
2.3	6.6	6.2	5.9

Source: Retail Price Survey of Selected Commodities for the Generation of Construction Materials Retail Price Index, Philippine Statistics Authority

**Figure 1. Growth Rates of the CMRPI in NCR, All Items
November 2021 – November 2022
(2012=100)**



Source: Retail Price Survey of Selected Commodities for the Generation of Construction Materials Retail Price Index, Philippine Statistics Authority

CMRPI in NCR posted lower year-on-year growth in November 2022

The annual increment of CMRPI in NCR continued to move downward as it slowed down to 6.2 percent in November 2022, from 6.6 percent in October 2022. This brings the average growth rate of the index from January to November 2022 to 5.9 percent. In November 2021, its year-on-year change stood at 2.3 percent. (Tables A and 2)

The slower year-on-year hike of the CMRPI was primarily due to the lower annual changes in the indices of plumbing materials at 5.5 percent, from 6.5 percent in October 2022; and miscellaneous construction materials at 10.1 percent, from 11.1 percent in October 2022. In addition, lower annual upticks were noted in the indices of the following commodity groups:

- a. Carpentry materials, 3.1 percent;
- b. Electrical materials, 3.7 percent; and
- c. Painting materials and related compounds, 5.4 percent.

On the other hand, higher annual increment was noted in the index of tinsmithry materials at 8.2 percent, from 7.7 percent in October 2022.

Meanwhile, the index of masonry materials retained its previous month's annual growth rate. (Table 2)

DENNIS S. MAPA, Ph.D.

Undersecretary

National Statistician and Civil Registrar General

DGLDP/SCDG/GGP